

WOODCRAFT

105 Baldwinville Rd, Winchendon, MA 01475
(978) 297-2977

Ducati V2 Rearset Instruction Sheet – Racing Use Only

Thank you for selecting Woodcraft rearsets. The components you have just purchased for your motorcycle are designed to improve the ground clearance, crash worthiness and overall good looks of your motorcycle. Please note that these components are intended and approved for **racing use only**.

- 1) Remove stock rearsets, footpegs and associated hardware. All components that are re-used in this kit should be cleaned and inspected for damage before re-installation.

IMPORTANT

Tighten all fasteners to factory specification or industry standard. FAILURE TO PROPERLY TIGHTEN ALL FASTENERS MAY CAUSE DAMAGE TO THE MOTORCYCLE, LOSS OF CONTROL AND SERIOUS INJURY OR DEATH

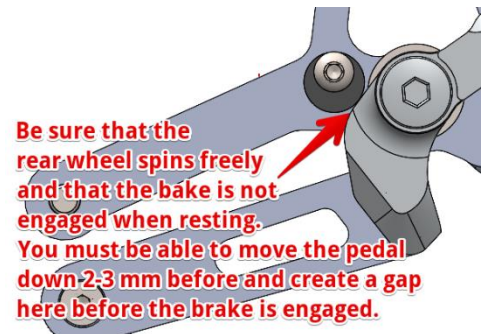
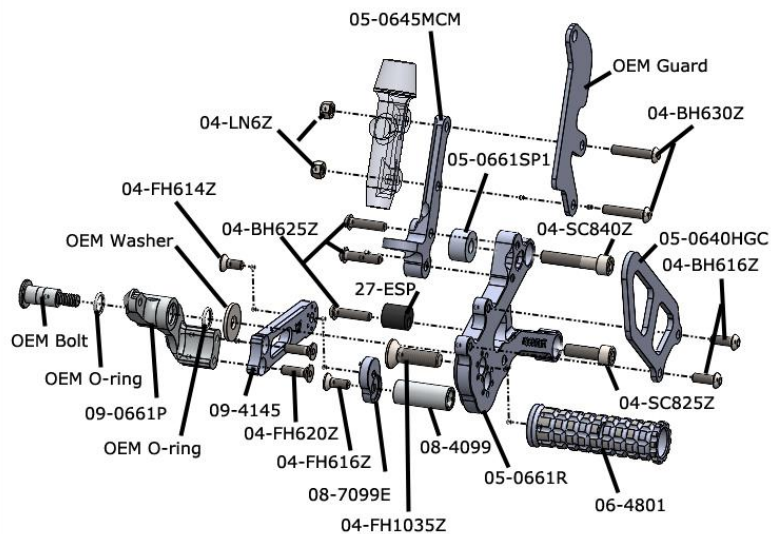
Brake Side Assembly Installation

IMPORTANT: Use **Blue Loctite** on all bolts for final assembly.

- 1) Assemble the brake pedal before installation. Bolt the brake pedal to the back side of the bracket using the OEM hardware, o-rings and washer. Be sure to use quality waterproof grease on the sliding surface of the shouldered bolt.

The eccentric toe piece will be set after you choose the footpeg location.

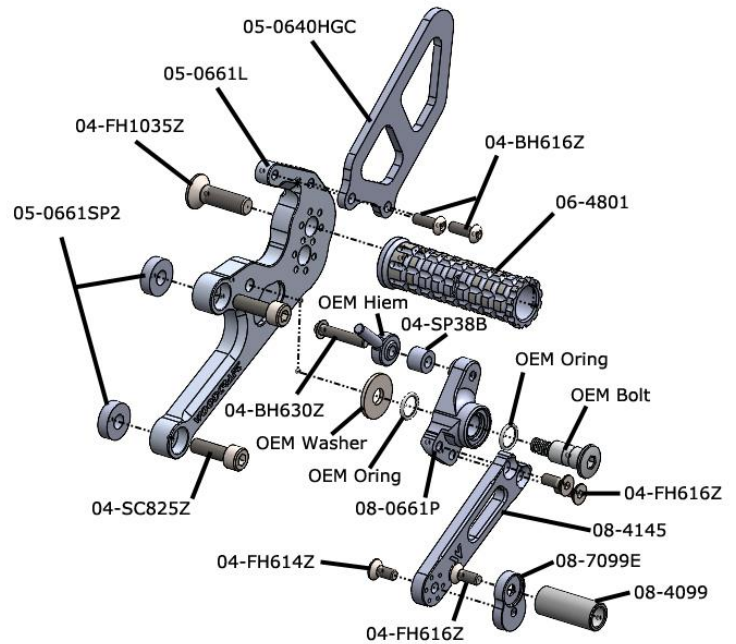
- 2) Attach the 05-0645MCM bracket to the 05-0661R main bracket using the 6x25mm button head bolts
- 3) Remove the OEM brake plunger and spring from the OEM brake pedal. Attach these parts to the Woodcraft pedal, orienting them exactly the same as they were on the stock brackets.
- 4) Bolt the footpeg to the bracket using the included 10mm hardware. Note that the footpeg has a 6-position eccentric adjustment and that the pegs on both sides of the motorcycle must be placed in the same location. Test different peg locations until you find a comfortable position.
- 5) Bolt the OEM master cylinder to the bracket using the supplied bolts and nuts. The bolts pass through the plastic OEM guard, then the 05-0645MCM and finally the master cylinder. The 6mm nuts secure the bolts from the back side.
- 6) Install the 27-ESP eccentric brake stop spacer. **IMPORTANT:** Ensure that there is at least a few millimeters of motion in the brake pedal before the plunger engages the master cylinder. There must be zero brake pressure when the pedal is not being depressed. Orient the spacer so the brake pedal pushes it in the clockwise direction.
- 7) Bolt the bracket to the frame using the supplied hardware, with the 05-061SP1 spacer between the frame and the bracket at the top hole. The top holes uses the 8x40mm bolt, and the bottom hole uses the 8x25mm bolt.
- 8) Make position adjustments to the location eccentric toe piece for rider comfort and then torque the bolts to secure the eccentric plate and toe peg in place.
- 9) Install the heel guard using the 6x16mm button head bolts.



Shifter Side Assembly Installation

IMPORTANT: Use **Blue Loctite** on all bolts for final assembly.

- 1) Assemble the shift pedal and bolt the shift pedal assembly to the bracket using the OEM shouldered bolt, o-rings and washer. Be sure to use a high quality waterproof grease on the shouldered surface of the OEM bolt. The pedal tip adjustment is adjusted in the final step.
- 2) Attach the footpeg to the bracket, using the same hole and eccentric location selected on the brake side.
- 3) Bolt the bracket to the frame using the supplied hardware, placing the spacers between the frame and the rearset bracket.
- 4) Attach the heel guard to the bracket using the supplied 6x16 button head bolts.
- 5) Thread the shift rod simultaneously onto the hiem joints for the Woodcraft shift pedal and the arm on the engine. A good starting point is about 6 turns. Using a combination of the shift rod and the eccentric pedal tip adjustments, find the pedal height that is most comfortable for you.
- 6) **For GP Shift** – orient the arm on the engine in the position shown at the right. For ideal shifting action the shift rod should be roughly 90 degrees to the arm on the engine and the top arm of the shift lever.
- 7) Once the pedal position is finalized, lock the rod in place with jam nuts on both sides of the rod and secure the toe peg / toe peg eccentric in place.



BE SURE THAT ALL COMPONENTS OPERATE AND RETURN FREELY BEFORE USE

If you have any questions regarding installation, please feel free to contact us.

IMPORTANT

Installation and use of this product will change the response of the motorcycle to rider control inputs. Failure of the rider to adapt to these changes may result in a loss of control, and serious injury or death. Improper installation and/or failure to comply with all warnings and instructions may cause a loss of control and serious injury or death. DO NOT INSTALL OR USE THIS PRODUCT IF YOU ARE UNABLE TO DO SO IN COMPLIANCE WITH ALL INSTRUCTIONS AND WARNINGS. SEEK THE ASSISTANCE OF A TRAINED PROFESSIONAL TECHNICIAN. Installation of this product releases the Woodcraft Technologies, Inc. from all liabilities as to the use of this product. The user recognizes that any alteration or modification to any motorcycle may increase the risk of injury or accident and may also render the motorcycle illegal for public road use