

WOODCRAFT CFMOTORSPORTS

105 Baldwinville Rd
Winchendon, MA 01475
(978)297-2977
www.woodcraft-cfm.com

Kawasaki ZX-6R (19+) Rearset Instruction Sheet – Racing Use Only

Thank you for selecting CFMOTORSPORTS rearsets. The components you have just purchased for your motorcycle are designed to improve the ground clearance, crash worthiness and overall good looks of your motorcycle. Please note that these components are intended and approved for **racing use only**. As such, the footpegs are solid-mount and provisions for brake light switches and brake pedal return springs are generally not provided.

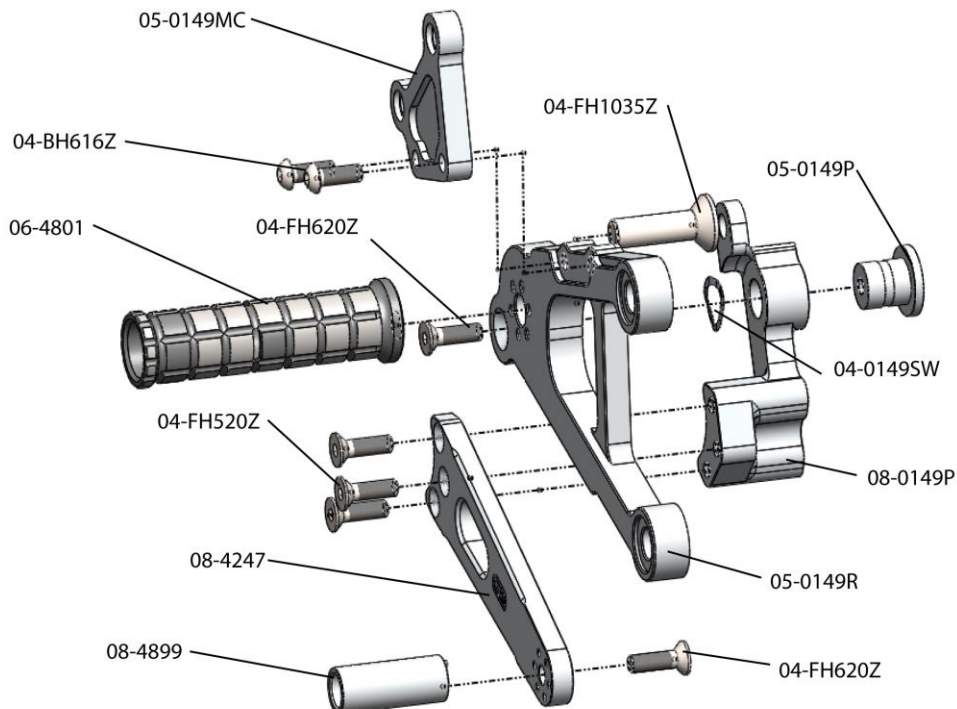
- 1) Remove stock rearsets, footpegs and associated hardware. All components that are re-used in this kit should be cleaned and inspected for damage before re-installation.

IMPORTANT

Tighten all fasteners to factory specification or industry standard. FAILURE TO PROPERLY TIGHTEN ALL FASTENERS MAY CAUSE DAMAGE TO THE MOTORCYCLE, LOSS OF CONTROL AND SERIOUS INJURY OR DEATH

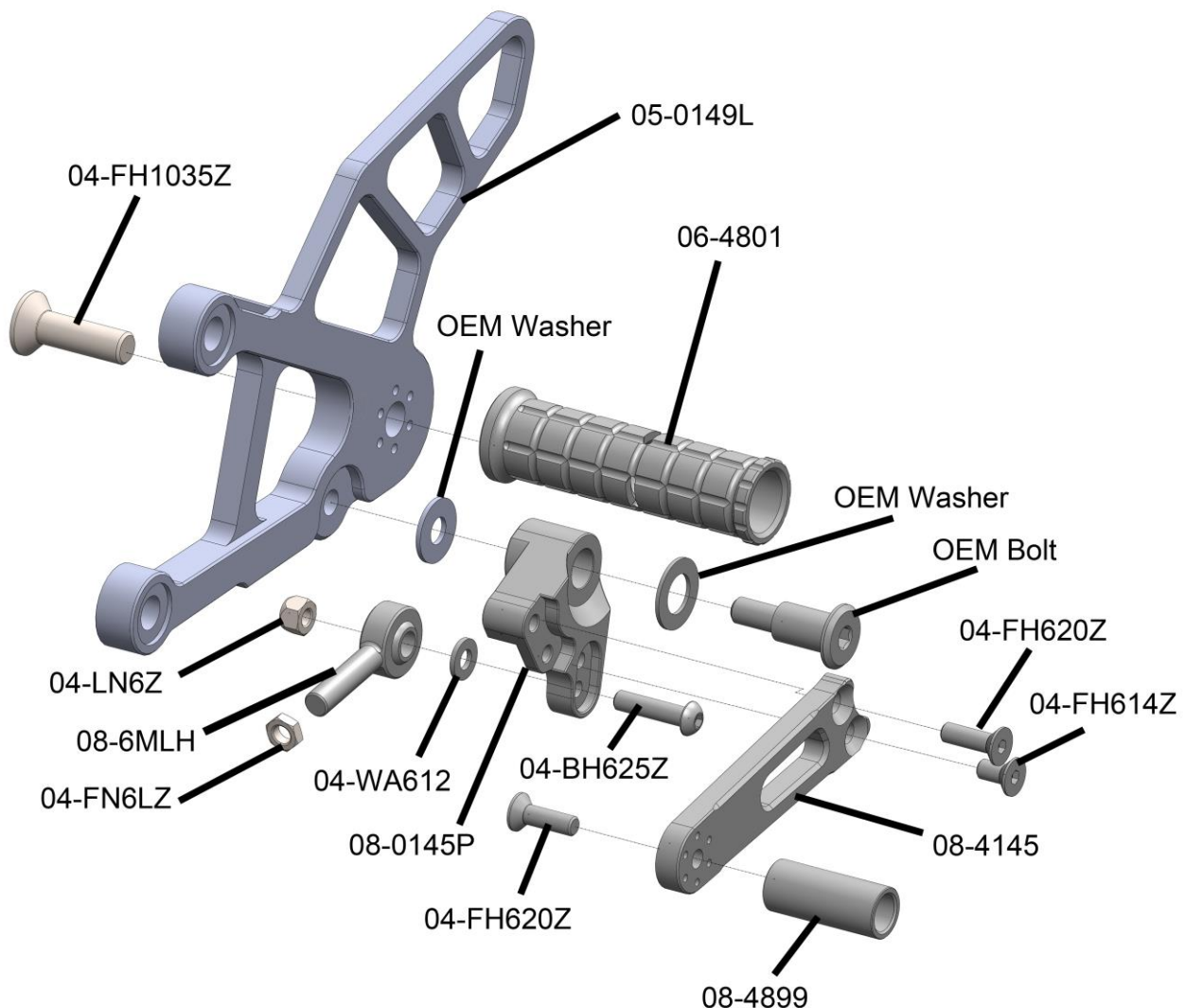
Brake Side Assembly Installation

- 1) Assemble the CFM brake pedal using a Threadlocking Compound on all bolts.
- 2) Install the supplied brake pin & CFM brake pedal to the back side of the rearset bracket with the 6 x 20mm flat head countersunk bolt. Threadlocking Compound. The wave washer is placed between the bracket and the pedal. Be sure to generously apply quality waterproof grease to the sliding surface of the pin to ensure smooth lever operation.
- 3) Bolt the CFM footpeg to the bracket using the included 10mm hardware. **IMPORTANT** - Secure bolt with Threadlocking Compound. Rotate the eccentric to the desired foot position – be sure to put both pegs in the same location.
- 4) Bolt the brake bracket assembly to the frame using the OEM 8mm hardware. **IMPORTANT** - Secure bolts with Threadlocking Compound.
- 5) Bolt the master cylinder bracket to the outside of the main bracket using the included 6 x 16mm button head bolts. **IMPORTANT** - Secure bolts with Threadlocking Compound.
- 6) Bolt the master cylinder to the inside of the bracket using the OEM hardware. The OEM heel guard may be used. **NOTE: Woodcraft has an optional billet heel guard part# 09-0149HGB.** Secure the bottom of the master cylinder to the CFM brake pedal using the OEM hardware.



Shifter Side Assembly Installation

- 1) Bolt the CFM footpeg to the bracket using the included 10mm hardware. **IMPORTANT** - Secure bolt with Threadlocking Compound. Rotate the eccentric to the desired foot position – be sure to put both pegs in the same location.
- 2) If you are using the OEM pedal, please skip to step 3. If you purchased a CFM shift pedal with your rearsets, remove the pedal assembly from the package. Assemble the CFM brake pedal using a Threadlocking compound on all bolts except the tip, this will be done in step 4. Bolt the heim joint to the pedal (we recommend the lower hole for racing).
- 3) Attach the OEM or CFM shift lever to the bracket using the OEM hardware. Be sure to generously apply quality waterproof grease to the sliding surface of the bolt to ensure smooth lever operation. **IMPORTANT** - Secure bolt with Threadlocking Compound.
- 4) Bolt the shift bracket assembly to the frame using the OEM hardware. **IMPORTANT** - Secure bolts with Threadlocking Compound. For CFM pedals, adjust the lever tip to the position where the distance from the peg to the lever tip is most comfortable and then secure the tip with Threadlocking Compound.
- 5) Install the CFM shift rod 07-2310 (use locknuts from the OEM rod) to adjust pedal height and lock in place.
- 6) For GP Shift pattern flip the gear change actuator approximately 180 degrees. After installing the bolt on the actuator, pull it all the way to the outside of the shaft before tightening. **Note: the OEM quickshifter will not work in GP shift orientation. In order to have GP-quick shifting, you need to order an aftermarket “PULL” type quickshifter. Alternatively, Woodcraft does have an optional kit (Rearset kit 05-0151GP) that will work with the OEM shifter.**



BE SURE THAT ALL COMPONENTS OPERATE AND RETURN FREELY BEFORE USE

If you have any questions regarding installation, please feel free to contact us.

IMPORTANT

Installation and use of this product will change the response of the motorcycle to rider control inputs. Failure of the rider to adapt to these changes may result in a loss of control, and serious injury or death. Improper installation and/or failure to comply with all warnings and instructions may cause a loss of control and serious injury or death. DO NOT INSTALL OR USE THIS PRODUCT IF YOU ARE UNABLE TO DO SO IN COMPLIANCE WITH ALL INSTRUCTIONS AND WARNINGS. SEEK THE ASSISTANCE OF A TRAINED PROFESSIONAL TECHNICIAN.