



700 S. Hathaway St. Unit E
Banning, CA. 92220
web: <http://www.imsproducts.com>
Orders/Information: (951) 653-7720

HONDA 3.2g Tank

Fits TRX250X ('87-'92)
TRX300EX ('93-'06)

IMS TANK ID #: TRX-3
IMS Part #122223/222223

IMS PARTS LIST

- (1) Fuel Tank
 - *(1) Gas Cap 322100-BLK)
 - *(1) Seal for Cap, Pre-Installed (322101)
 - (*Excluded on Dry-Break*)
- (1) Front Tank Mounting Bracket (BRK-IMS-6263)
- (1) Right Tank Mounting Bracket (BRK-IMS-6205)
- (1) Left Tank Mounting Bracket (BRK-IMS-6223)
- (6) 6x12 Hex Head Bolt (MTP-9338106012)
- (2) 6x12 Flat Head Bolt (MTP-7991106012)
- (1) Bulkhead Petcock Bracket (BRK-IMS-BH-1)
- (1) ½" Petcock Coupling (BRK-HONPETADAPT)
- (1) Rubber O-Ring (MCM-9452K185)

OEM ITEMS TO USE

- Petcock & Bolts
- All Tank Mounting Hardware

WARNING!

Clean Tank Interior Thoroughly Before Installation. Install This Fuel Tank ONLY In a Well Ventilated Area, As Gasoline Fumes Are EXTREMELY Dangerous. DO NOT START OR OPERATE THE VEHICLE IF THERE ARE ANY FUEL LEAKS! IMS Recommends That Installation Be Done By a Licensed Mechanic. Read All Instructions First Before Beginning Installation.

TANK REMOVAL

Drain all fuel from OEM fuel tank into a government approved fuel container with a greater capacity than fuel tank on vehicle.

The seat / rear fender assembly & tank shrouds need to be removed. The front fender / shroud assembly does not need to be removed only the one around the gas cap & the one below it.

Remove the two-rear tank mounting bolts. Lift the tank slightly & disconnect the fuel line. The tank can be removed by carefully holding the shroud apart & lifting the tank up & back. Carefully remove the two-rubber tank mounting grommets, bushings & bolts; they will be used on the IMS tank.

Remove the stock petcock from the tank.

TANK INSTALLATION

Assemble the petcock according to illustration. Place the coupling through the mounting plate; make sure that the flat side of the coupling aligns with the flat side of the opening in the plate. Place the O-ring into the groove of the coupling & place the entire assembly onto the IMS tank & tighten using the provided (2) flat head bolts firmly. **NOTE: The plate may not fit completely flush to the tank surface due to the shape of the tank, but make sure that the O-ring & coupling are properly seated & there should be a good seal.** Once the coupling assembly is installed correctly, thread the OEM petcock onto the coupling and tighten firmly by hand.

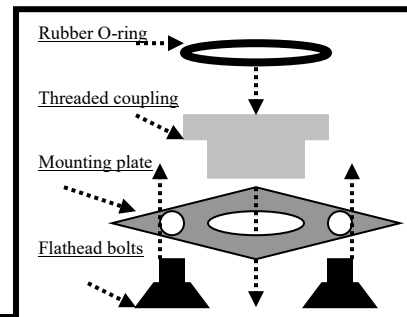
Transfer over the OEM grommet and OEM bushing from your stock setup onto the 2 Rear Mounting Brackets provided by IMS. Install these brackets onto the IMS tank and tighten the rear brackets to the frame first then tighten the brackets to the tank.

Install the IMS front tank-mounting bracket onto the tank with the arrow portion or the open end facing forward. Tighten these bolts firmly. **DO NOT TIGHTEN OVER 7 foot-pounds or 50-inch pounds of torque.**

To install the IMS tank carefully spread the tank shroud & push the tank forward making sure the front bracket is engaged properly. Lift the tank slightly & reconnect the fuel line, then push the tank all the way forward until the rear brackets align with their holes. Make sure the tank is seated properly.

DO NOT TIGHTEN OVER 7 foot-pounds or 50-inch pounds of torque.

Turn the petcock to the closed position. Attach the seat and fill you new IMS fuel tank, check for any leaks & enjoy your longer ride!



“FOR COMPETITION USE ONLY”

“Legal in California ONLY for racing vehicles which may never be used upon a highway.”

DISCLAIMER:

Due to uncontrolled variables in the manufacturing process of rotationally molded fuel tanks, the fuel tank may vary in size and shape by up to 7% of the manufacturer's original listed capacity

