



700 S. Hathaway St., Unit E  
Banning, CA. 92220  
Web: <http://www.imsproducts.com>  
Orders: (800) 237-9906  
Information: (951) 653-7720  
FAX: (951) 653-1060

## KAWASAKI FUEL TANK

3.1 GALLON

**IMS Tank ID: KX-28**

**Fits KX125 (03-05)**

**KX250 (03-04)**

**IMS Part #:**  
**113137 & 213137**

### PARTS LIST

- (1) Fuel Tank
- (1) Gas Cap-322100-BLK\*
- (1) SEAL-322101\*
- (\*Excluded on Dry-Break\*)
- (1) Petcock Gasket (#322141)
- (2) L Brackets/w Cover (BRK-KX-20-24)
- (2) 1/2" Clear PVC-Pcs. (MCM-5233K69)
- (2) 6x12 Flange (MTP-6999106012)
- (2) 6x25 Washers (MTP-9028106025)
- (2) 1/2in. Plastic Spacer (MCM-9225A145)

### STOCK ITEMS TO USE

- Petcock & screws
- Seat mount hardware
- Radiator shrouds

## WARNING!

Prior to installation clean IMS tank interior thoroughly  
Install this fuel tank **ONLY** in a well ventilated area, as gasoline fumes are **EXTREMELY** dangerous. **DO NOT START OR OPERATE THE VEHICLE IF THERE ARE ANY FUEL LEAKS!**  
IMS recommends installation be performed by a licensed mechanic.  
Improper installation may lead to Severe Bodily Injury or Death.  
Prior to installation read all instructions.

## TANK REMOVAL

Drain all fuel from OEM fuel tank into a government approved fuel container with a greater capacity than fuel tank on vehicle.

Remove the seat, fuel line, radiator shrouds & tank. Remove the petcock from the OEM tank.

## TANK INSTALLATION

Install the stock petcock into the **IMS** tank using the OEM petcock gasket & bolts. Tighten snugly, but **DO NOT** over tighten.

Place the IMS tank onto the motorcycle, making sure that it doesn't bind & rests on the frame rails.

Insert the supplied 6x12mm bolts through the **IMS** L-brackets & thread them loosely into the stock mounts on the frame.

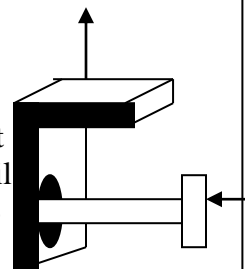
While pushing the brackets firmly up against the frame rails, tighten them firmly (see illustration below).

Install 1/2" spacer

Between the radiator and  
The radiator shroud using  
The 6 x 30mm bolt with the  
O.D. flat washer. Use the  
Same procedure for the  
Other side.

Attach the OEM  
Fuel line, radiator shrouds  
& Seat. Fill tank with fuel.  
Make sure there isn't any  
Leaks & enjoy your longer  
Ride!

Push bracket up against  
Bottom of the frame rail  
While fastening to IMS  
Tank.



### "FOR COMPETITION USE ONLY"

"Legal in California **ONLY** for racing vehicles which may never be used upon a highway."

### DISCLAIMER:

Due to uncontrolled variables in the manufacturing process of rotationally molded fuel tanks, the fuel tank may vary in size and shape by up to 7% of the manufacturer's original listed capacity