



PERFORMANCE MACHINE LIMITED WARRANTY INFORMATION

Performance Machine warrants to the original purchaser that the parts to be free of manufacturing defects in materials and workmanship for a period of one (1) year from the date of purchase. In the event warranty service is required, you must call Performance Machine immediately with a description of the problem.

If it is deemed necessary for Performance Machine to make an evaluation to determine whether the part is defective, a return authorization number will be given by Performance Machine. The parts must be packaged properly so as to not cause further damage and returned prepaid to Performance Machine with a copy of the original invoice of purchase and a detailed letter outlining the nature of the problem. If after evaluation by Performance Machine the part was found to be defective it will be repaired or replaced at no cost to you. If we replace it, we may replace it with a reconditioned one of the same design. Performance Machine shall not be held liable for any consequential or incidental damages resulting from the failure of a Performance Machine part. Performance Machine shall have no obligation if a part becomes defective as a result of improper installation or abuse.

IMPORTANT NOTICE

Before installing, read through these instructions completely; this will familiarize you with the way in which the parts fit together and the tools needed to complete the job.

This product involves alterations to your motorcycle and may void your factory warranty. PM STRONGLY recommends this installation be done by an experienced motorcycle mechanic.

DISCLAIMER

These Performance Machine parts are designed for high performance motorcycle applications and are intended for the very experienced rider only. The installation of these Performance Machine parts may adversely effect or void your factory warranty.

For questions pertaining to the installation of this product, please contact our technical department at 1-800-479-4037

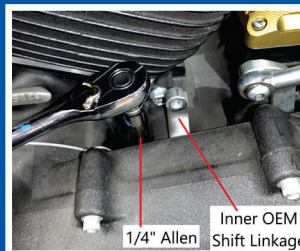
1. Turn off your motorcycle and place securely on a lift or motorcycle jack.

SHIFT SIDE INSTALLATION

2. Remove your current floorboard or peg components along with the levers and brake and shift linkages. Set those aside, they will not be reused.
3. Remove the 4x 1/4-20 SHCS marked below from the primary housing. Set those aside they will not be reused.

Softail models that come stock with a shift shaft through the primary will require a plug kit (sold separately)

1. Remove the inner shift linkage located behind the primary. Use a long 1/4" allen to reach the screw. A mirror may be required to help locate the bolt head.
2. Once bolt is removed the shift shaft can be removed to the outside of the bike.
3. Place the supplied O-Ring onto the plug kit and install from the outside of the primary cover. The PM shift side mount bracket will hold the pin in place after completing the installation.



4. Mount the PM left side mid control bracket using the 4 included 1/4-20 SHCS and spacers.
Torque to 100 in-lb
NOTE: Use medium strength thread locking compound
5. Assemble the shift linkage by securing it to the shift arm using the supplied hardware. Adjust the linkage to change the toe peg position. Verify the linkage does not bind and has full range of motion when shifting.
NOTE: Use medium strength thread locking compound

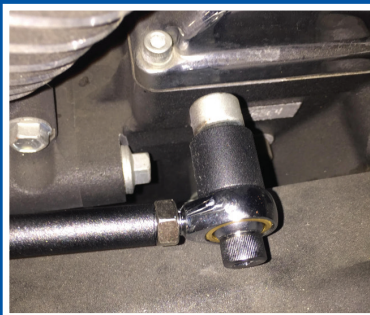




TWIN CAM ONLY

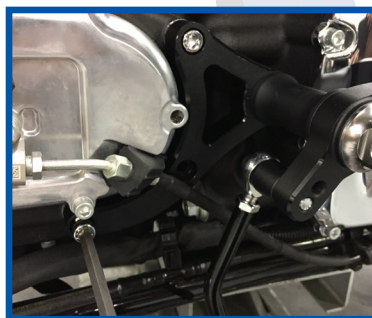
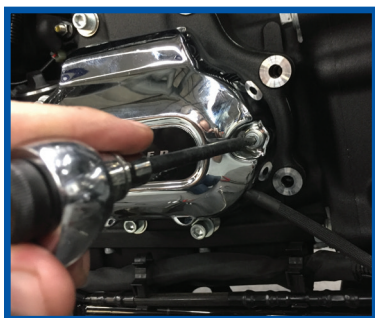
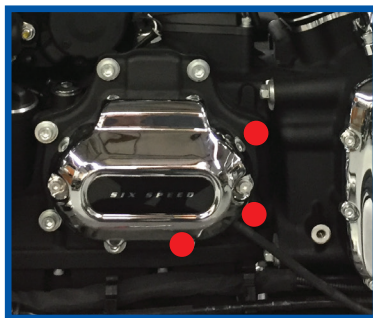
Install the supplied spacer between the transmission shift arm and shift linkage.

NOTE: Use medium strength thread locking compound



BRAKE SIDE INSTALLATION

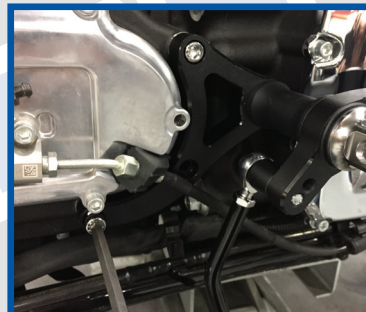
6. Remove the 3x 5/16-18 SHCS on the transmission service door. Set those aside they will not be reused
NOTE: Some models may require the removal of the clutch slave cover to access all the transmission trap door bolts.



7. Remove the nut and washer holding the brake pedal in place along with the pin attaching it to the brakemaster cylinder. These will be reused during the reinstallation of components. A new cotter pin is recommend.



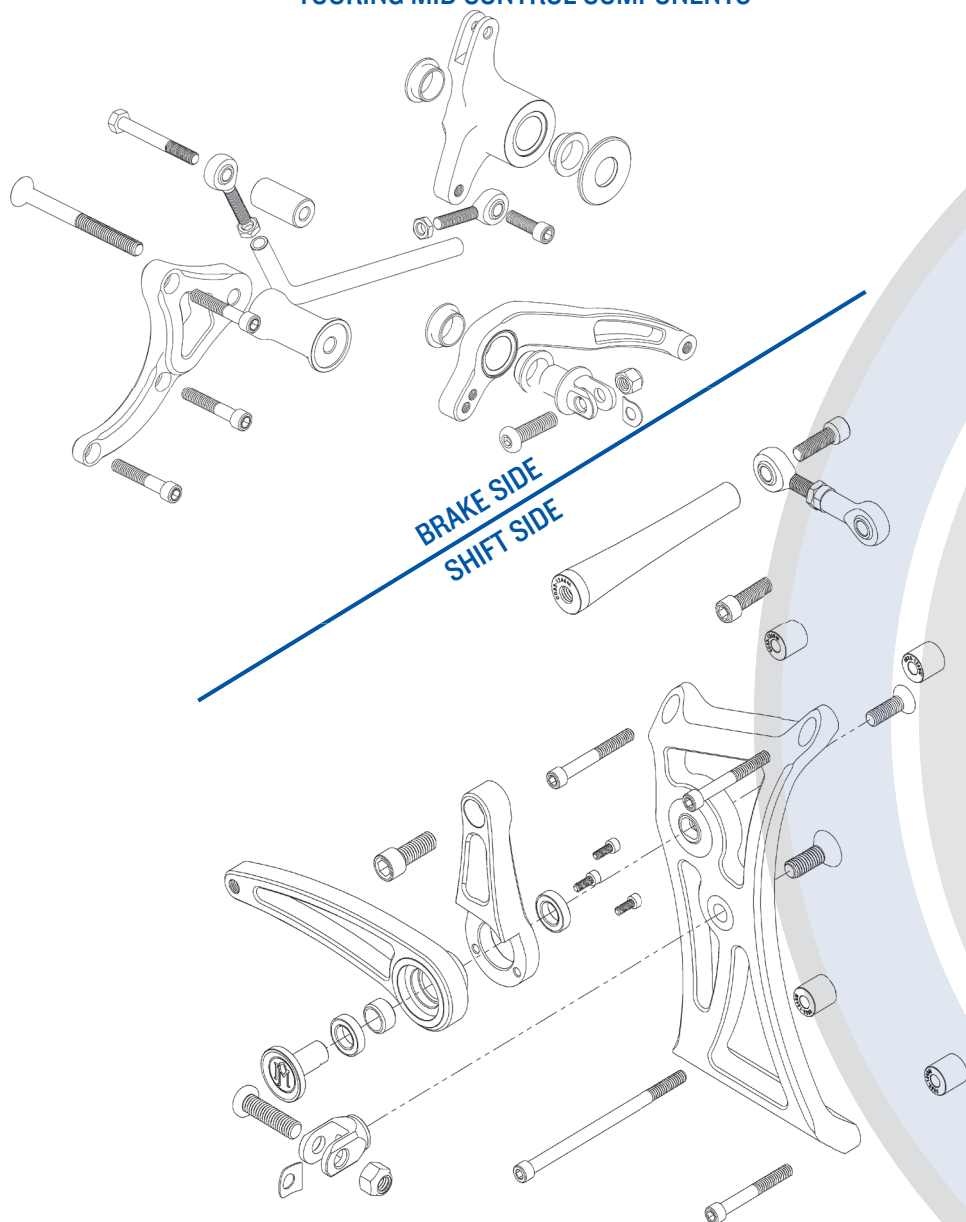
8. Mount the PM right side mid control bracket using the 3 included 5/16-18 SHCS and spacers. Torque to 14 ft-lb NOTE: Use medium strength thread locking compound
9. Install the PM mid control brake arm pivot on the brake arm shaft. Reuse the original washer, nut and pin.
10. Install the brake side linkage and adjust the lever to the desired position. Be sure the pedal has full range of motion and is not binding.



11. Use the supplied hardware to install footpegs and toe pegs of your choice to the mid controls.
12. Reinstall removed components and hit the road!



TOURING MID CONTROL COMPONENTS



SOFTAIL MID CONTROL COMPONENTS

