

# WOODCRAFT CFMOTORSPORTS

105 Baldwinville Rd. Winchendon, MA 01475  
(978)297-2977

## **IMPORTANT**

Tighten all fasteners to factory specification or industry standard. FAILURE TO PROPERLY TIGHTEN ALL FASTENERS MAY CAUSE DAMAGE TO THE MOTORCYCLE, LOSS OF CONTROL AND SERIOUS INJURY OR DEATH

### **Suzuki GSX8S/R GP Shift Rearset Instruction Sheet – Racing Use Only**

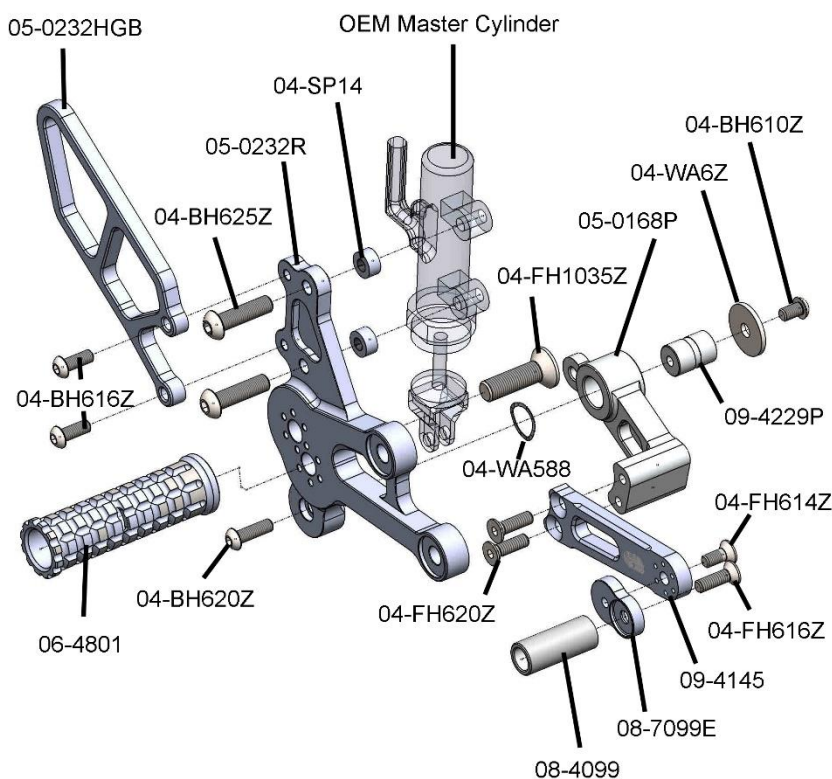
Thank you for selecting CFMOTORSPORTS rearsets. Please note that these components are intended and approved for **racing use only**. As such, the footpegs are solid-mount and pedal return springs are not provided. If desired, this kit uses a Woodcraft 09-7125 brake return spring.

- 1) Remove stock rearsets, footpegs and associated hardware. All components that are re-used in this kit should be cleaned and inspected for damage before re-installation.

**Important: ALL bolts in this assembly must be secured with BLUE threadlocking compound**

### **Brake Side Assembly Installation**

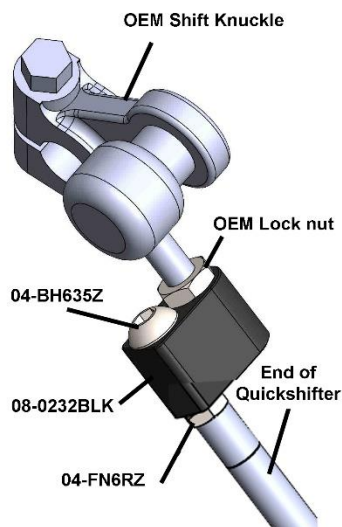
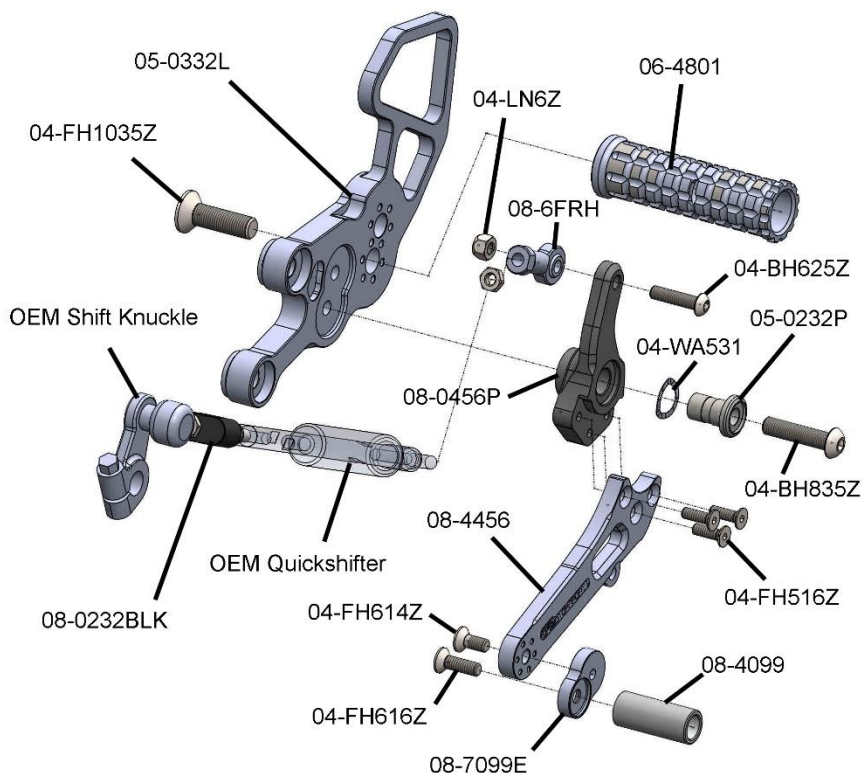
- 1) Bolt the CFM footpeg to the bracket using the included **10x35mm** hardware. Rotate the eccentric to the desired foot position for ground clearance and comfort. We recommend starting with the lower hole and the peg pin in the 10 o'clock position.
- 2) Assemble the CFM brake pedal. The toe peg eccentric will be adjusted in step 6
- 3) Install the brake pivot pin 09-4229P to the back side of the bracket using the 6x20mm bolt.
- 4) Install the brake pedal to the back side of the bracket using the hardware shown at the right. Install the wave washer against the bracket and secure the pedal with the 6mm bolt and washer. Be sure to generously apply quality waterproof grease to the sliding surface of the pivot pin to ensure smooth lever operation.
- 5) Bolt the master cylinder and in place using the included **6x25mm** BH hardware, placing the spacers between the bracket and the master cylinder. Attach the master cylinder clevis to the brake pedal using the OEM hardware.
- 6) Adjust lever height as desired using a combination of the master cylinder clevis and the eccentric toe peg.
- 7) Bolt the main brackets to the frame using the OEM hardware.
- 8) Bolt the heel guard to the bracket using the supplied 6x16mm hardware.



## Shift Side Assembly Installation

**Important: ALL bolts in this assembly must be secured with BLUE threadlocking compound**

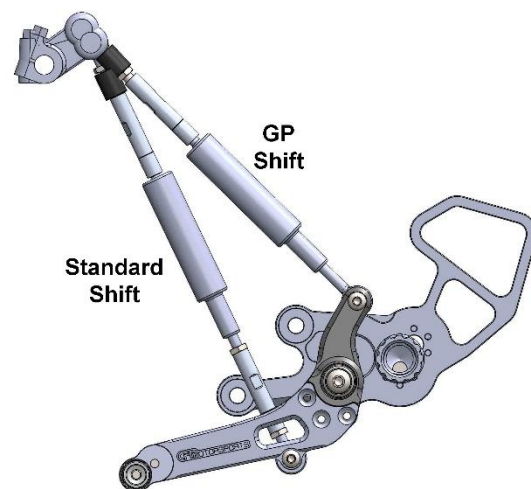
- 1) Bolt the footpeg to the bracket using the included **10x35mm** FH hardware.
- 2) Assemble the CFM shift pedal using a threadlocking compound on all bolts except the tip (completed in step 7). Bolt the 8mm heim joint to the pedal using the included hardware.
- 3) Secure the CFM lever to the bracket using the supplied **8x35mm** bolt, pivot pin and wave washer. Be sure to generously apply quality waterproof grease to the sliding surface of the pin to ensure smooth lever operation.
- 4) Bolt the shift bracket assembly to the frame with the **OEM** bolts.
- 5) Remove the stock shift knuckle from the OEM shift arm (the splined piece on the shaft) and position it so that it is about 90 degrees to the shift rod. Install the 08-0232BLK by fully threading it on the heim joint and locking it in place with the jam nut. Thread the 6x35mm bolt through the other hole and lock it in place with the nut.



- 6) Completely thread the OEM quickshifter into the 6x35mm bolt from step 5 and lock it in place against the nut. Thread the bottom of the quickshifter into the female heim joint on the shift pedal.

**IMPORTANT** - the shift rod should make roughly a 90 degree angle with the upper shift arm.

- 7) Adjust the lever tip and shift rod to the position that is most comfortable and then secure the tip with threadlocking compound. Be sure to lock the quickshifter in place using a lock nut.



**BE SURE THAT ALL COMPONENTS OPERATE PROPERLY AND RETURN FREELY BEFORE USE.**

If you have any questions regarding installation, please feel free to contact us.

**IMPORTANT** Installation and use of this product will change the response of the motorcycle to rider control inputs. Failure of the rider to adapt to these changes may result in a loss of control, and serious injury or death. Improper installation and/or failure to comply with all warnings and instructions may cause a loss of control and serious injury or death. **DO NOT INSTALL OR USE THIS PRODUCT IF YOU ARE UNABLE TO DO SO IN COMPLIANCE WITH ALL INSTRUCTIONS AND WARNINGS. SEEK THE ASSISTANCE OF A PROFESSIONAL TECHNICIAN.**