



Thank you for purchasing our product. Before installing/operating the product, read the instructions carefully and retain them for future reference.

⚠ Attention!

- For installation, follow the steps described. Any damage caused by wrong installation shall be imputed to the users.
- Do not disassemble or change any parts. Opening and dissassembling this unit will void any warranty.
- Maintenance and repairs should be executed by our professionals only.

NOTE

⚠ Some procedures must be followed to avoid damages to the product.

⚠ **WARNING!** Certain procedure must be followed to avoid damages to yourself, to the vehicle or to others.

1-1 Accessories

1 Intake manifold X1

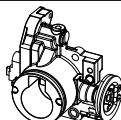


1-2 Optional Accessories

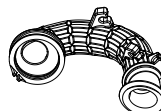
1 CYLINDER



2 THROTTLE BODY



3 CONNECTING TUBE



4 AIR FILTER COVER

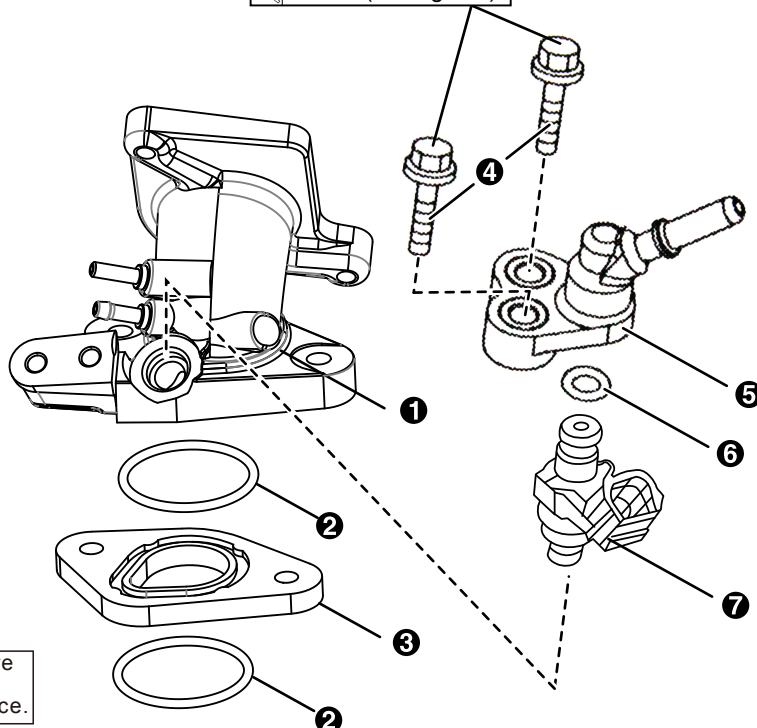


5 AIR FILTER



2 INSTALLATION INSTRUCTIONS

12 Nm (120 kgf.cm)

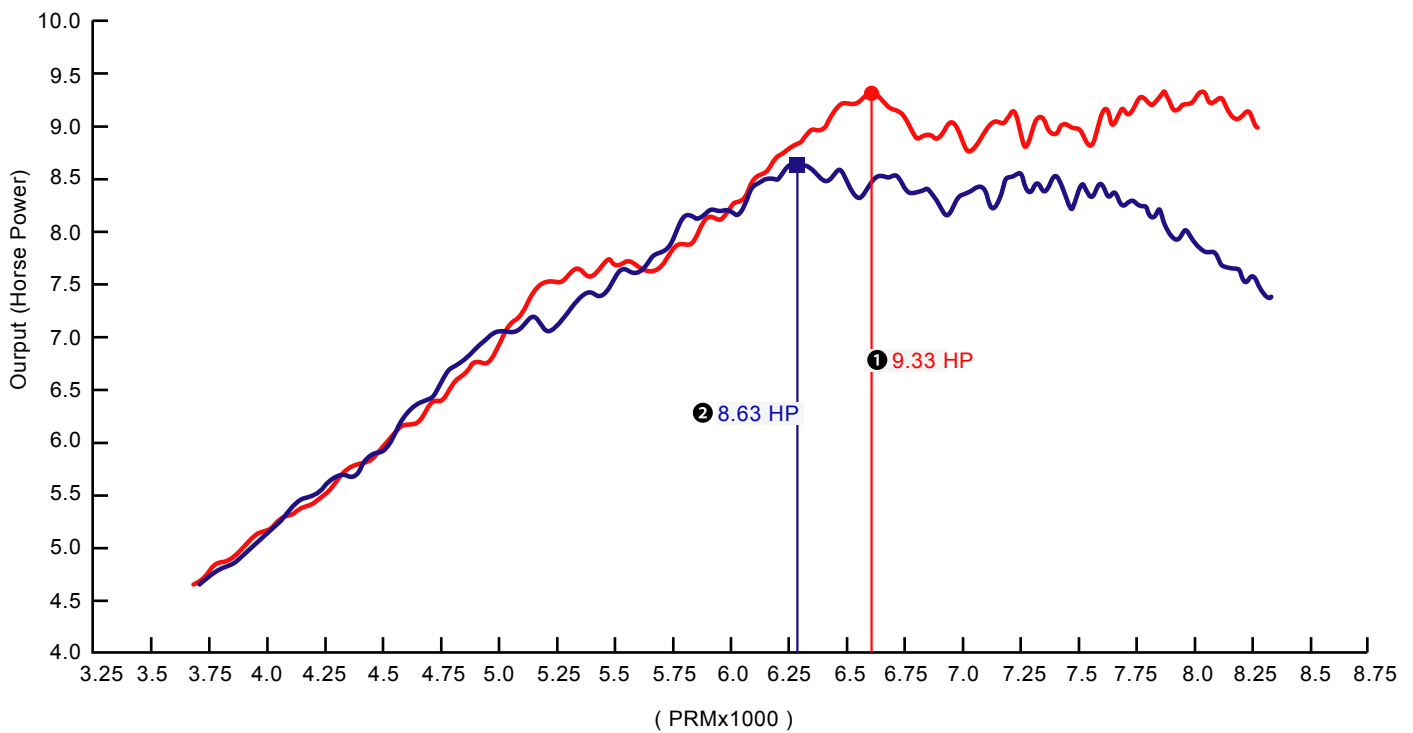
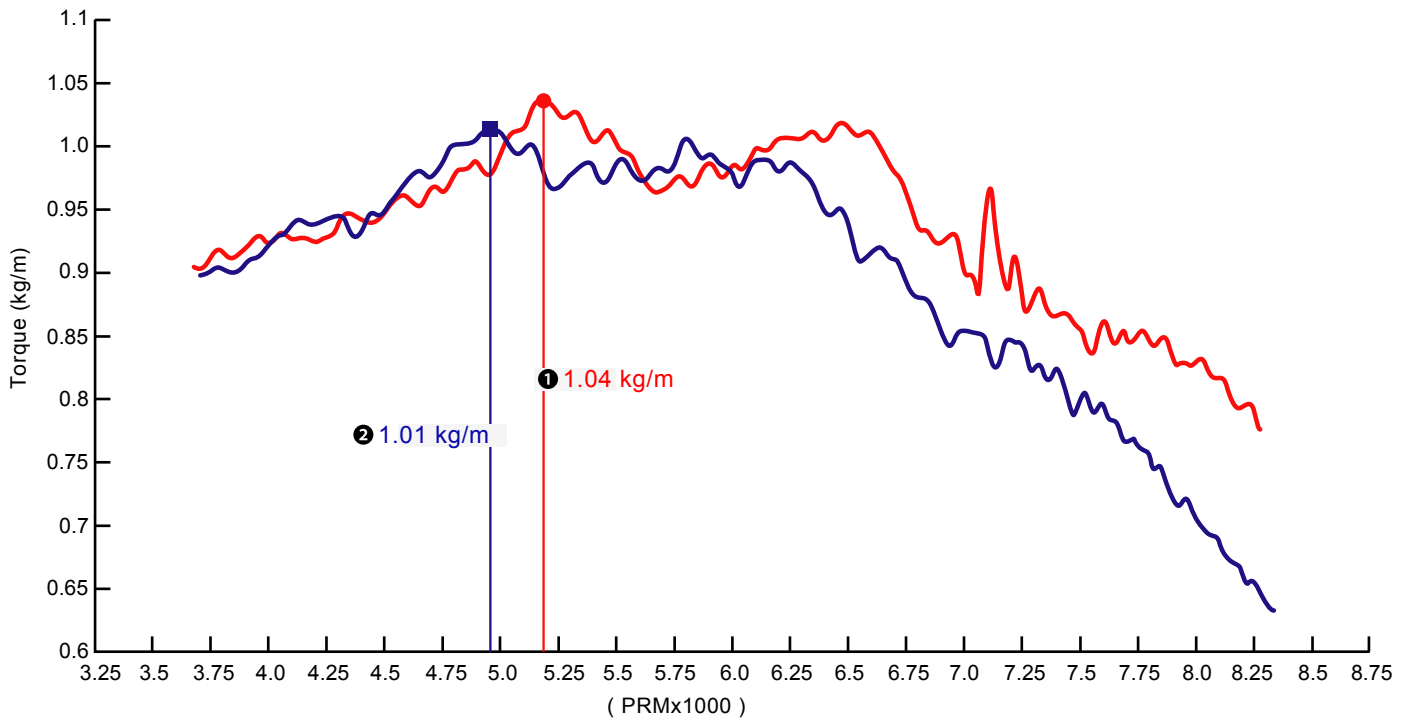


Proceed as follows

- 1 Intake manifold
- 2 STD Intake manifold sealing O-ring
- 3 STD Intake manifold spacer
- 4 Screw
- 5 Injector adapter
- 6 Spacer
- 7 Injector

NOTE Proceed according to the drawing in order. Make sure to disassemble the parts in reverse order. Refer to the above picture for the installation sequence.

3 DYNO TEST CHART



NOTE ① KOSO Intake+KOSO Throttle body+KOSO Air cleaner box connection tube+KOSO Air filter cover

NOTE ② STD

NOTE Test results vary with testing environment and weather. This test chart is for reference only.