

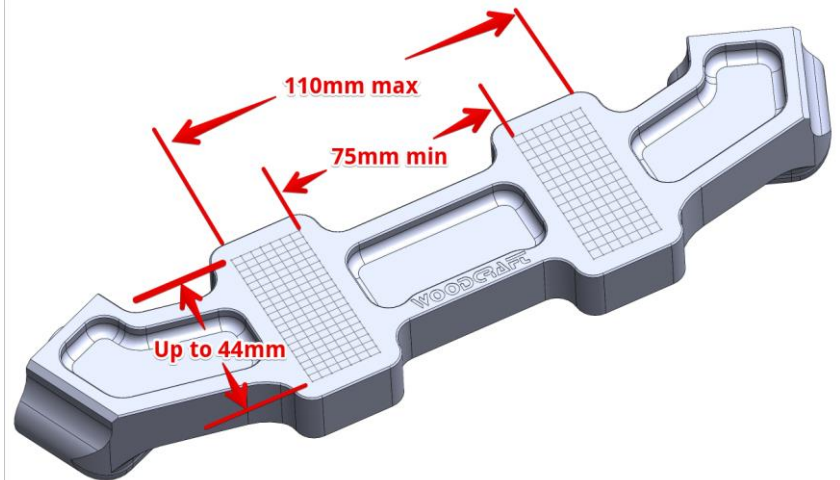
## 12-0999 Clipon Adapter Plate Installation Instructions

**WARNING** Installation and use of some Woodcraft Technologies, Inc. products will change the response of the motorcycle to rider control inputs. Failure of the rider to adapt to these changes may cause loss of control, and serious injury or death. Improper installation, and/or failure to comply with all warnings and instructions may cause loss of control and serious injury or death. **DO NOT INSTALL OR USE ANY WOODCRAFT TECHNOLOGIES, INC. PRODUCTS IF YOU ARE UNABLE TO DO SO IN COMPLIANCE WITH ALL INSTRUCTIONS AND WARNINGS. SEEK THE ASSISTANCE OF AN EXPERIENCED TECHNICIAN.**

To complete this installation you should have Blue Loctite, a small 2x4, a drill and drill bit set, masking tape, tape measure, center punch and a clamp with a 1.5 to 2 inch clamping range.

- 1) Completely remove your stock grips, controls and handlebar assembly. This kit replaces both the stock handlebar and the top handlebar clamp of the OEM assembly. This kit will work on bikes with side to side bolt spreads (center to center) between 75 and 110 mm and front to back bolt spreads of up to 44mm.

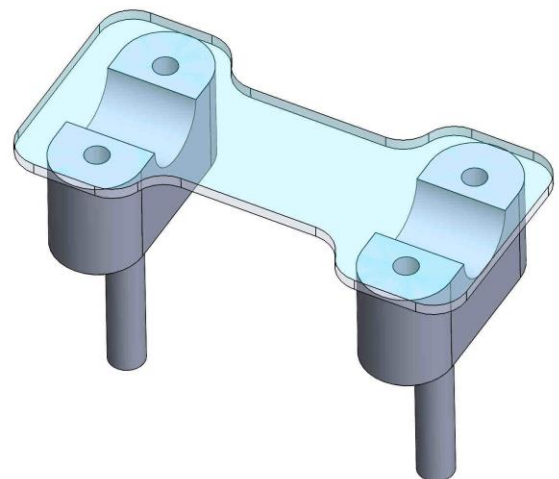
**NOTE:** Before drilling the mounting holes in your plate put the risers on the plate (finger tight), install the handlebars and controls and be sure to check that you have clearance from lock to lock for everything!



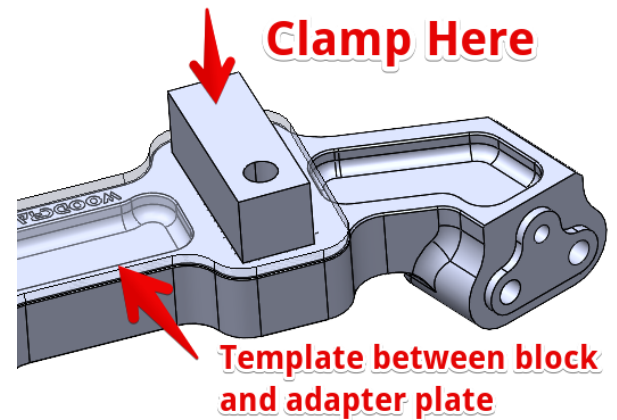
- 2) The 12-0999AP adapter plate is designed so that the riser portion of the clamps can point either up or down. Installers should pay careful attention that nothing binds through the entire range of motion.

**NOTE:** This kit assumes that your OEM mounting hardware is 8x1.25mm. This covers 90% of all motorcycles but before drilling be sure to check. If you have different hardware you will need a different drill bit (substitute for the 11/32 as described below) to complete this process.

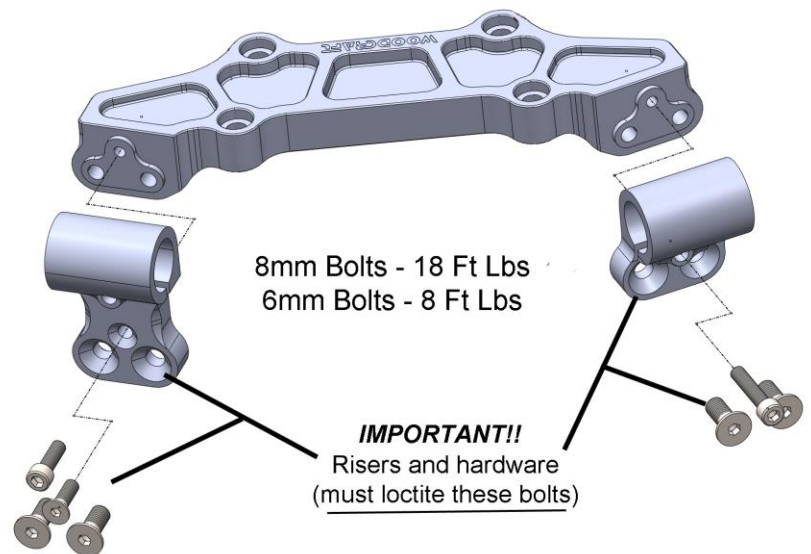
- 3) Lay the clear plastic mounting template over your stock handlebar mounts. Align the mount so that it is perfectly centered both front to back and side to side on the clamps by measuring the gaps with a tape measure. Once centered, use tape to temporarily secure it in place.
- 4) Take a pencil or thin magic marker and trace the 4 circles for the mounting bolts. Once you are satisfied that they are centered, remove the template from the mounts. Take an 11/32 drill and drill the four holes in your template. Place the template on a 2x4 and drill into the wood as you drill through the plastic.



- 5) To be sure that your holes are in the correct place, take the 4 included mounting bolts and thread them through the template and into the OEM mounts. With all bolts threaded in 3-4 turns, the template should still “float” slightly. If it does not, then adjust the location of the holes that are off center.
- 6) Take the template and lay it on top of the 12-0999 adapter plate. Use the pattern on the clamp to center your template on the plate and to locate the hole centers for each of the holes. Once it is perfectly centered, tape it in place and take a pencil to draw the 4 circles. Double check the alignment of the on the pattern to ensure that they are centered.
- 7) Use a center punch and mark the center of each hole. If you have a Bridgeport or a drill press, those are the best options for drilling the 4 holes. If you do not, then use the steel guide to help drill the holes.
- 8) Take the drill and place it in the drill block hole. Align the block so that the center of the drill finds the center punch mark that you made on the adapter plate. Clamp the block in place so that it does not move. The drill block will help keep the drill perpendicular to the plate.



- 9) Secure the plate to the OEM clamps with the supplied 8mm button head bolts, **using blue threadlocking compound on the threads.** Torque is about 18 ft-lbs.
- 10) Bolt the riser clamps to the adapter plate using the included bolts (varies per the riser that you choose). **IMPORTANT: All bolts that secure the risers to the clamps must have the threads completely coated with blue threadlocking compound before installation.**



- 11) The OEM controls have anti rotation pins, which require you to drill holes in the handlebars for proper installation. Measure the diameter of the holes in the stock bars and drill the same diameter holes.
- 12) Secure the bars into the riser clamps. Slide the controls into place, noting that the grips should end right where the plastic end plug meets the aluminum. Test the controls to be sure that they are securely tightened and that all your controls operate and return properly through the entire range of motion of the bars from lock to lock. Ensure that there is no interference through the entire steering range.

**WARNING - VERY IMPORTANT** : Ensure that the cables, hoses and all control parts do not contact any part of the motorcycle and that you have full ability to manipulate the controls throughout the entire range of steering. Also, be sure that the throttle returns freely after being fully opened throughout the entire range of steering. **FAILURE TO HEED THESE WARNINGS MAY CAUSE LOSS OF CONTROL OF MOTORCYCLE AND SERIOUS INJURY OR DEATH. DO NOT OPERATE THE MOTORCYCLE IF THERE ARE ANY INTERFERENCE ISSUES WITH EITHER THE MOTORCYCLE PARTS OR YOUR BODY, OR WITH A THROTTLE THAT DOES NOT RETURN FREELY.**