



YOSHIMURA

RESEARCH&DEVELOPMENT OF AMERICA, INC.

5420 DANIELS STREET STE A, CHINO CA 91710 · (800) 634-9166 · (909) 628-4722 · FAX (909) 591-2198

WWW.YOSHIMURA-RD.COM

Signature Series

Qualified Manufacturer Declared "Replacement Part"

2019~2022

KTM

250SX-F

350SX-F

2019~2022

Husqvarna

FC 250

FC 350

2021~2022

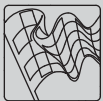
Gas Gas

MC 250F

MC 350F

2625305320 (SS/AL)

RS-12 Full-System Exhaust



Signature Series systems are:

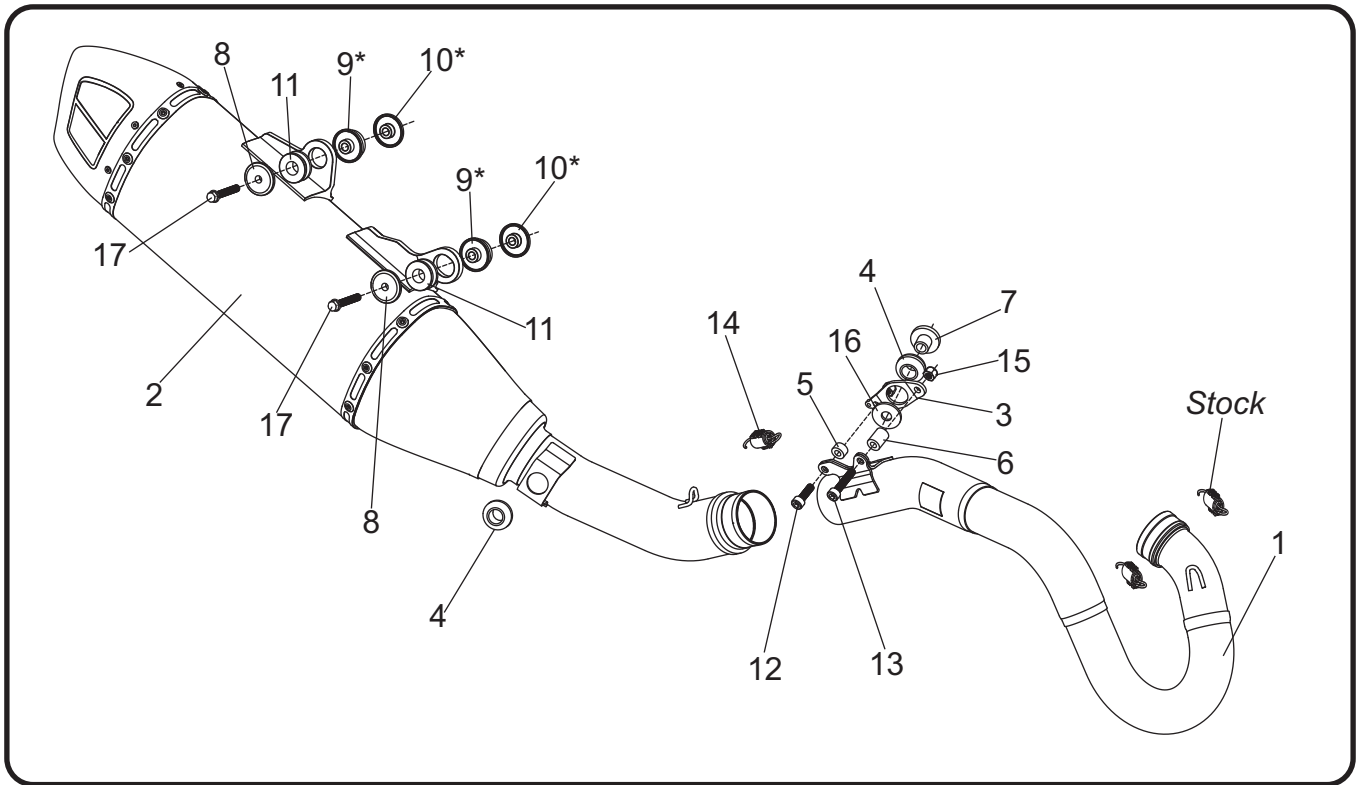
- CARB/EPA tail-pipe emissions compliant.
- Marked with appropriate EPA noise labels.
- Independent laboratory tested for EPA new vehicle noise compliance.



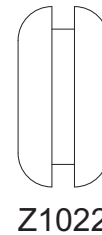
✘ CAUTION: The muffler packing on this system MUST be replaced every 6-8 hours of use, or after each moto. Failure to follow recommended muffler re-packing interval can cause muffler damage and may void the warranty. ✘

NOTE: IN THE STATE OF CALIFORNIA, IT IS ILLEGAL TO MODIFY THE EMISSION CONTROL SYSTEM, WHICH INCLUDES THE CARBURETORS OF ANY VEHICLE.

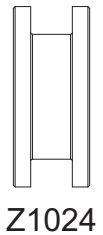
Assembly Diagram



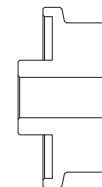
No.	Item	Description	Qty.
1	26253-104-1	Yoshimura SS Header	1
2	262530S320-RMA	Yoshimura Muffler Assembly	1
3	26253-104-HBKT	Header Mount Bracket	1
4	Z1022	Rubber Grommet	2
5	6X12X7SPCRHA	Short Header Bracket Spacer	1
6	6X12X16SPCRHA	Long Header Bracket Spacer	1
7	ALS-062	Aluminum Spacer	1
8	ALS-046	Aluminum Spacer	2
9*	ALS-065	Aluminum Spacer for Husqvarna	2
10*	ALS-057	Aluminum Spacer for KTM/Gas Gas	2
11	Z1024	Rubber Grommet	2
12	M6X20	6mm x 20mm Socket Head Cap Screw	1
13	M6X30	6mm x 30mm Socket Head Cap Screw	1
14	RACE-SPX-2	Short Exhaust Spring	1
15	6MMLN	6mm Nylon Lock Nut	2
16	8MMWASHERL	8mm Large Washer	1
17	M6X35H	6mm x 35mm Flanged Hex Head Bolt	2
**	S-1GM	Anti-Seize	1
**	ALFOILHS-8X10	Foil Heatshield	1
**	26253-HS-TEMP	Husqvarna Heatshield Template	1
**	ST-200	Spring Puller Tool	1
**	347PLUG	Wash Plug	1
**	17100	Sticker Sheet	1
OPTIONAL REPLACEMENT PARTS			
REPACK-RS12-P22		Re-pack Kit	
SA-19-K		Spark Arrester Kit	



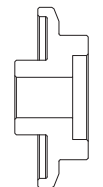
Z1022



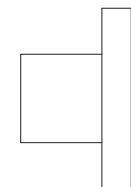
Z1024



ALS-065



ALS-057



ALS-062

** Not shown on diagram.

CAUTION: Exhaust system can be extremely hot. Let motorcycle cool down before beginning installation. Always wear hand and eye protection and take precautionary measures to avoid injury.

WARNING: Always properly support vehicle with a stand and/or lift when servicing or performing any work. Unstable vehicles may present dangerous conditions and may cause property damage and/or personal injury.

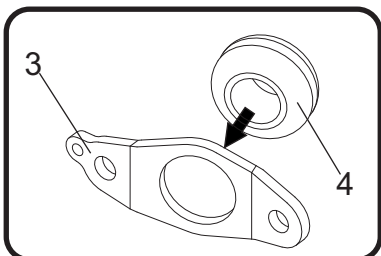
NOTE: Read through all instructions before beginning installation.

Removal

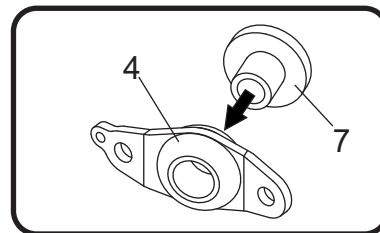
1. Remove the stock exhaust spring between the muffler and header.
2. While securely supporting the stock muffler, remove the two muffler mount bolts and carefully remove the stock muffler.
3. Remove the two header exhaust springs.
4. Remove the header chassis mount bolt and carefully remove the stock header.
5. *For Husqvarna FC250/350, remove side panel as heatfoil needs to be applied on the backside of panel. Remove wedge-shaped subframe heat protector as it will require trimming.*

Installation

1. Install (No. 4) Z1022, rubber grommet into (No. 3) 26253-104-HBKT, header mount bracket. Use soap and water mixture to lubricate grommet to ease installation.



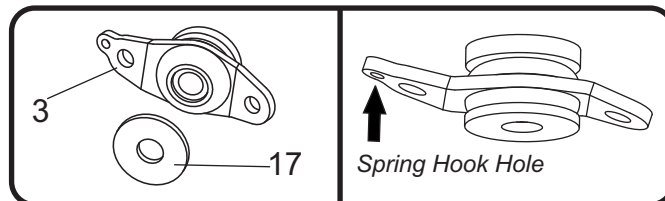
2. Install (No. 7) ALS-062, aluminum spacer into (No. 4) Z1022, rubber grommet as shown.



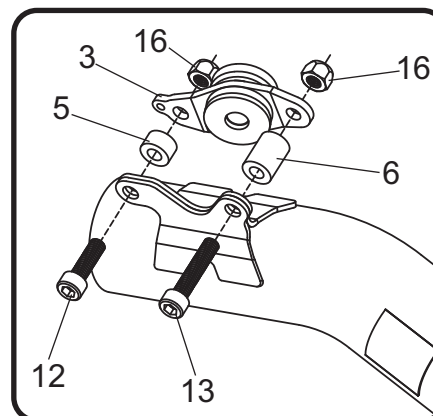
3. Install (No. 3) 26252-104-HBKT, header mount bracket to stock header mount using the stock bolt and (No. 17) 8MMWASHERL, 8mm large washer. Do not torque at this time.

Note¹: The spring hook hole on the bracket must be facing toward the rear.

Note²: Note the bracket bend orientation when installing.



4. Install (No. 1) 26253-104-1, header onto stock manifold and secure using stock exhaust springs.
5. Secure (No. 1) 26253-104-1, header to (No. 3) 26253-104-HBKT, header mount bracket using (No. 12,13) M6X20 and M6X30, 6mm screws and (No. 5,6) 6X12X7SPCRHA and 6X12X16SPCRHA, short and long header bracket spacers and (No. 16) 6MMLN, 6mm nylon lock nuts as shown.



*For KTM models, proceed to Step 12.
For Husqvarna models, follow Steps 6 - 11.*

6. Using a marker and the upper rib as a guide, mark a straight line as shown below. Trim subframe heat protector using shears or a rotary tool.



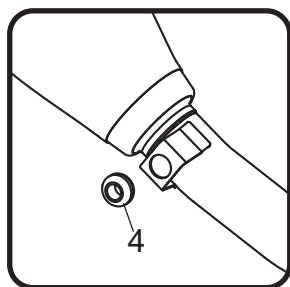
7. Re-install subframe heat protector.
8. Cut out paper heatshield template and trace onto supplied heat foil and cut heat foil.
9. Clean the backside of side panel making sure it is free of debris and wipe dry.
10. Apply heat foil on side panel as shown.



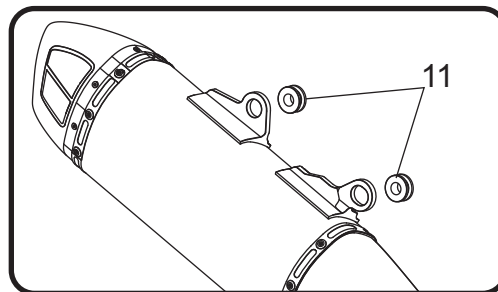
11. Re-install side panel.

Note: Side panel bolt is not accessible with muffler installed.

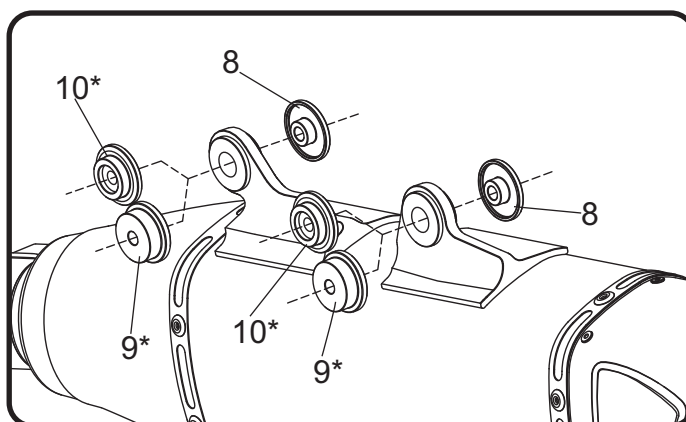
12. Install (No. 4) Z1022, rubber grommet into muffler/tailpipe bracket.



13. Install (No. 11) Z1024, rubber grommets into muffler brackets.



14. Install (No. 9) ALS-065, aluminum spacers for Husqvarna OR (No. 10) ALS-057, aluminum spacers for KTM/Gas Gas, in the backside of (No. 4) Z1024, rubber grommet and install (No. 8) ALS-046, aluminum spacers in the frontside as shown below.



15. Apply supplied anti-seize inside muffler/tailpipe machined joint and spread evenly. Install (No. 2) 262530S320-RMA, muffler/tailpipe inlet onto (No. 1) 26253-104-1, header outlet and align muffler mount brackets to muffler mounts. Secure using supplied (No. 17) M6X35H, 6mm bolts.

16. Torque muffler mount bolts to factory specification.

17. Torque header chassis mount bolt to factory specification.

18. Hook (No. 15) RACE-SPX-2, short exhaust spring onto hole in (No. 3) 26253-104-HBKT, header bracket and install spring between muffler and header using ST-200, spring puller tool supplied in the kit.

19. Before starting vehicle, check for proper clearance between new exhaust system and rear suspension (i.e. tire, swingarm, brakes, rear shock, and etc.) If any problem is found, please carefully follow through the installation steps again. If problem still persists, please call Yoshimura Tech Department at (800) 634-9166 / in CA (909) 628-4722.

20. It is recommended that the muffler and tailpipe be wiped down with rubbing alcohol to remove oil and fingerprints. This will help prevent tarnishing of the finish after the exhaust is heated up.

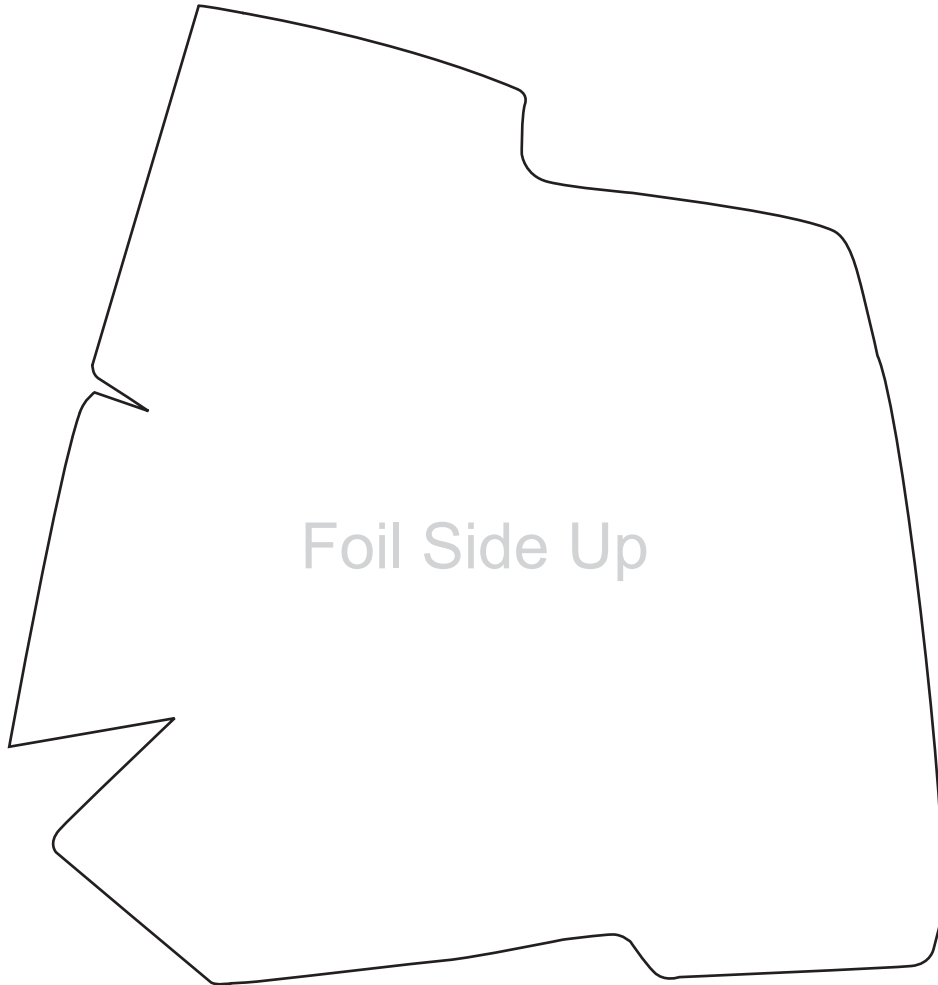
Note: After starting motorcycle, it is normal for new exhaust system and muffler to emit smoke until oil residue burns off.

Machined Joint Care & Maintenance

Clean and inspect machined joints when servicing the muffler during regular intervals.

Re-apply anti-seize on joints before re-installing exhaust system to maintain durability.

Husqvarna FC250/FC350 Heatshield Template



Be sure not to scale or resize when printing template.
Verify template is 1:1 using the scale below.



Dear Yoshimura Customer,

Congratulations and thank you for purchasing a Yoshimura Exhaust System. Over six decades of experience in research and development, state of the art machinery, materials and craftsmanship of the highest quality all come together in a product of exceptional quality and performance—in other words, this is the best thing you can put on your bike. We strive to provide you with a product perfect in fit and finish. However, if you have any problems, please give us a call. We have found that most fitment issues can be easily resolved by a conversation with one of our knowledgeable and friendly staff. If the issue cannot be resolved this way, our warranty evaluation program may be the answer. Please take a moment to review our recommendations for the care of your exhaust and our warranty information.

PLEASE NOTE: If you have any doubts about your exhaust: **DO NOT START THE MOTORCYCLE! ONCE AN EXHAUST HAS BEEN USED OR MODIFIED, IT CANNOT BE RETURNED FOR CREDIT OR EXCHANGE.**

EXHAUST SYSTEM MAINTENANCE

Yoshimura Exhaust Systems require very little care and maintenance; here are a few tips:

1. Use mild car/motorcycle soap to clean the exhaust system—do not use any abrasives or degreasers.
2. Clean your exhaust with metal/stainless polish every 1-2 months to retain the luster and remove dirt and grime. (DO NOT USE POLISH ON “WORKS FINISH” SYSTEMS)
3. Avoid contaminating exhaust surfaces when hot.
4. Your exhaust system will change color (blue, magenta, purple, and/or gold) due to heat; this is normal.
5. Keep all clamps, bolts and other fasteners tight as exhaust systems are susceptible to vibration damage.
6. If you ride in coastal regions or areas that use salt to control ice and snow, wipe the exhaust down after it cools to remove any possible salt residue, which can result in rusting.
7. If you are storing your motorcycle for the season, wipe the exhaust system down with rubbing alcohol before storage.
8. Head pipes glowing (visible in normal light) may indicate an excessively lean condition that must be corrected.

CARBON FIBER:

Carbon fiber equipped exhaust components require special attention. The following addresses wear issues directly related to carbon fiber:

1. Keep all clamps, bolts and other fasteners tight. Carbon Fiber is very susceptible to vibration damage.
2. Keep all chemicals and solvents away from the carbon fiber, as they will damage the finish.
3. High temperatures will cause the resin in the carbon fiber to break down. Visual signs such as an amber hue in the resin may be early signs of heat damage to carbon fiber.
4. Upon seeing amber colored resin, discontinue use. The exhaust system needs to be inspected by a representative from Yoshimura, for repack, and/or repair. Continued use will cause component failure.

STAINLESS STEEL:

Stainless Steel is not rust proof but is less prone to rusting, staining and pitting; but it is prone to oxidation like all metals.

WORKS FINISH:

1. Works Finish exhaust systems should never be cleaned with abrasives or polishes.
2. Yoshimura recommends using “Bar Keepers Friend” cleaner to remove minor stains.
3. Surface reconditioning services are available to remove scratches and undesirable discoloration due to extreme heat. Contact Yoshimura Tech Department at (800) 634-9166 / in CA (909) 628-4722 for more information.

RE-PACKING TIPS

To maintain maximum sound and engine performance the muffler packing will need to be replaced at some time during the muffler's life. Yoshimura recommends repacking your muffler at least once a year.

Failure to maintain the muffler packing may cause damage to the muffler and/or void the warranty. Regularly inspect the muffler body for discoloration, cracks, rattling, or other signs of wear caused by depleted muffler packing. If muffler packing is determined to be depleted or worn, a Yoshimura muffler re-pack kit is highly recommended to restore the muffler to optimum maximum performance.

Yoshimura offers a 3-5 day turn around (plus transit time) to inspect and refurbish used and damaged mufflers.

For more information on muffler repacking please visit our website at: <https://www.yoshimura-rd.com/pages/repack-and-insert-chart>

*****PRO TIP***** Before you install your new muffler for the first-time log the weight in your Owner's or Service manual along with the current hours or mileage on your vehicle. When you are performing periodic maintenance on your vehicle (like a tire change, or an oil change) you can remove your Yoshimura muffler from the vehicle and weigh it again. Over time, the packing material inside your muffler will burn off with use, and the muffler will need to be repacked. When the weight loses approximately 100 grams of the original weight, you should consider getting your Yoshimura muffler repacked. You can order repacking kit or the parts to repack the muffler from the Yoshimura website, or your local dealer. You can also contact the Yoshimura sales office and arrange to send in your muffler for the repacking service too.

IMPORTANT TECHNICAL NOTE

Yoshimura recommends on all race exhaust systems, that all spring joints be safety wired. Recommended wire type 304/316 stainless steel with a .032" diameter should be used.

YOSHIMURA EXHAUST LIMITED WARRANTY

All Yoshimura R&D of America, Inc., exhaust systems carry a one-year limited warranty against defects in workmanship and/or materials.

WHO IS COVERED?

This warranty is provided to the original purchaser of the exhaust system.

WHAT VOIDS THE WARRANTY?

1. Abuse, misuse, improper installation and/or modifications
2. Custom applications
3. No proof of purchase at the time of warranty. Claimant must provide proof of purchase (original receipt or invoice) and a warranty authorization number (RMA) obtained from Yoshimura.
4. Finishes such as plating or painted surfaces with discoloration or rust due to inclement weather conditions, exposure to salt, exposure to chemicals, or lack of maintenance by the customer are not covered.
5. International grey-market product purchased through a dealer/distributor not authorized for your country will not be supported by this warranty.

EXTENT OF WARRANTY:

Any defective exhaust system properly returned to Yoshimura will be repaired or replaced by Yoshimura. Yoshimura is not responsible for any other expense incurred by the customer under the terms of this limited warranty, nor is Yoshimura responsible for any damages either consequential, incidental, special, contingent or otherwise; or expenses or injury arising directly or indirectly from the use of the exhaust system. Any exhaust system returned to Yoshimura must be sent at the customer's expense along with the proof of purchase and warranty authorization (RMA). Yoshimura reserves the right to determine whether the terms of the warranty, set out above, have been properly followed. In the event that the terms are not followed this warranty is void. Yoshimura is the sole determiner of abuse, misuse,

installation errors and modifications—should any of these be found, this warranty is void. The duration of any and all implied warranties are limited to the duration of the express warranty. All incidental or consequential damages are hereby excluded. The warranty gives you specific legal rights and you may have other rights, which vary from state to state. Some states do not allow the exclusion or limitation of incidental or consequential damages or limitations on how long an implied warranty lasts, so the above limitations and exclusions may not apply to you.

If you have a fitment or other problem, or are missing a part, please double-check this trouble shooting guide first:

1. Reference your instruction sheet and double-check all drawings and instructions
2. Make sure muffler clamps are installed correctly (refer to instructions diagram). On many models, there is a right and wrong way to install. Also verify part numbers on headers and tail pipe.
3. Always make sure to install spring-mounted manifolds and flanges on cylinder head prior to installing headers.
4. Always take time to examine problems in detail.
5. When all else fails, call our technical support line at (909) 628-4722. The technical line is open 9:00am – 4:30pm Monday through Friday, Pacific Time. Please have the following information handy: Year/Make/Model of motorcycle, date of purchase, place of purchase, batch dates and part numbers (found on header and tail-pipe components).
6. Also, feel free to ask through online e-mail at sales@yoshimura-rd.com, or fax your question/problems to (909) 591-2198.

To obtain technical information directly from Yoshimura, call (909) 628-4722.