

POWER COMMANDER 6

Installation Guide for: PC6-20010

Model Coverage: 2007-2009 Suzuki Bandit 1250

PARTS LIST

- | | |
|----------------------|--------------------------|
| 1 POWER COMMANDER 6 | 2 POWER COMMANDER DECALS |
| 1 INSTALLATION GUIDE | 2 VELCRO STRIPS |
| 1 USB CABLE | 1 ALCOHOL SWAB |
| 2 DYNOJET DECALS | 1 POSI-TAP |

**PLEASE READ ALL DIRECTIONS BEFORE STARTING INSTALLATION.
THE IGNITION MUST BE TURNED OFF BEFORE INSTALLATION.**



INPUT ACCESSORY GUIDE



OPTIONAL ACCESSORY INPUTS

- Map** (Input 1 or 2) The PC6 has the ability to hold 2 different base maps. You can switch on the fly between these two base maps when you hook up a switch to the MAP inputs. You can use any open/close type switch. The polarity of the wires is not important.
- Shifter** (Input 1 or 2) Used for clutch-less full throttle upshifts. Insert the wires from the Dynojet quick shifter into either Input 1 or Input 2. The polarity of the wires is not important. Set to Input 2 by default.
- Speed** If your application has a speed sensor then you can tap into the signal side of the sensor and run a wire into this input. This will allow you to calculate gear position in the Control Center Software. Once gear position is setup you can alter your map based on gear position and setup gear dependent kill times when using a quick shifter.
- Analog** This input is for a 0-5v signal such as engine temp, boost, etc. Once this input is established you can alter your fuel curve based on this input in the Power Core software.
- Launch** You can connect a wire to either Input 1 or Input 2 and then the other end to a switch. This switch when engaged (continuity) will only allow the RPM to be raised to a certain limit (set in the software). When released, you will have full RPM.

WIRE CONNECTIONS

To input wires into the PC6 first remove the rubber plug on the backside of the unit and loosen the screw for the corresponding input. Using a 22-24 gauge wire, strip about 10mm from its end. Push the wire into the hole of the PC6 until it stops and then tighten the screw. Make sure to reinstall the rubber plug.

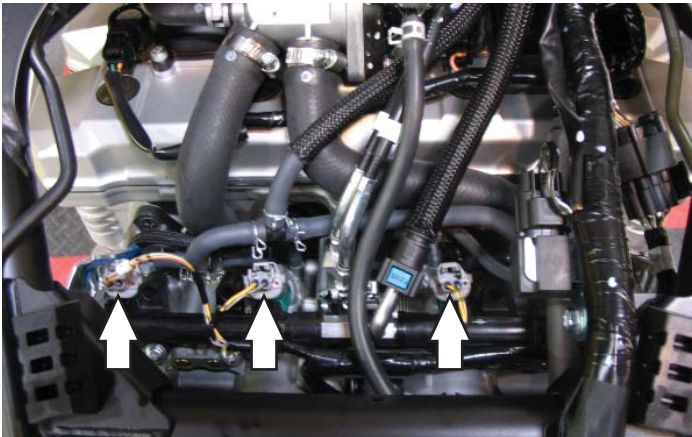
NOTE: If you tin the wires with solder it will make inserting them easier.



INSTALLING THE POWER COMMANDER 6

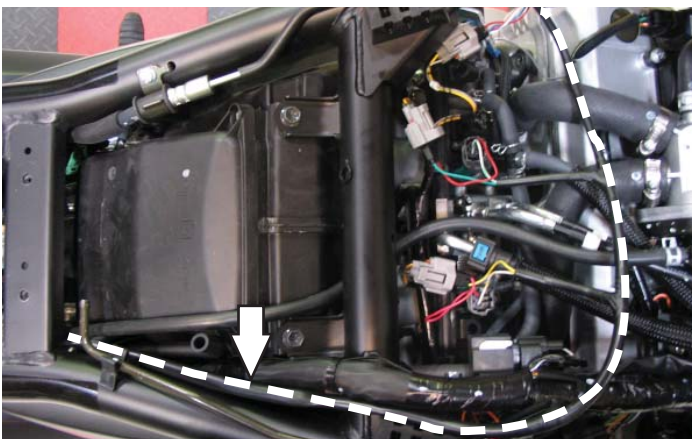


- 1 Remove the seat
- 2 Remove the fuel tank.
- 3 Lay the PC6 in the tail section.
- 4 Route the wiring harness from the PC6 under the sub-frame crossover and go towards the throttle bodies.



- 5 Unplug the stock wiring harness from each of the fuel injectors.

Injector #4 is hidden in this picture by the main wiring harness.



- 6 Plug the connectors from the PC6 in-line of the fuel injectors and the stock wiring harness.

The pair of leads on the PC6 wiring harness with **ORANGE** colored wires go in-line of the cylinder #4 (right-most) fuel injector.

The pair of leads on the PC6 wiring harness with **YELLOW** colored wires go in-line of the cylinder #3 fuel injector.

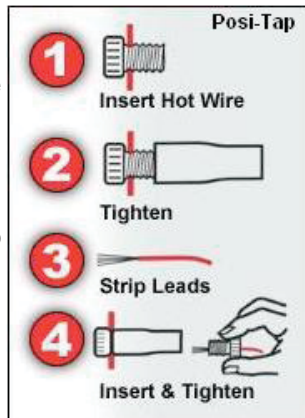
The pair of leads on the PC6 wiring harness with **GREEN** colored wires go in-line of the cylinder #2 fuel injector.

The pair of leads on the PC6 wiring harness with **BLUE** colored wires go in-line of the cylinder #1 (left-most) fuel injector.

- 7 Locate the Throttle Position Sensor which is on the left hand side of the throttle bodies. Unplug this connector to gain access to the wires.

- 8 Attach the supplied Posi-tap to the stock PINK/BLACK wire of the bike's TPS.

This connection can be done further up the harness than what is shown for a cleaner install.



- 9 Attach the GREY wire from the PC6 to the opposite end of the Posi-tap.

It is recommended to use dielectric grease on these connections

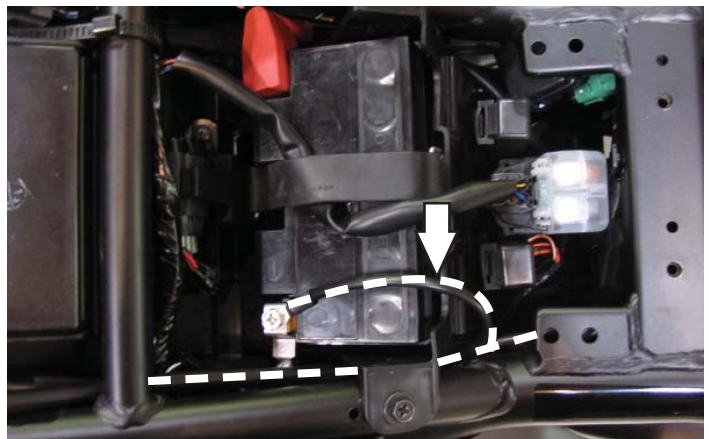
- 10 Plug the TPS connector back onto the throttle body.

- 11 Secure the PC6 ground wire with the small ring lug to the negative (-) terminal of the bike's battery.

- 12 Reinstall the fuel tank making sure the PC6 harness does not get pinched.

- 13 Using the supplied Velcro, secure the PC6 in the tail section.

Clean both surfaces with the supplied alcohol swab prior to applying the Velcro adhesive.



Download the latest map files from our web site at dynojet.com/tunes.



**PUSH
THE
LIMIT**

2191 MENDENHALL DRIVE, NORTH LAS VEGAS, NV 89081 - 800-992-4993 - DYNOJET.COM
© 2007-2022 DYNOJET RESEARCH ALL RIGHTS RESERVED