

POWER COMMANDER 6

Installation Guide for: PC6-17003

Model Coverage: 2009-2012 Kawasaki ZX6R

PARTS LIST



- | | |
|----------------------|--------------------------|
| 1 POWER COMMANDER 6 | 2 POWER COMMANDER DECALS |
| 1 INSTALLATION GUIDE | 2 VELCRO STRIPS |
| 1 USB CABLE | 1 ALCOHOL SWAB |
| 2 DYNOJET DECALS | 1 POSI-TAP |

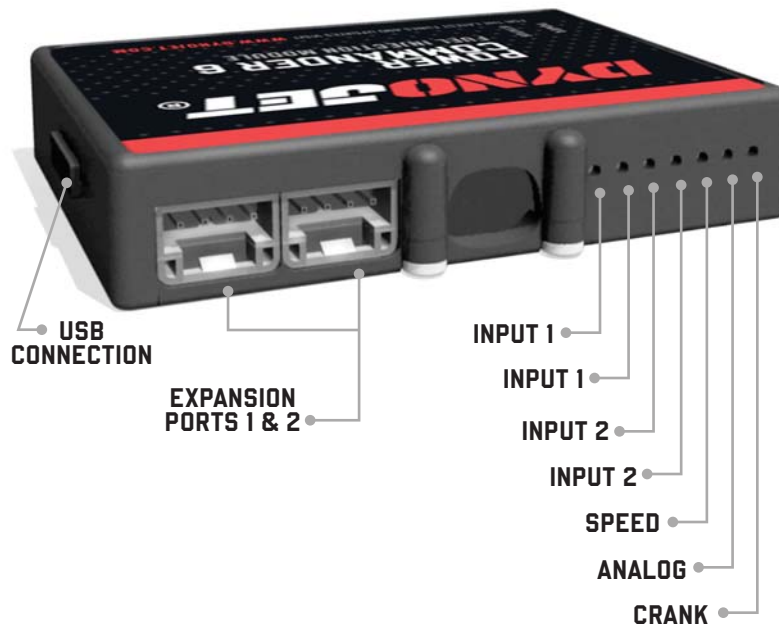
**PLEASE READ ALL DIRECTIONS BEFORE STARTING INSTALLATION.
THE IGNITION MUST BE TURNED OFF BEFORE INSTALLATION.**



IPC6-17003.01



INPUT ACCESSORY GUIDE



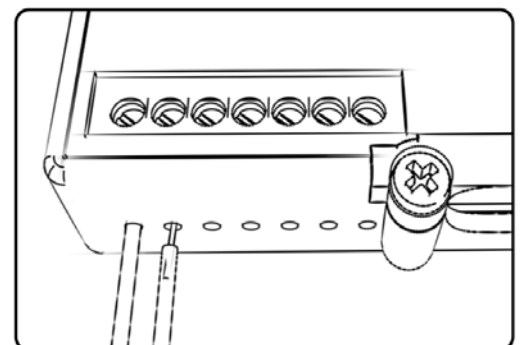
OPTIONAL ACCESSORY INPUTS

- Map** (Input 1 or 2) The PC6 has the ability to hold 2 different base maps. You can switch on the fly between these two base maps when you hook up a switch to the MAP inputs. You can use any open/close type switch. The polarity of the wires is not important.
- Shifter** (Input 1 or 2) Used for clutch-less full throttle upshifts. Insert the wires from the Dynojet quick shifter into either Input 1 or Input 2. The polarity of the wires is not important. Set to Input 2 by default.
- Speed** If your application has a speed sensor then you can tap into the signal side of the sensor and run a wire into this input. This will allow you to calculate gear position in the Control Center Software. Once gear position is setup you can alter your map based on gear position and setup gear dependent kill times when using a quick shifter.
- Analog** This input is for a 0-5v signal such as engine temp, boost, etc. Once this input is established you can alter your fuel curve based on this input in the Power Core software.
- Launch** You can connect a wire to either Input 1 or Input 2 and then the other end to a switch. This switch when engaged (continuity) will only allow the RPM to be raised to a certain limit (set in the software). When released, you will have full RPM.

WIRE CONNECTIONS

To input wires into the PC6 first remove the rubber plug on the backside of the unit and loosen the screw for the corresponding input. Using a 22-24 gauge wire, strip about 10mm from its end. Push the wire into the hole of the PC6 until it stops and then tighten the screw. Make sure to reinstall the rubber plug.

NOTE: If you tin the wires with solder it will make inserting them easier.



INSTALLING THE POWER COMMANDER 6



- 1 Remove the main seat and the passenger seat.
- 2 Prop the fuel tank up.
- 3 Using the supplied Velcro, secure the PC6 in the tail section as shown.

Be sure to clean both surfaces with the supplied alcohol swab prior to applying the Velcro.
- 4 Route the PC6 harness down the left side of the bike.



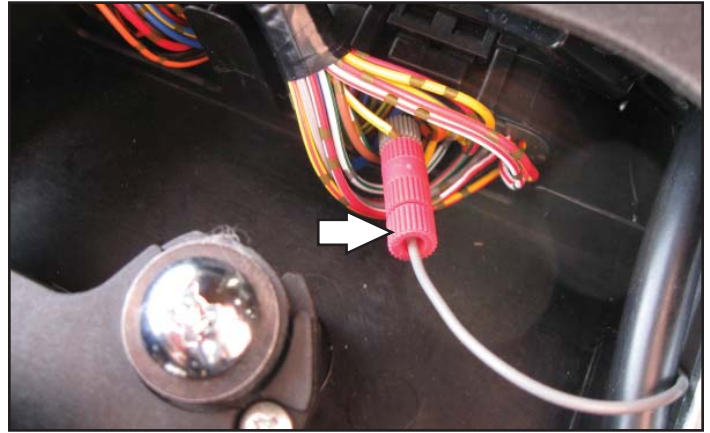
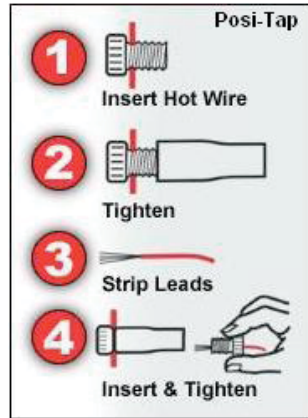
- 5 Unplug the stock wiring harness from each of the lower fuel injectors.

The lower injectors are located on the throttle bodies.



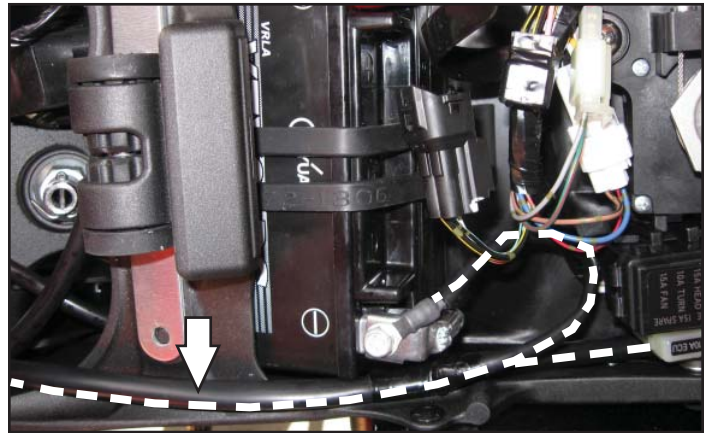
- 6 Attach the connectors from the PC6 to the stock wiring harness and each injector.

- 7 Locate the YELLOW/WHITE wire on the left ECU plug.
- 8 Using the supplied posi-tap, attach the GREY wire from the PC6 to the YELLOW/WHITE wire of the stock harness.



- 9 Attach the ground wire of the PC6 with the 6mm ring lug to the negative terminal of the bike's battery.
- 10 Reinstall the fuel tank.
- 11 Reinstall the main seat and the passenger seat.

Download the latest map files from our web site at dynojet.com/tunes.



Optional Inputs:

Speed - YELLOW wire - Sensor is on the front sprocket cover, or use pin 6 on the left ECU connector.

Engine Temperature - ORANGE wire - pin 9 on the left ECU connector.

12v Source for AutoTune - RED wire at the tail light connector.



**PUSH
THE
LIMIT**

**2191 MENDENHALL DRIVE, NORTH LAS VEGAS, NV 89081 - 800-992-4993 - DYNOJET.COM
© 2009-2022 DYNOJET RESEARCH ALL RIGHTS RESERVED**