

# POWER COMMANDER 6

Install guide for: PC6-22080

Model coverage:

2017 Yamaha FZ-10

2018-2021 Yamaha MT-10

## PARTS LIST



- |                      |                          |
|----------------------|--------------------------|
| 1 POWER COMMANDER 6  | 2 POWER COMMANDER DECALS |
| 1 INSTALLATION GUIDE | 2 VELCRO STRIPS          |
| 1 USB CABLE          | 1 ALCOHOL SWAB           |
| 2 DYNOJET DECALS     | 1 POSI-TAP               |

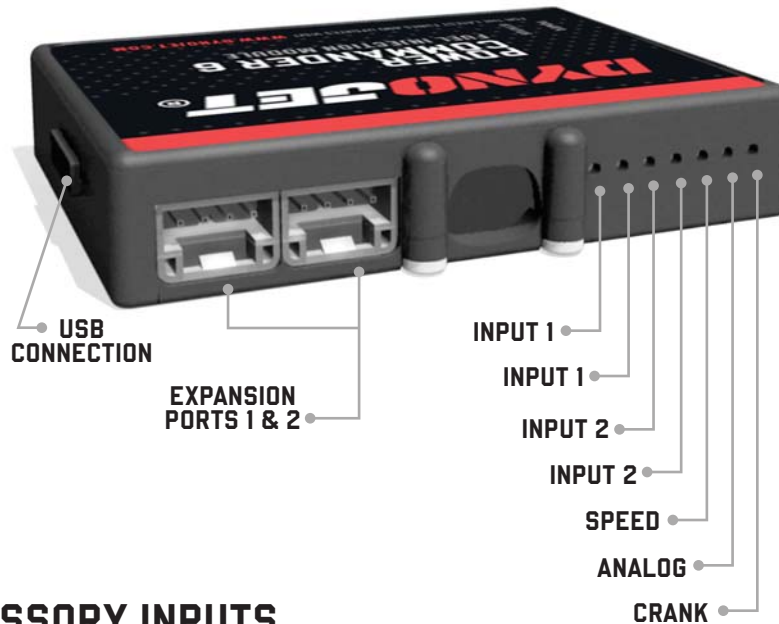
**PLEASE READ ALL DIRECTIONS BEFORE STARTING INSTALLATION.  
THE IGNITION MUST BE TURNED OFF BEFORE INSTALLATION.**



IPC6-22080.01



# INPUT ACCESSORY GUIDE



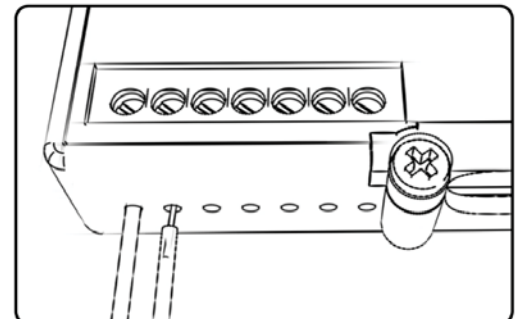
## OPTIONAL ACCESSORY INPUTS

- Map** (Input 1 or 2) The PC6 has the ability to hold 2 different base maps. You can switch on the fly between these two base maps when you hook up a switch to the MAP inputs. You can use any open/close type switch. The polarity of the wires is not important.
- Shifter** (Input 1 or 2) Used for clutch-less full throttle upshifts. Insert the wires from the Dynojet quick shifter into either Input 1 or Input 2. The polarity of the wires is not important. Set to Input 2 by default.
- Speed** If your application has a speed sensor then you can tap into the signal side of the sensor and run a wire into this input. This will allow you to calculate gear position in the Control Center Software. Once gear position is setup you can alter your map based on gear position and setup gear dependent kill times when using a quickshifter.
- Analog** This input is for a 0-5v signal such as engine temp, boost, etc. Once this input is established you can alter your fuel curve based on this input in the Power Core software.
- Launch** You can connect a wire to either Input 1 or Input 2 and then the other end to a switch. This switch when engaged (continuity) will only allow the RPM to be raised to a certain limit (set in the software). When released, you will have full RPM.

## WIRE CONNECTIONS

To input wires into the PC6 first remove the rubber plug on the backside of the unit and loosen the screw for the corresponding input. Using a 22-24 gauge wire, strip about 10mm from its end. Push the wire into the hole of the PC6 until it stops and then tighten the screw. Make sure to reinstall the rubber plug.

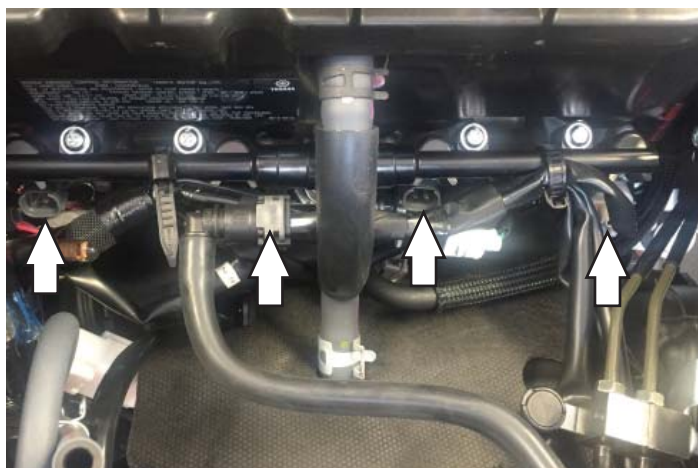
NOTE: If you tin the wires with solder it will make inserting them easier.



# INSTALLING THE POWER COMMANDER 6



- 1 Remove the seat and the fuel tank.
- 2 Remove the left hand side cover and the cover over the ECU.



- 3 Lay the PC6 in the tail section and route down the left side of the frame and go towards the throttle bodies.
- 4 Plug the PC6 in-line of the stock injectors and wiring harness.

PC6 ORANGE colored wires go to cylinder #1.

PC6 YELLOW colored wires go to cylinder #2.

PC6 GREEN colored wires go to cylinder #3.

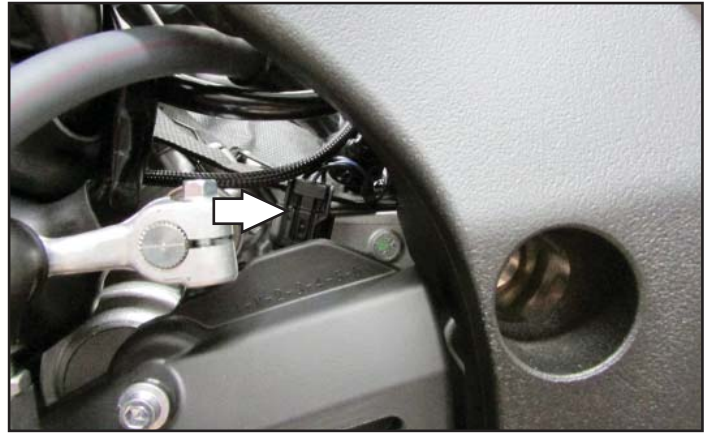
PC6 BLUE colored wires go to cylinder #4.



- 5 Attach the ground wire of the PC6 to the common ground location towards the rear of the engine.

- 6 Plug the PC6 in-line of the stock gear position sensor and wiring harness.

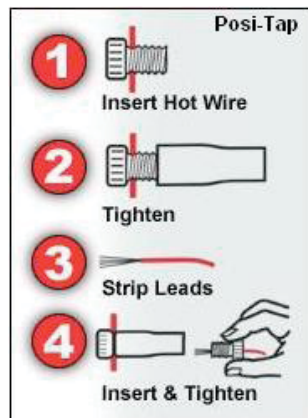
This connection is located on the left side of the engine above the sprocket cover.



- 7 Unplug the small connector from the ECU. This will allow access to the harness. Pull the sheathing back

- 8 Use the supplied Posi-tap to attach the PC6 GREY wire to the stock WHITE wire of the ECU.

There are 2 WHITE wires. Looking at the back of the connector go to pin #11.



- 9 Plug the connector back into the ECU.

- 10 Unplug the crank position sensor connector.

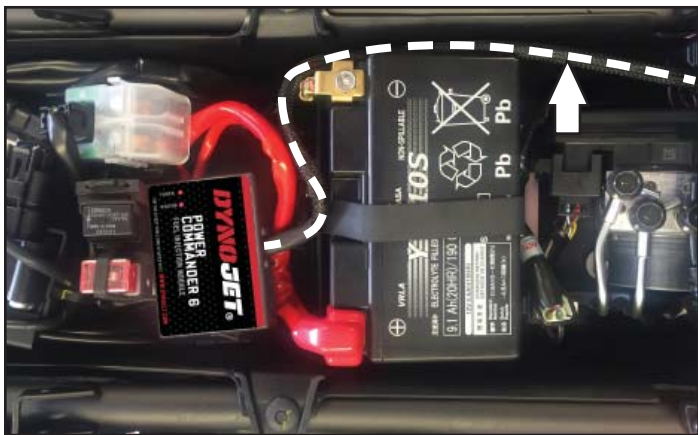
This connection is located near the ECU. It is located inside a rubber boot that you will need to pull back to access.



- 11 Plug the PC6 wiring harness in-line of the CPS and the stock wiring harness.







- 12 Secure the PC6 in the tail section.
- 13 Reinstall fuel tank and bodywork.

Download the latest map files from our web site at [dynojet.com/tunes](http://dynojet.com/tunes).



**PUSH  
THE  
LIMIT**

**2191 MENDENHALL DRIVE, NORTH LAS VEGAS, NV 89081 - 800-992-4993 - DYNOJET.COM**  
**© 2016-2022 DYNOJET RESEARCH ALL RIGHTS RESERVED**