

# POWER COMMANDER 6

Install guide for: PC6-17016

Model coverage: 2007-2012 Kawasaki Z750

## PARTS LIST

×

- |   |                    |   |                        |
|---|--------------------|---|------------------------|
| 1 | POWER COMMANDER 6  | 2 | POWER COMMANDER DECALS |
| 1 | INSTALLATION GUIDE | 2 | VELCRO STRIPS          |
| 1 | USB CABLE          | 1 | ALCOHOL SWAB           |
| 2 | DYNOJET DECALS     | 1 | POSI-TAP               |

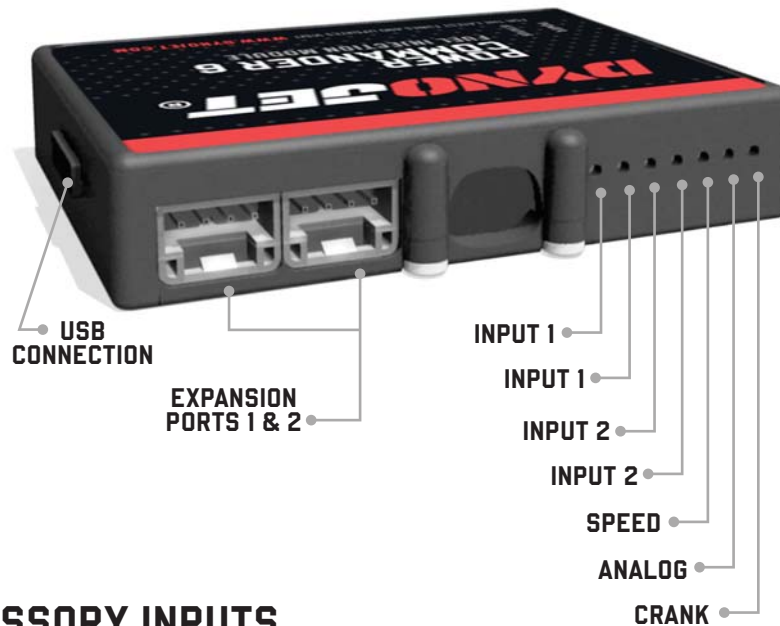
**PLEASE READ ALL DIRECTIONS BEFORE STARTING INSTALLATION.  
THE IGNITION MUST BE TURNED OFF BEFORE INSTALLATION.**

×

IPC6-17016.01



# INPUT ACCESSORY GUIDE



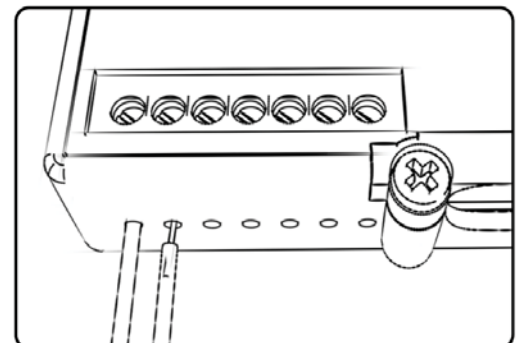
## OPTIONAL ACCESSORY INPUTS

- Map** (Input 1 or 2) The PC6 has the ability to hold 2 different base maps. You can switch on the fly between these two base maps when you hook up a switch to the MAP inputs. You can use any open/close type switch. The polarity of the wires is not important.
- Shifter** (Input 1 or 2) Used for clutch-less full throttle upshifts. Insert the wires from the Dynojet quick shifter into either Input 1 or Input 2. The polarity of the wires is not important. Set to Input 2 by default.
- Speed** If your application has a speed sensor then you can tap into the signal side of the sensor and run a wire into this input. This will allow you to calculate gear position in the Control Center Software. Once gear position is setup you can alter your map based on gear position and setup gear dependent kill times when using a quick shifter.
- Analog** This input is for a 0-5v signal such as engine temp, boost, etc. Once this input is established you can alter your fuel curve based on this input in the Power Core software.
- Launch** You can connect a wire to either Input 1 or Input 2 and then the other end to a switch. This switch when engaged (continuity) will only allow the RPM to be raised to a certain limit (set in the software). When released, you will have full RPM.

## WIRE CONNECTIONS

To input wires into the PC6 first remove the rubber plug on the backside of the unit and loosen the screw for the corresponding input. Using a 22-24 gauge wire, strip about 10mm from its end. Push the wire into the hole of the PC6 until it stops and then tighten the screw. Make sure to reinstall the rubber plug.

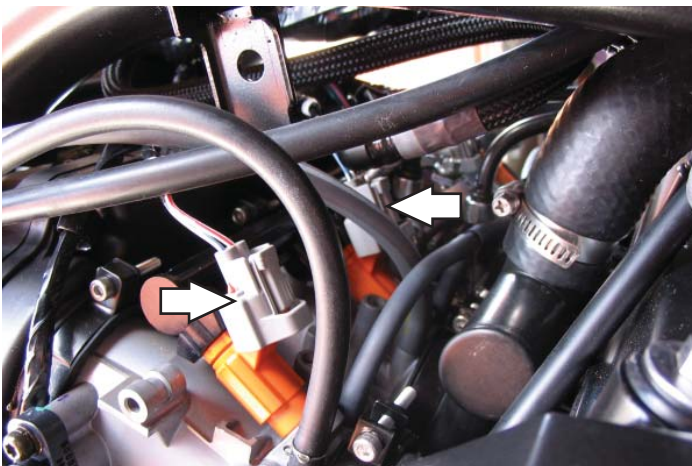
NOTE: If you tin the wires with solder it will make inserting them easier.



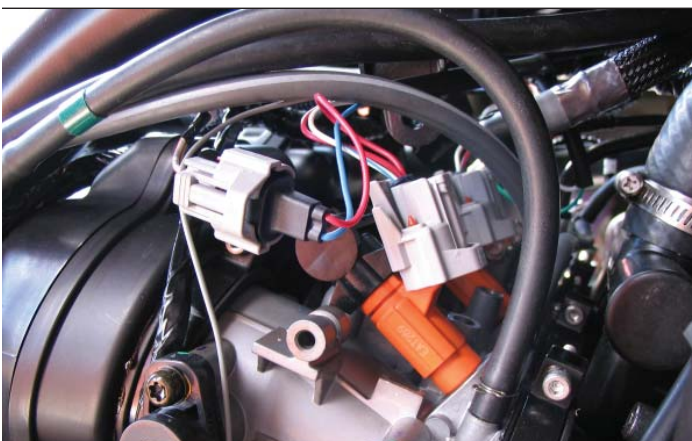
# INSTALLING THE POWER COMMANDER 6



- 1 Remove the main seat and the passenger seat.
- 2 The installation can be done without removing the fuel tank but it may make the installation easier by doing so.
- 3 Mount the PC6 to the inner rear fender behind the air box.
- 4 Route the harness towards the front of the bike along the left hand frame tube.



- 5 Unplug the stock wiring harness from each of the 4 fuel injectors.  
  
This image only shows the #3 and #4 fuel injectors. You will need to also remove the harness from #1 and #2.



- 6 Plug the PC6 wiring harness in-line of the stock harness and the fuel injectors.

PC6 harness:

ORANGE - cylinder #1 (left).

YELLOW - cylinder #2.

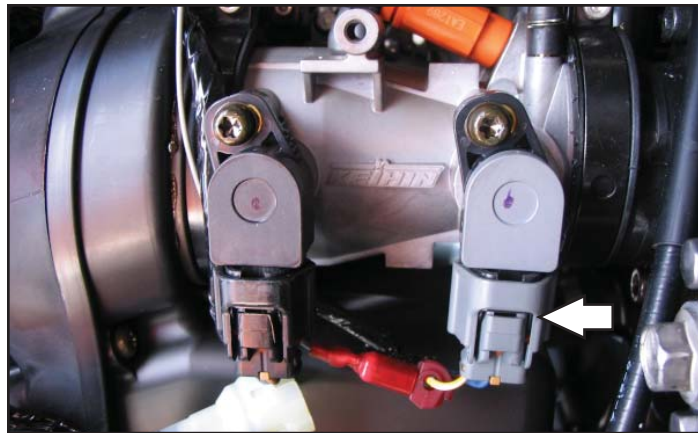
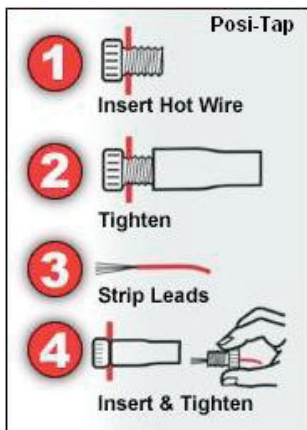
GREEN - cylinder #3.

BLUE - cylinder #4 (right).

- 7 Locate the Throttle Position Sensor connector.

This connector is located on the right hand side of the throttle bodies and is GREY in color.

- 8 Using the supplied Posi-tap attach the GREY wire of the PC6 to the YELLOW/WHITE wire of the TPS harness.



This connection can be made further up the harness to make it less noticeable if desired.

The wire tap shown is NOT a Posi-tap. It is an older crimp-on style wire tap.

- 9 Attach the ground wire from the PC6 to the stock ground wire next to the thermostat housing.
- 10 Reinstall fuel tank, bodywork, and seats.


Download the latest map files from our web site at [dynojet.com/tunes](http://dynojet.com/tunes).

#### Optional inputs:

**Speed Input** - PINK wire of speed sensor. Located on engine case above the front sprocket cover.

**Engine Temperature** - BLUE/WHITE wire of temp sensor on thermostat housing located under fuel tank.





**PUSH  
THE  
LIMIT**

**2191 MENDENHALL DRIVE, NORTH LAS VEGAS, NV 89081 - 800-992-4993 - DYNOJET.COM**  
**© 2007-2022 DYNOJET RESEARCH ALL RIGHTS RESERVED**