

POWER COMMANDER 6

Install guide for: PC6-16067

Model coverage:

2016-2018 Honda CB500

2016-2018 Honda CBR500R

PARTS LIST



- | | |
|--------------------------|-----------------|
| 1 POWER COMMANDER 6 | 2 VELCRO STRIPS |
| 1 INSTALLATION GUIDE | 1 ALCOHOL SWAB |
| 1 USB CABLE | 1 POSI-TAP |
| 2 DYNOJET DECALS | 1 ZIP TIE |
| 2 POWER COMMANDER DECALS | |

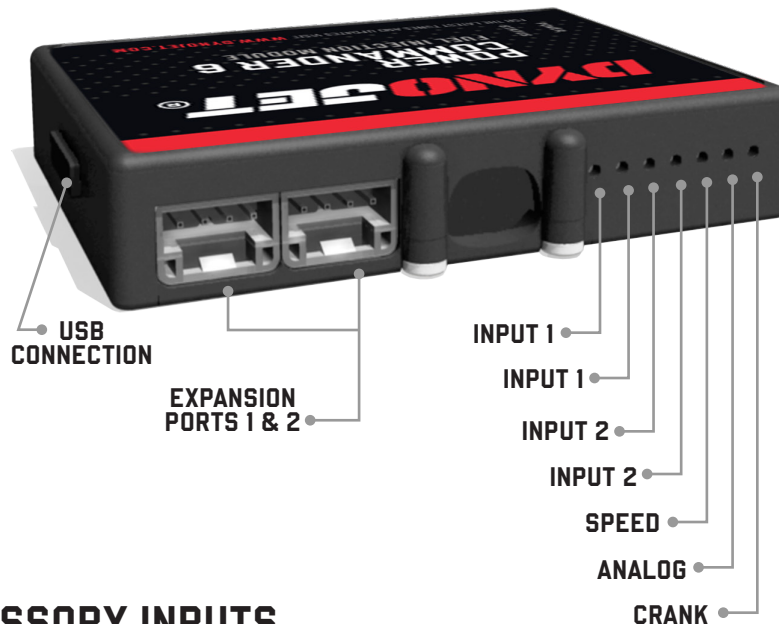
**PLEASE READ ALL DIRECTIONS BEFORE STARTING INSTALLATION.
THE IGNITION MUST BE TURNED OFF BEFORE INSTALLATION.**



IPC6-16067.01



INPUT ACCESSORY GUIDE



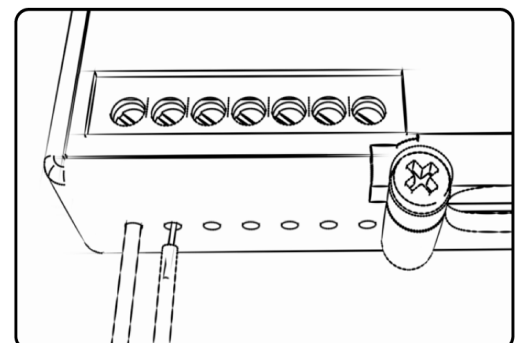
OPTIONAL ACCESSORY INPUTS

- Map** (Input 1 or 2) The PC6 has the ability to hold 2 different base maps. You can switch on the fly between these two base maps when you hook up a switch to the MAP inputs. You can use any open/close type switch. The polarity of the wires is not important.
- Shifter** (Input 1 or 2) Used for clutch-less full throttle upshifts. Insert the wires from the Dynojet quick shifter into either Input 1 or Input 2. The polarity of the wires is not important. Set to Input 2 by default.
- Speed** If your application has a speed sensor then you can tap into the signal side of the sensor and run a wire into this input. This will allow you to calculate gear position in the Control Center Software. Once gear position is setup you can alter your map based on gear position and setup gear dependent kill times when using a quickshifter. .
- Analog** This input is for a 0-5v signal such as engine temp, boost, etc. Once this input is established you can alter your fuel curve based on this input in the Power Core software.
- Launch** You can connect a wire to either Input 1 or Input 2 and then the other end to a switch. This switch when engaged (continuity) will only allow the RPM to be raised to a certain limit (set in the software). When released, you will have full RPM.

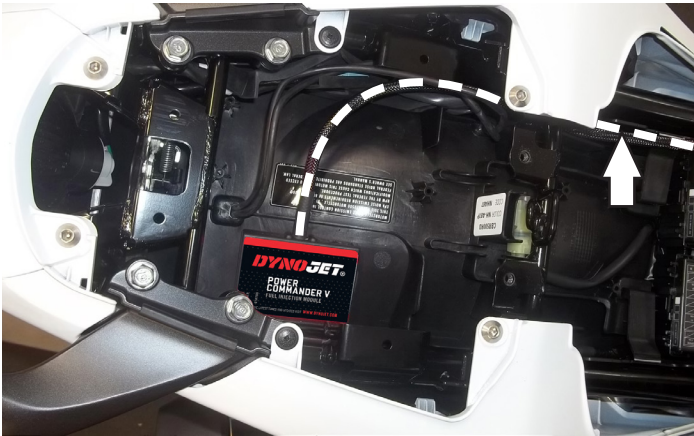
WIRE CONNECTIONS

To input wires into the PC6 first remove the rubber plug on the backside of the unit and loosen the screw for the corresponding input. Using a 22-24 gauge wire, strip about 10mm from its end. Push the wire into the hole of the PC6 until it stops and then tighten the screw. Make sure to reinstall the rubber plug.

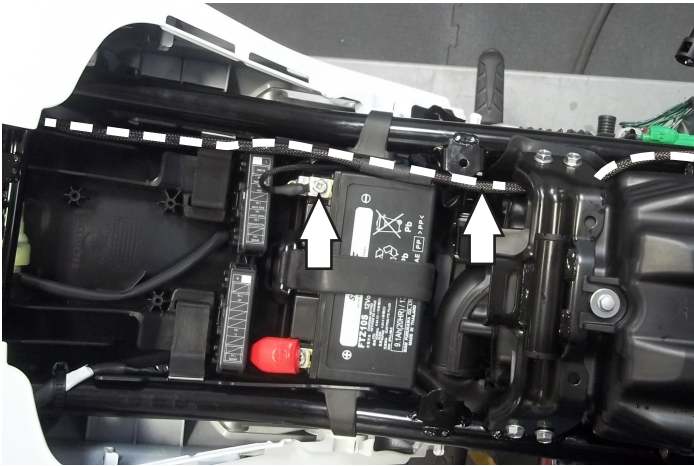
NOTE: If you tin the wires with solder it will make inserting them easier.



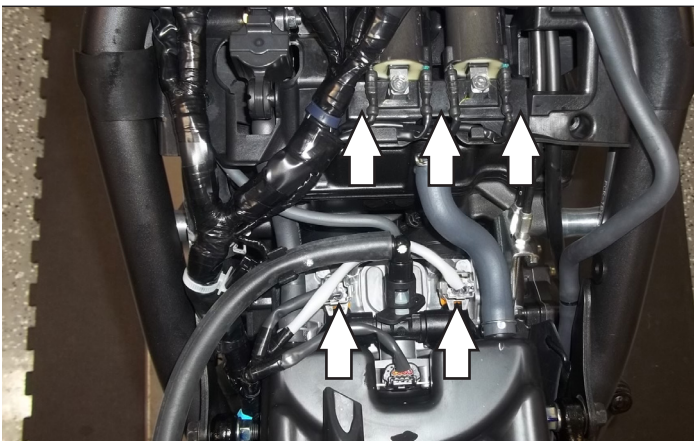
INSTALLING THE POWER COMMANDER 6



- 1 Remove the main seat, passenger seat and both side panels.
- 2 Remove the right hand fairing.
- 3 Prop the fuel tank up.
- 4 Lay the PC6 in the tail section temporarily and route the harness down the left side of the tail section.



- 5 Attach the ground wire from the PC6 to the negative terminal of the bike's battery.
- 6 Route the PC6 harness to the inside of the fuel tank bracket.



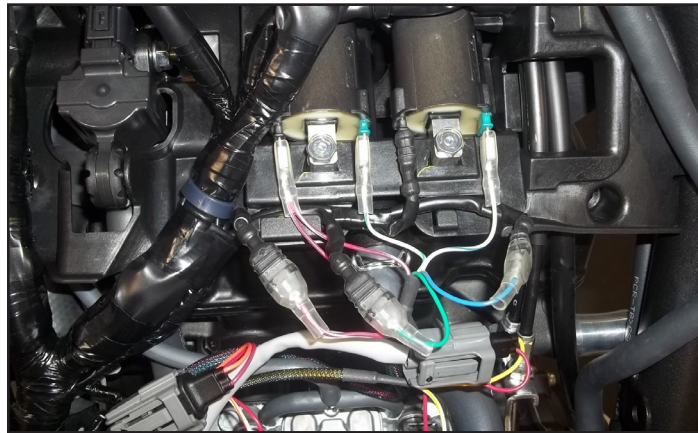
- 7 Unplug the stock wiring harness from each fuel injector.
- 8 Unplug the stock wiring harness from the ignition coils.

- 9 Plug the PC6 wiring harness in-line of the stock wiring harness and ignition coils.

The pair of PC6 coil leads with GREEN colored wires will go in-line with the #1 (left) coil.

The pair of PC6 coil leads with BLUE colored wires will go in-line with the #2 coil.

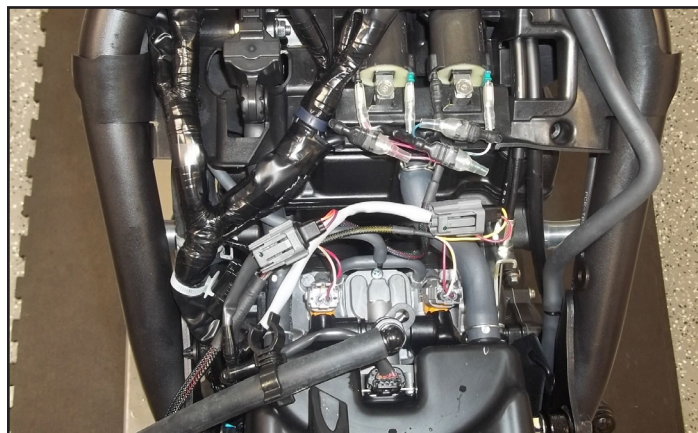
The pair of PC6 injector leads with RED colored wires will go in-line with the 12v side of either coil. This is designated by the BLACK marking on the stock coil.



- 10 Plug the PC6 wiring harness in-line of the stock wiring harness and fuel injectors.

The pair of PC6 leads with ORANGE colored wires will go in-line with the #1 (left) injector.

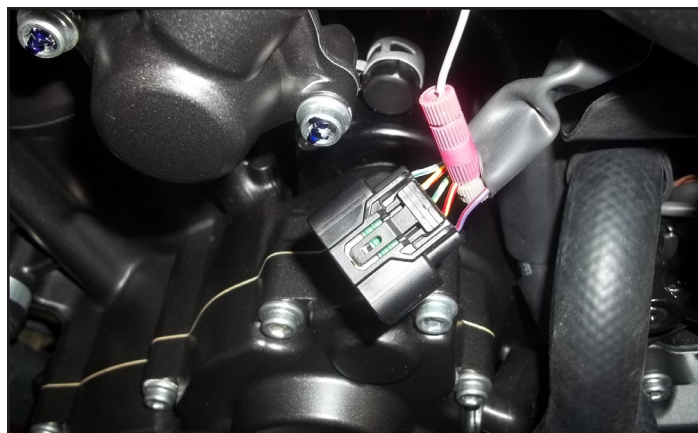
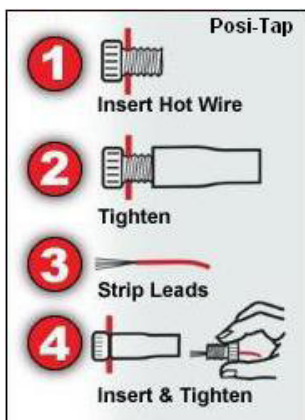
The pair of PC6 leads with YELLOW colored wires will go in-line with the #2 injector.



- 11 Unplug the stock wiring harness from the Throttle Position Sensor.

This connection is on the left side of the throttle bodies.

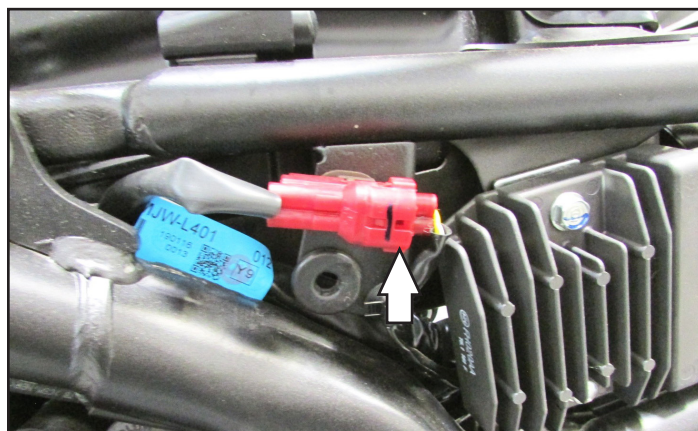
- 12 Use the supplied Posi-tap to attach the GREY wire of the PC6 to the RED/YELLOW wire of the stock TPS connector.



- 13 Plug the stock connector back on to the TPS.

- 14 Unplug the stock Crank Position Sensor connector.

This is a RED 2-pin connector located on the left side of the sub-frame.





- 15 Plug the PC6 in-line of the stock CPS connectors.
- 16 Reinstall the fuel tank, the removed bodywork, and the seats.
- 17 Affix the supplied CARB E.O. label to a conspicuous area. The best location is next to the original emissions label. Make sure to clean the surface before attaching the label.

Download the latest map files from our web site at dynojet.com/tunes.



PUSH THE LIMIT

**2191 MENDENHALL DRIVE, NORTH LAS VEGAS, NV 89081 - 800-992-4993 - DYNOJET.COM
© 2016-2021 DYNOJET RESEARCH ALL RIGHTS RESERVED**