

POWER COMMANDER 6

Install guide for: PC6-16083

Model coverage:

2019-2020 Honda CB500F

2019-2020 Honda CB500X

2019-2020 Honda CBR500R

PARTS LIST



- | | | | |
|---|--------------------|---|------------------------|
| 1 | POWER COMMANDER 6 | 2 | POWER COMMANDER DECALS |
| 1 | INSTALLATION GUIDE | 2 | VELCRO STRIPS |
| 1 | USB CABLE | 1 | ALCOHOL SWAB |
| 2 | DYNOJET DECALS | 1 | EO LABEL |

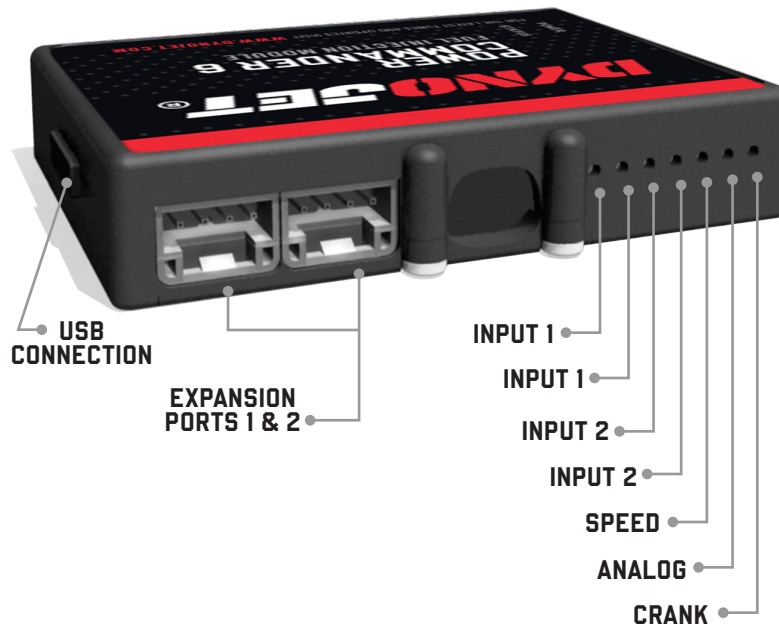
**PLEASE READ ALL DIRECTIONS BEFORE STARTING INSTALLATION.
THE IGNITION MUST BE TURNED OFF BEFORE INSTALLATION.**



IPC6-16083.01



INPUT ACCESSORY GUIDE



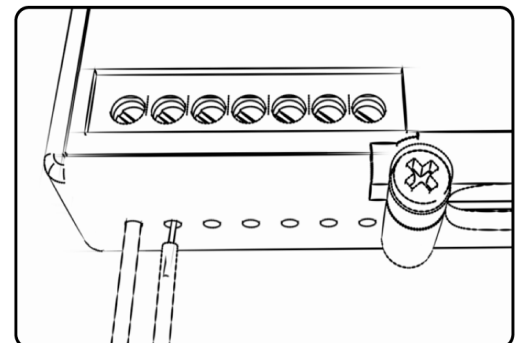
OPTIONAL ACCESSORY INPUTS

- Map** (Input 1 or 2) The PC6 has the ability to hold 2 different base maps. You can switch on the fly between these two base maps when you hook up a switch to the MAP inputs. You can use any open/close type switch. The polarity of the wires is not important.
- Shifter** (Input 1 or 2) Used for clutch-less full throttle upshifts. Insert the wires from the Dynojet quick shifter into either Input 1 or Input 2. The polarity of the wires is not important. Set to Input 2 by default.
- Speed** Not needed on Harley applications as the speed signal wire is built into the main wiring harness of the PC6.
- Analog** This input is for a 0-5v signal such as engine temp, boost, etc. Once this input is established you can alter your fuel curve based on this input in the Power Core software.
- Launch** You can connect a wire to either Input 1 or Input 2 and then the other end to a switch. This switch when engaged (continuity) will only allow the RPM to be raised to a certain limit (set in the software). When released, you will have full RPM.

WIRE CONNECTIONS

To input wires into the PC6 first remove the rubber plug on the backside of the unit and loosen the screw for the corresponding input. Using a 22-24 gauge wire, strip about 10mm from its end. Push the wire into the hole of the PC6 until it stops and then tighten the screw. Make sure to reinstall the rubber plug.

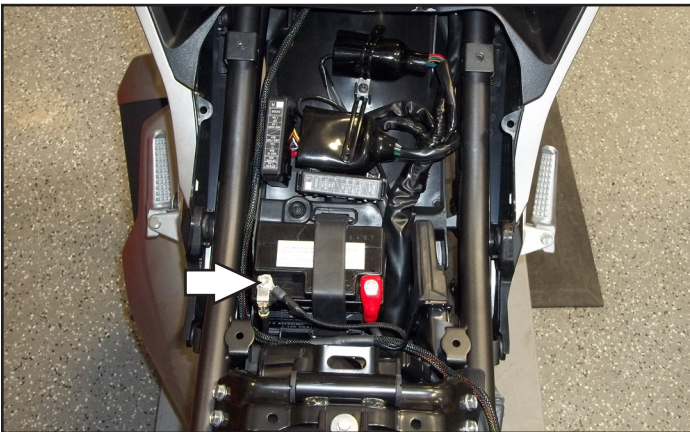
NOTE: If you tin the wires with solder it will make inserting them easier.



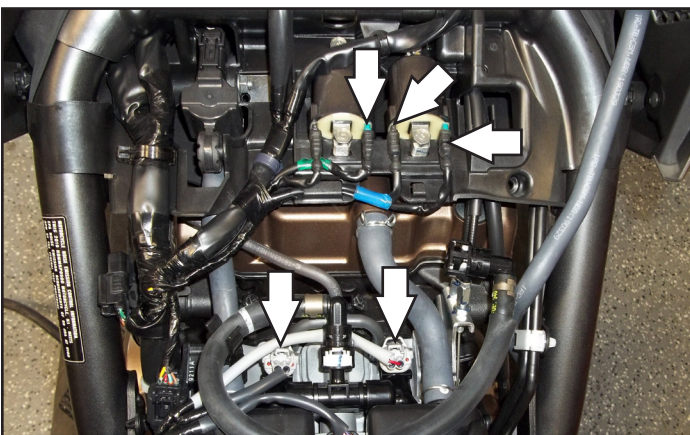
INSTALLING THE POWER COMMANDER 6



- 1 Remove the seats and the fuel tank.
- 2 Install the PC6 in the tail section and route the harness down the side of the bike towards the air box.

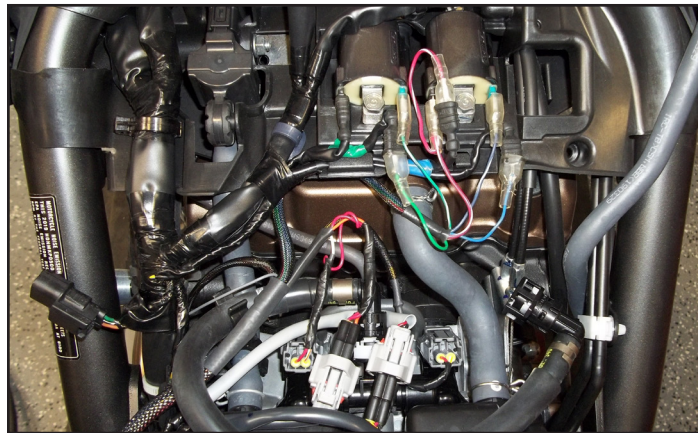


- 3 Attach the ground wire of the PC6 to the negative (-) side of the battery.



- 4 Unplug the stock wiring harness from the injectors
- 5 Unplug the stock wiring harness from the Ignition coils.

- 6 Plug the PC6 in-line of the stock injectors and wiring harness.
PC6 ORANGE colored wires go to cylinder #1 (left).
- 7 Plug the PC6 in-line of the stock ignition coils and wiring harness.
PC6 GREEN wires go to the signal side (GREEN tab) for cylinder #1 (left coil).
PC6 BLUE wires go to the signal side (GREEN tab) for cylinder #2 (right coil).
PC6 RED wires go to the 12v side (BLACK tab) of either coil.



- 8 Unplug the crank position sensor.

This connector is located on the left hand side engine cover.

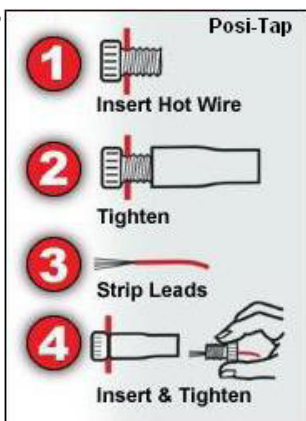


- 9 Plug the PC6 wiring harness in-line of the CPS and the stock wiring harness.



- 10 Use the supplied Posi-tap, to attach the PC6 single unterminated GREY wire to the stock RED/YELLOW wire of the TPS connector. This is the second wire from the left as shown in this pic

The TPS is located on the left side of the throttle body.



- 11 Affix the supplied CARB E.O. label to a conspicuous area. Next to the original emissions label is the preferred location. Make sure to clean the surface before attaching.

Download the latest map files from our web site at dynojet.com/tunes.





PUSH THE LIMIT

2191 MENDENHALL DRIVE, NORTH LAS VEGAS, NV 89081 - 800-992-4993 - DYNOJET.COM
© 2019-2022 DYNOJET RESEARCH ALL RIGHTS RESERVED