



● Thank you for purchasing the our product. Before installing, please read the instruction carefully and keep it for future reference.

## ⚠ Attention!

- For installation, please follow the steps described in manual. Any damage caused by wrong installation shall be imputed to the users.
- Don't break or modify the wire. To avoid the short circuit, please don't pull the wire when installing.
- Do not disassemble or change any parts excluding the manual description.
- The interior examination or maintenance should be executed by our professionals.

◎ MARK MEANING:

**NOTE** You could get the installation details from the information behind the mark.

△ Some processes must be followed to avoid the affection caused by wrong installation.

⚠ **WARNING!** Some processes must be followed to avoid damages to yourself or the public.

⚠ **CAUTION!** Some processes must be followed to avoid the damage to the vehicle.

## 1 Accessories

**1** Signal & Taillight x2



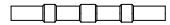
**2** M6 Plastic washer x2



**3** M6xP1.0 Plastic nut x2

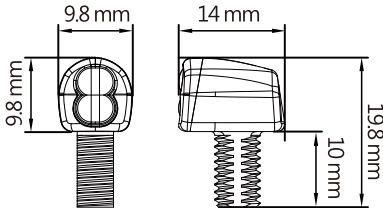


**4** Heat shrink tube x8



**NOTE** Contact your local distributor, if the items received in the box are not the same as the items listed above.

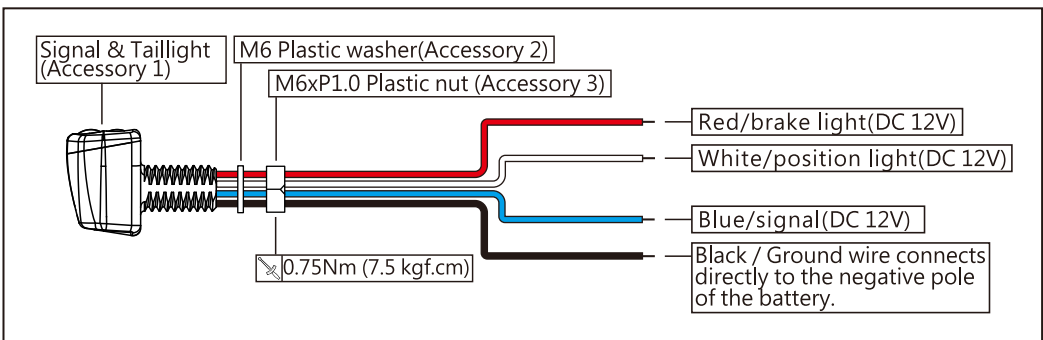
## 2 Specification



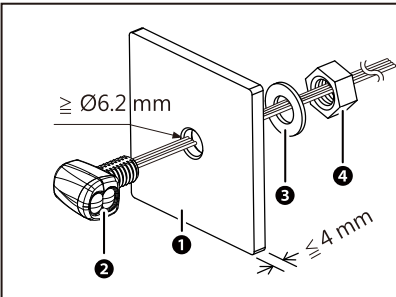
- Effective temperature range -10 ~ 60 °C
- Water-Proof Standard JIS D 0203
- Effective voltage DC 12 V
- Size 9.8x14x19.8 mm
- Weight About 6.5 g

**NOTE** Any design and specification changes, will not be notify.

## 3 Wiring Installation Instructions



## 4 Practical Installation Instruction



Please, follow the steps below.

1 Please use proper tool to drill a hole on the correct position of the casing/fairing.

⚠ Required body thickness  $\leq 4$  mm, to avoid insufficient torque of the nut.

**NOTE** Required drilling size  $\geq 6.2$  mm, to avoid failing for insertion.

2 Signal & Taillight (Accessory 1)

3 M6 Plastic washer (Accessory 2)

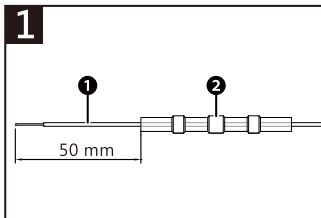
4 M6xP1.0 Plastic nut (Accessory 3)

⚠ **WARNING!** Please use the washer and the nut provided by KOSO. Please do not use the metal nut, which may exceed the maximum torque value and cause damages of the light.

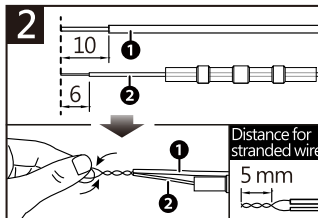
⚠ **CAUTION!** Please perform the real vehicle installation before the wiring installation to avoid the wiring being unable to pass through the washer and the nut.

## 5 Installation Instruction

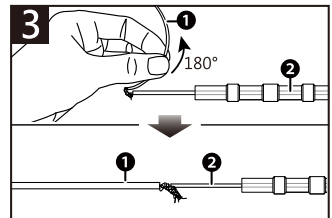
Follow the steps below during installation.



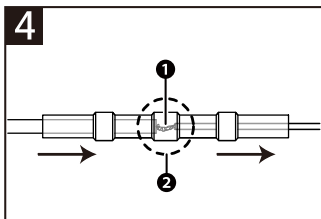
1. Insert the 1 main wiring through the 2 heat shrink tube for approximately 50mm.



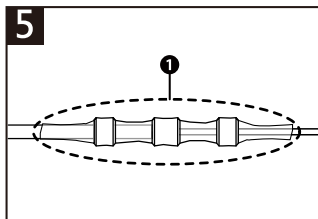
2. Align the 1 connecting wiring and the 2 main wiring and twist the wirings.



3. Pull the 1 connecting wiring to one direction to parallel with the 2 main wiring.



4. Pull the 1 twisted wirings to the 2 heat shrink tube (circled place).



5. Use proper tools to heat the 1 heat shrink tube.

⚠ Before executing Step 4, please make sure the wiring is correctly installed.

### NOTE

Heat shrink tube operating temperature range :

- Minimum shrink temperature : 60 °C
- Fully shrink temperature : 110 °C
- Solder melting temperature : 138 °C

## 6 Trouble Shooting

The following situation do not indicate malfunction of the meter. Please check the following points, before taking it in for repair.

Trouble	Check item
Signal, position light, and brake light not lit.	<ul style="list-style-type: none"> <li>● May be caused by a poor connection of the power line.                             <ul style="list-style-type: none"> <li>→ Please check if the power line is broken or disconnected.</li> <li>→ Check if the anode and the cathode are properly connected.</li> </ul> </li> <li>● May be caused by a wrong connection of the cathode.                             <ul style="list-style-type: none"> <li>→ Please check if the wirings are installed according to the normal polarity.</li> </ul> </li> </ul>

※If the problems still can't be solved, please contact your local distributor to get assistance.