



SSV WORKS, 201 N. Rice Ave Unit A, Oxnard, CA 93030
www.SSVworks.com | Phone: 818-991-1778 | Fax: 866-293-6751

RG4-US10

Polaris Ranger

Underseat 10" Subwoofer Enclosure

WARRANTY INFORMATION:

All SSV Works enclosures are covered by a limited lifetime warranty against defects in material or workmanship. All SSV Works Electronics are covered by a limited 1 year warranty against defects in material or workmanship. All SSV Works Speakers are covered by a limited 1 year warranty against defects in material or workmanship. Labor for replacement of defective components is not covered. Contact SSV Works for further warranty information.



Please read and understand these instructions completely before installation to avoid possible injury, or damage to the accessory or vehicle.

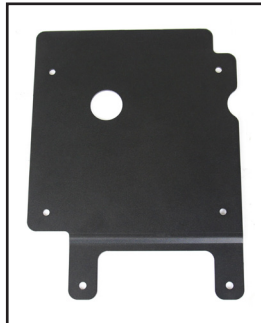
TOOLS NEEDED FOR INSTALLATION

- T-30 & T-40 Torx Driver - 4mm Allen Key - Panel Removal Tool - Drill - 1/32" Drill Bit

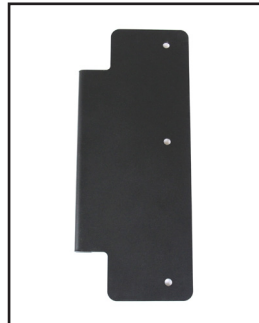
PARTS LIST IMAGES



1. RG4-US10 Enclosures



2. Enclosure Bracket A



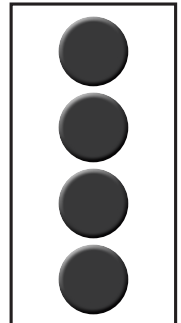
2. Enclosure Bracket B



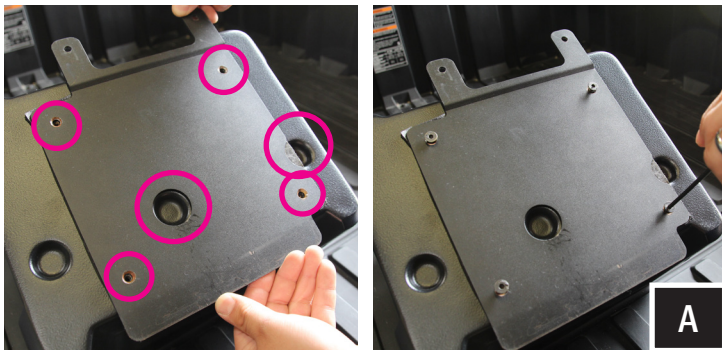
4. M6 Flathead 4mm Hex Screws x4



5. M6 Allen Torx Screws x5



5. Foam Circles x4



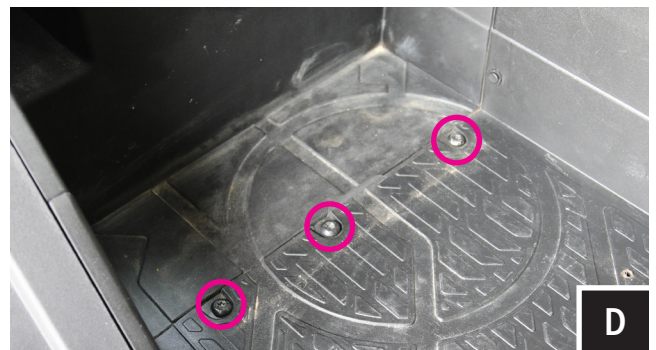
A. Align bracket A's holes with the dimples/recess' circled in pink on the bottom of the enclosure. Using four (4) flathead 4mm screws, mount the A bracket to the bottom of the enclosure. After the bracket is secure, cover the screw heads with the (4) foam circles.



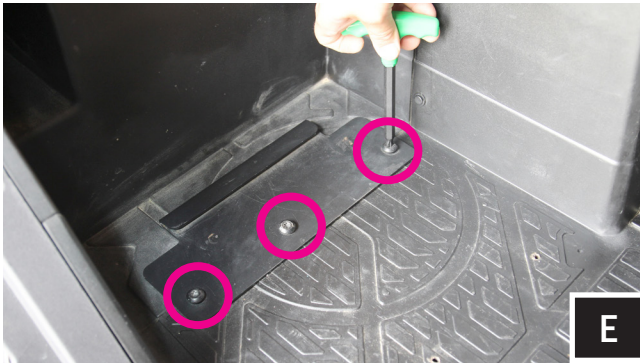
B. Flip up passenger seat and remove center tray to access battery. Disconnect the negative battery cable from the battery.



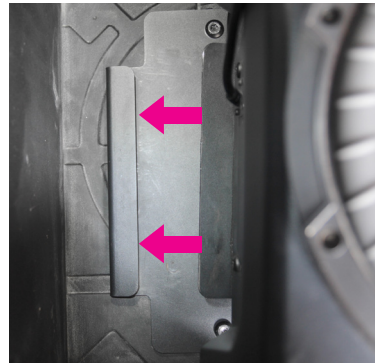
C. Using a panel removal tool, extract the (8) push pins to remove the center driveline center column cover.



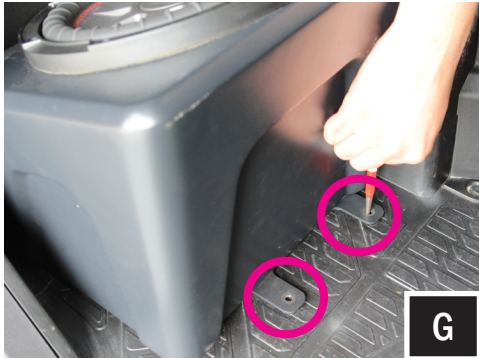
D. Located on the floorboard to the right of the battery compartment, remove the (3) T40 torx screws circled in pink.



E. Place SSV bracket B over the factory screw holes and refasten down with the (3) factory T40 torx screws removed in the previous step.



F. With the bracket secured to the floorboard, place the enclosure in front of the floorboard bracket. To allow proper engagement, tilt the enclosure back slightly and slide its bottom bracket into the floorboard bracket catch.



G. With the brackets seated into one another, use the front mounting tabs as a template to mark with a scribe or punch the needed placement to drill pilot holes.



H. Once marked, remove the enclosure. Using a 13/64" drill bit, drill pilot holes at your marked points. Be sure to penetrate through the chassis lying beneath the floorboard.



I. Re-install the sub-enclosure. Secure the front mounting tabs with the kit provide T30 torx self-tapping screws.



J. Connect sub to harness B-H1151



K. Pull the harness into the battery cavity.



L. Pull all cables and wiring around battery and through the center of vehicle away from any moving parts and sharp metal. Connect to the amplifier.

Connecting the RG4-US10 using the pre-installed, two-pin connector will require an optional SSV Works plug-&-play harness (WP-H1151 - sold separately). If you are not using the WP-H1151 harness, simply cut off the two-pin connector and follow the wiring instruction.

Reattach all factory panels

For proper sound, ensure the speaker polarity is correct connect the "+" to the "+" and the "-" to the "-" from the speaker wire to the amplifier. If using with an SSV Works complete system refer to the amplifier wiring instructions for more detailed wiring information.

