

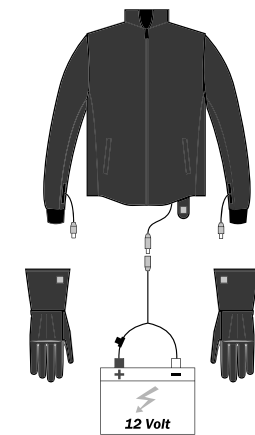
How to Connect Motorcycle Heated Clothing to the Included Harness

TO CONNECT HEATED VEST OR JACKET



1. Find the male end power cable from the lower inside pocket.
2. Plug the male plug from the jacket/vest into the Battery Harness.

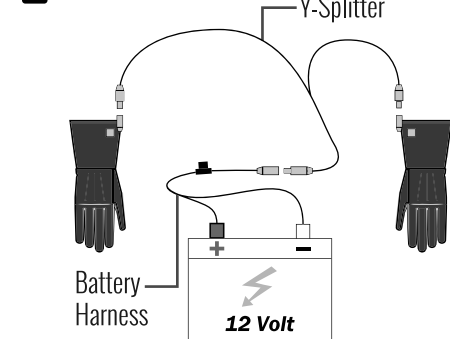
HEATED JACKETS ARE PRE-WIRED FOR GLOVES



1. Locate the cable from the lower inside pocket of the jacket liner
2. Remove the pre wire cable from each sleeve
3. Put on your (own) outer jacket
4. Put each glove on, then connect the cables to the corresponding power cable from the jacket liner sleeve.
5. Connect the jacket liner cable into the Battery Harness

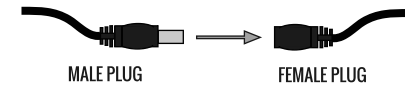
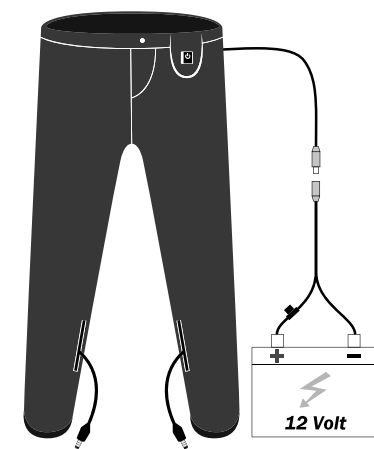
Each glove runs independently from the heated jacket. This means each glove can be set to different temperature settings than the jacket liner using its own controller.

Gloves Only Operation



1. Run the Gloves Y-Splitter through each sleeve of your outer motorcycle jacket.
2. Connect the male end of the harness into each glove.
3. Plug the Gloves Harness into Battery Harness (female end).

Heated Liner Pants Operation



1. Put the liner pants on before putting on your riding pants.
2. Pull the cable wire out from the pant liner's left pocket.
3. Connect the cable into the Battery Harness.
4. Leave the Temperature Controller tab outside your regular motorcycle pants.

JACKET LINER & LINER PANTS ARE DESIGNED AS MID-LAYERS THEY DO NOT HAVE BUILT-IN CRASH PROTECTION. PLEASE USE IN CONJUNCTION WITH PROPER PROTECTIVE RIDING OUTERWEAR FOR YOUR SAFETY.

How to Operate

1. Start your motorcycle before you turn on your heated gear.

2. **Turning it ON:**
Press and hold for 3 seconds to turn ON.



3. **Cycle Through Heat Settings:**
Press once after the LED light is on to cycle through 3 heat settings.



High (red)



Medium (yellow)



Low (green)

Note: There is a pre-heat function built into heated gear (jacket liner, vest, pant liner). After 5 minutes the heated gear (jacket liner, vest, pant liner) will automatically adjust to medium heat setting.

4. **Turning it OFF:**
Press and hold for 3 seconds to turn OFF.



Wash and Care Instructions

Heated Clothing (jacket liners, pants liners, and vests)

- Machine wash gentle cycle with cold water and mild laundry detergent
- Lay flat or hang dry

Heated Gloves

- Spot clean only



- Make sure all heated clothing is disconnected before washing
- When storing your heated gear, make sure it is dry and not exposed to direct sunlight

Available Accessories



SAE-Coax Adapter



Y-Splitter



Battery Harness Kit



24" Coax Extension

HOTWIRED USA Limited Warranty

Thank you for purchasing HOTWIRED products. This Limited Warranty applies to physical goods purchased from HOTWIRED and covers any defects in heated electronic components for two (2) years from the initial date of purchase from an authorized HOTWIRED dealer. This warranty is non-transferable and proof of purchase is required for warranty service. Damage to the heating system and parts resulting from accident fire, flood, misuse, or unauthorized service or negligence outlined in the instructions printed herein will void the warranty. Warranty does not cover commercial use, wear and tear of the garment, fabric, zippers and other accessories are not covered under this warranty. Under no circumstances will HOTWIRED or the manufacturer be liable for the incidental, consequential, or punitive damages (including water damage) resulting from the product, whether or not the product is found to be covered by this warranty. The warranty is only good within the United States of America.

HOTWIRED[®]
INTEGRATED HEATING SYSTEM

INSTRUCTION MANUAL

**12 VOLT MOTORCYCLE
HEATED CLOTHING**

Thank you for purchasing HOTWIRED 12V heated gear. We composed this manual to make sure you are aware of how to use your gear properly and the many advantages of our product features. Our 12V motorcycle heated gear can be interconnected and powered by a single battery harness from the vehicle. Read through this manual to learn more ways to optimize your heated gear.

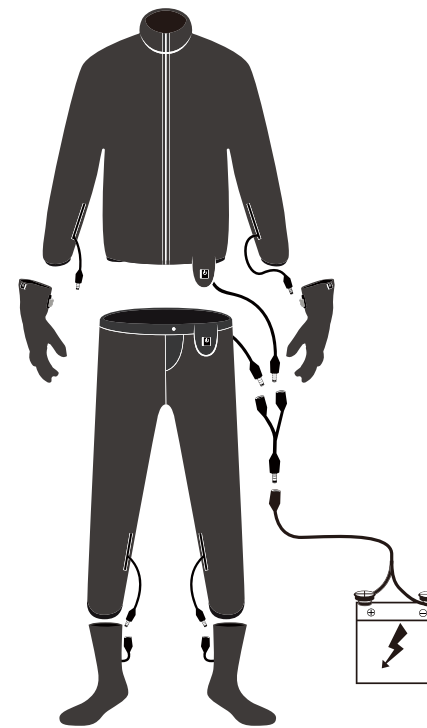
Table of Contents

- Table of Contents 1
- Interconnectivity, Safe Riding Tips..... 2
- Warning, Danger 3
- How to Connect the Battery Harness3- 4
- Battery Tender 4
- How to Connect Motorcycle Clothing to Harness 5
- How to Connect Gloves 5
- How to Connect Pant Liner 6
- How to Operate 6
- Wash Instructions7
- Available Accessories 7
- Warranty information 7



PUSH AND HOLD FOR 3 SECONDS TO TURN ON THE HEAT

Interconnectivity



1. Make sure you use the 15 Amp (blue) fuse.
2. Connect the gloves into the cables located in each sleeve of the jacket liner.
3. Use a Y-splitter (sold separately) to allow the jacket & pants liner to share the same harness.
4. Connect the insoles into the cables located at each leg of the heated liner pants.
5. Plug the Y-Splitter into the battery harness.
6. If both rider & passenger wish to use heated clothing, install a separate battery-harness for the passenger. (Verify with your dealer to make sure you don't exceed max Amperage for vehicle)

Safe Riding Tips

- Long exposure to the cold can lead to hypothermia, dehydration, and desensitization of the skin.
- Always check skin before, during, and after use.
- If you experience any irritation or burning sensation, stop using immediately.
- Check vehicle and road conditions before riding.
- Never ride when under the influence of drugs or alcohol.
- Always wear a base layer or undergarment when wearing HOTWIRED.
- Do not use this product if you are pregnant, disabled, or under the age of 18.
- If you have a prior health condition, check with your physician before use.
- Make sure that wiring does not interfere with vehicle operation.
- In case of emergency, call 911

Warnings

- Do not use third party products with HOTWIRED's products.
- Do not modify any of HOTWIRED's heated products or accessories.
- HOTWIRED is not liable for any damage caused by a third party accessory or by any product modification.
- If you are riding for an extended period of time, take breaks frequently. This will avoid overheating, especially when the heated product is touching bare skin.
- Do not use heated clothing if outside temperature is higher than 86°F (30°C).
- Immediately stop using heated product if you experience skin irritation or discomfort.
- Be sure to turn off heated clothing and unplug all wires before walking away from vehicle.
- If you have a small or older bike, consult your local dealership/mechanic to see if your bike has the proper amperage to support your heated clothing.

Danger

- Consult your doctor before using if you are pregnant, have a skin condition, or prior health condition.
- If there are any broken wires or parts, immediately stop using.
- Make sure your heated clothing is completely dry before operating.

How to Connect the Battery Harness to the Motorcycle

Warning:

Make sure your bike has enough amperage to support your heated clothing. Consult your manual, dealership, or mechanic before you connect it.



1. Locate your bike's battery



2. Using a 10mm wrench or screwdriver, loosen the bolts attached to the terminals. (Make sure not to touch both terminals at the same time)



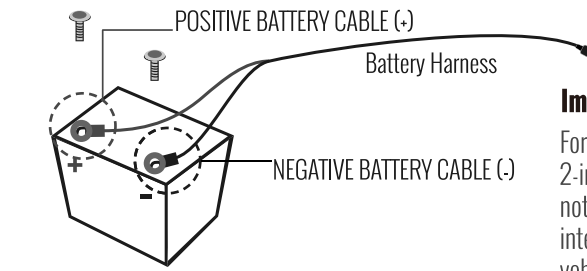
3. Once unfastened, connect the black harness cable to the negative battery terminal and tighten down to the manufacturer's specs.



4. Connect the red cable to the positive terminal and tighten down to the manufacturer's specs.



5. With the harness attached to the battery, the coaxial cable can be fastened to the frame using zip ties. You may run the cable next to the gas tank or out the left side of the seat. If run under the seat, make sure it's secure before riding.



Important:
For your safety, do not run more than 2-inches of wire out of the bike. When not using, make sure the wire doesn't interfere with any moving parts of the vehicle.

Battery Tender (SAE Connector) Adapter Harness Installation

Many vehicles come equipped with or may already have a battery tender harness installed. If you do not wish to use our included battery harness, we sell an optional SAE connector adapter. Simply connect the SAE adapter to the battery tender (SAE connector) and install the heated gear into the coaxial port of the adapter.



Fuse Selection Product Amperage Draw



ITEM	DRAW ^(on high)	FUSE
Heated Jacket	5-7 Amp (60-84W)	Brown Fuse (7.5 Amp)
Heated Jacket Liner Lite	Up to 3.5 Amp (42W)	Tan Fuse (5 Amp)
Heated Vest Liner	Up to 3.5 Amp (42W)	Tan Fuse (5 Amp)
Hybrid Heated Vest	1.2 to 1.5 Amp (15W)	Purple Fuse (3 Amp)
Heated Liner Pants	Up to 3.5 Amp (42W)	Tan Fuse (5 Amp)
Heated Gloves /Liner	Up to 1.5 Amp (18W)	Purple Fuse (3 Amp)
Heated Insoles	Up to 1 Amp (12W)	Purple Fuse (3 Amp)

Note: If your bike already has a battery harness for a battery tender, order a SAE Coax Adapter to connect your heated gear. If you use an SAE Adapter, check the amperage of the installed fuse and change fuse if necessary.