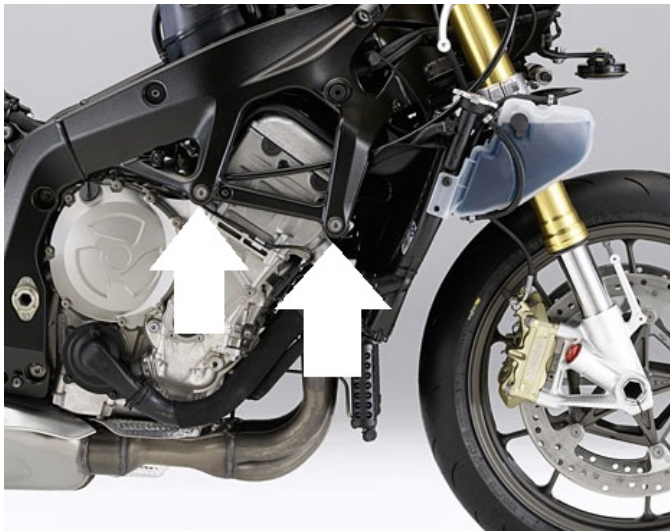


V3 FRAME SLIDERS KIT 2.0

BMW S 1000 R

year of production: '17-

product code: SR231

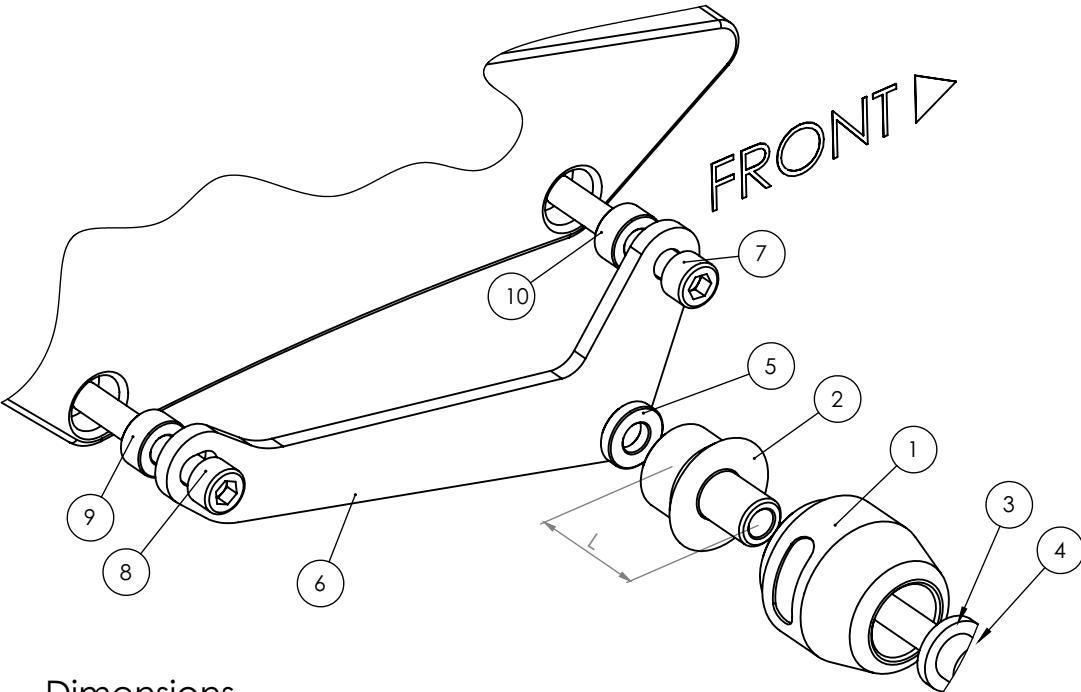


Assembly position
(both sides)

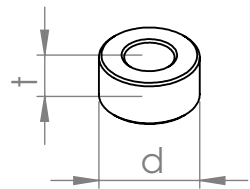
Assembly instructions

- 1. Please check the assembly positions on the image above. Remove the original bolts indicated with the arrow on the image above.
- 2. Replace the original bolts with the new mounting bolts (parts #7, #8), spacers (parts #9, #10) and metal adapters (parts #6) and put these parts in the right order shown on the assembly scheme on the right page. Put the adapters (parts #6) in the right positions according to the assembly scheme.
- 3. Assemble the sliders, round cylindrical body, the bolts, steel sleeve and the spacers (parts #1, #2, #3, #4 and #5) according to the drawing on the right page. Put them into the threaded holes in the adapter (part #6).

We suggest to use the threadlocker (eg. Loctite®) to make sure that the vibrations of the engine do not loosen the bolts.



Dimensions
of the spacers



Assembly scheme (both sides)

Part #	Part name	Left side (as You sit on the motorbike)	Right side
1	Slider	1 pcs.	1 pcs.
2	Round cylindrical body	L = 80 mm	L = 50 mm
3	Steel sleeve	1 pcs.	1 pcs.
4	Allen bolt (8,8 class)	M10x100 mm	M10x70 mm
5	Spacer	t = 20 mm, d = 5 mm	t = 20 mm, d = 5 mm
6	Adapter	Steel	Steel
7	Mounting bolt 1	M10x65 mm	M10x65 mm
8	Mounting bolt 2	M10x65 mm	M10x65 mm
9	Spacer 1	t = 20 mm, d = 10 mm	t = 20 mm, d = 10 mm
10	Spacer 2	t = 20 mm, d = 10 mm	t = 20 mm, d = 10 mm
11	Nut	-	-
12	Washer	2 pcs. to be put under the M10x65 mm bolts' heads	2 pcs. to be put under the M10x65 mm bolts' heads

Legal note. This product is a professional accessory to be used on the race track. Neither manufacturer, nor Seller take responsibility for any damages occurred despite of using protective accessories. For more information go to vortexracing.com