

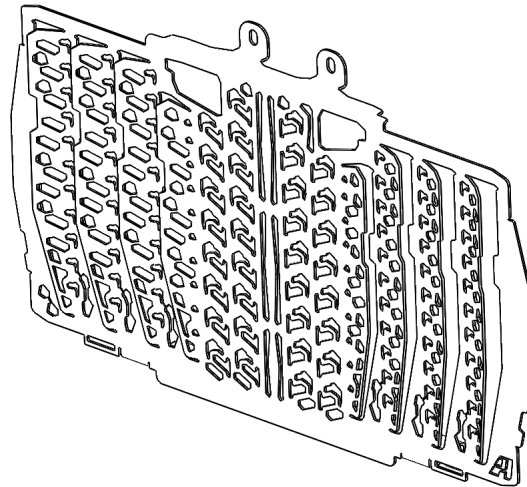


AltRider Radiator Guard for KTM 790 ADVENTURE R/S 2019 + INSTALLATION INSTRUCTIONS

Dear Rider,
Thank you for choosing AltRider! Whether a seasoned world adventurer or a first time ADV-Newbie, we welcome you to the AltRider experience. You can install your new product with the utmost confidence. AltRider designs, tests, and manufactures all of its products here in the United States. We are proud to do what we do, and honored to present to you the product of our labors.

Enjoy it, show it off, and most of all, RIDE IT!

Venture On,
Jeremy LeBreton



KTM 790 ADVENTURE R/S 2019+ Radiator Guard

Package Contents:
- Radiator Guard
- Instructions

AltRider LLC

Global

mailing: 4000 Aurora Ave N Ste 100
Seattle, WA 98103 USA
phone: 206-922-3618
email: info@altrider.com
web: www.altrider.com

Europe

mailing: Spectrumlaan 31
2665 NM Bleiswijk
Netherlands
email: info@altrider.eu
web: www.altrider.eu

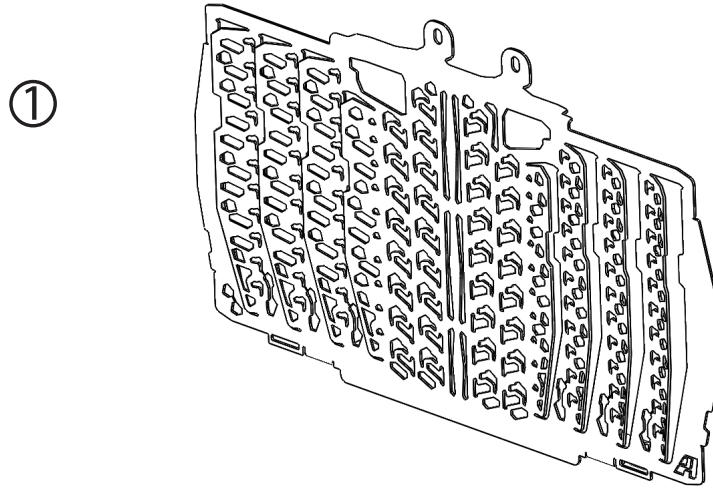
Rev 0
MADE IN THE USA





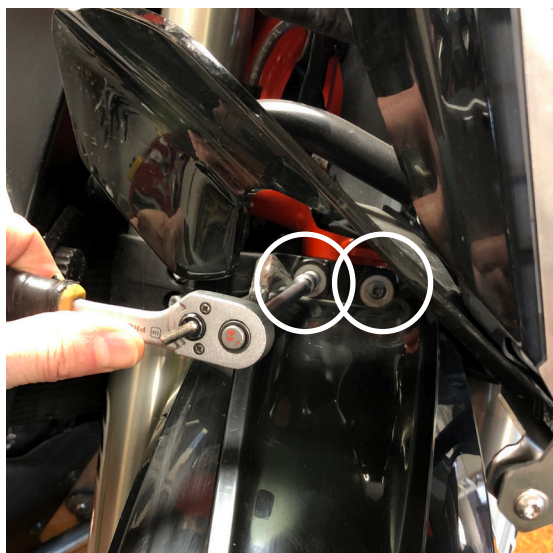
Tools necessary:

- ① T30 torx bit or driver

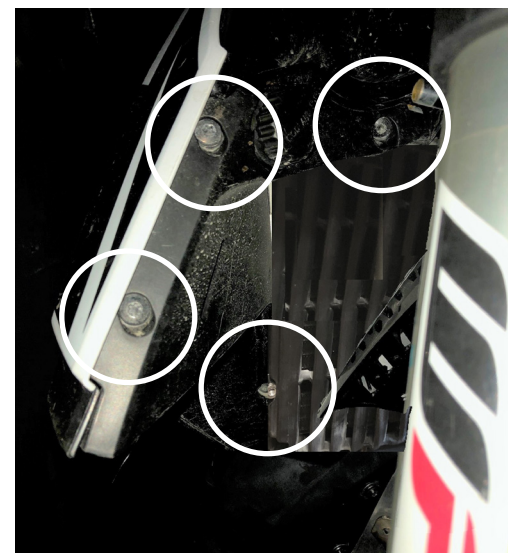


Kit:

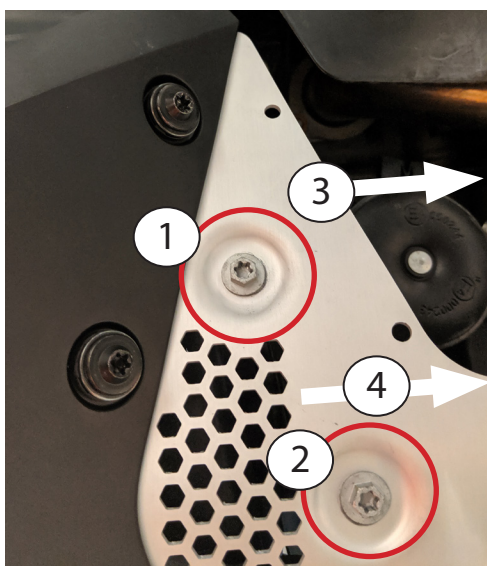
- ① Radiator Guard



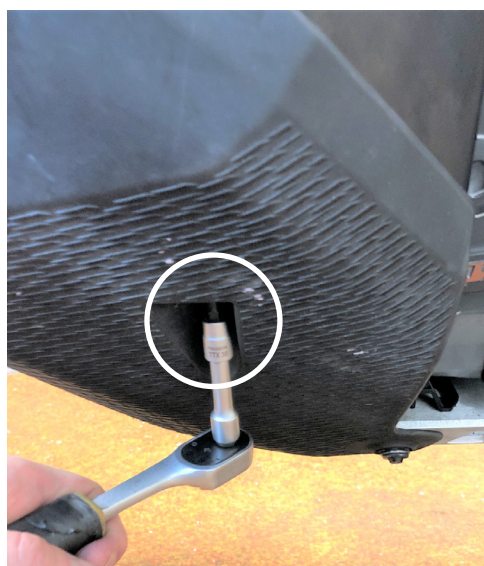
- ① Using the T30 driver, Remove 4 screws securing the fender (2 top, 2 bottom)



- ② Remove the Left and Right inner shrouds: 4 T30 screws each side



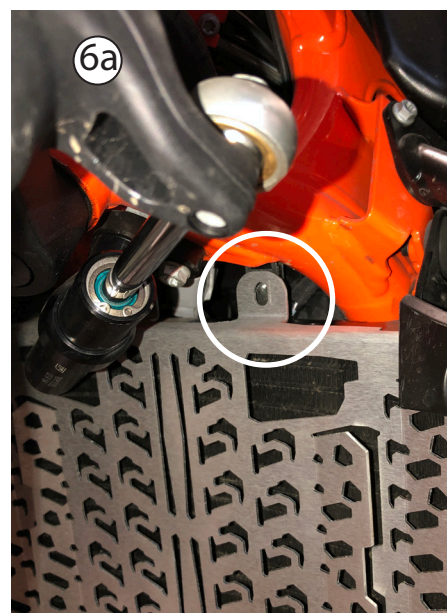
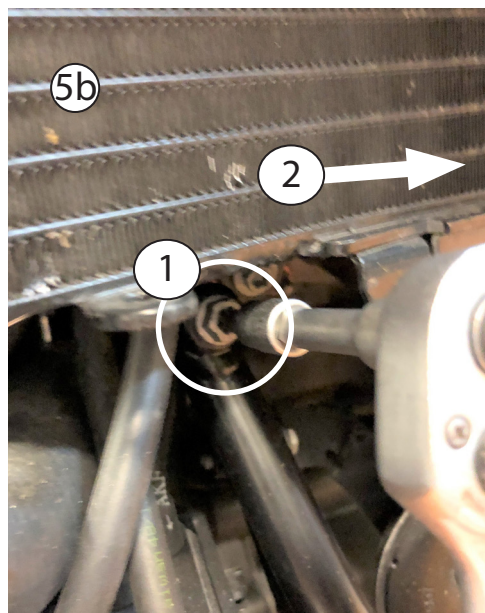
- ③ Remove the skid plate and tank guards: Remove four T30 screws on the front of the skid plate and two T30 screws underneath the skid plate at the very rear. Remove the tank breather from the right tank guard. Support the skid plate and remove the T30 screws from the left and right tank guard. Your tank guard and skid plate will now be free from the bike



- ④ Turn the front wheel to the right and remove the top left radiator guard T30 securing screw. Repeat for the right screw. Straighten the wheel and then push the shrouds away and lift the bottom of the radiator guard so it's free and remove it



⑤a Carefully unclip the fuel line from the skid plate sub-frame. Remove the skid plate sub-frame. ⑤b



⑥a Position the radiator guard so that the top tabs align with the mounting holes and so that the bottom radiator tabs fit through the slots on the bottom of the radiator guard as shown. Install the top screws loosely securing the radiator guard. ⑥b



PRO TIP: It may be helpful to slightly bend the bottom of the radiator guard so that it conforms to the radiator curve.



⑦ Position the sub-frame mounting boss behind the radiator guard mounting tab and insert the screw through both and thread it into the frame hand tight. **PRO TIP:** Press the radiator guard mounting tab towards the back of the bike to make it easier to thread the screw. Repeat for the other side. Tighten both screws to 18 NM. Tighten the top screws to 12 NM.



CONGRATULATIONS!

**You've completed your installation.
If at any point you have questions
about your installation or have any
feed back for us, we'd love to hear it.
A downloadable version of these
instructions can be found at our web
site. www.AltRider.com**

Global Office:

email: info@AltRider.com
phone: +1 206-922-3618
address: 4000 Aurora Ave N
Ste 100
Seattle, WA 98103

Europe Office:

mailing: Spectrumlaan 31
2665 NM Bleiswijk
Netherlands
email: info@altrider.eu
web: www.altrider.eu

TERMS OF USE, WARRANTY AND LIABILITY WAIVER

AltRider LLC, a Washington company, having its principal place of business in Seattle, WA ("AltRider") offers its motorcycle accessories (the "Product") with the terms, conditions and notices as follows:

Terms of Use

This Product is offered to you conditioned upon your acceptance without modification of the terms, conditions, and notices contained herein. Installation and/or use of this product implies acceptance of all such terms, conditions, and notices. If you do not agree to these terms, do not buy the Product. If you have already bought the Product and do not agree to these terms, return this Product promptly including the packaging and all written materials, to AltRider.

Limitation of Liability and Warranty Disclaimer

You may return your merchandise for a full refund or exchange, less any original or return shipping fees under these conditions:

1. Only if the merchandise is in 100% factory condition. Original manufacturer's packaging and same condition as sold – original boxes, packaging material, instructions, documentation, parts, and attached tags.
2. Only unused, unscratched, uninstalled, undamaged merchandise will be accepted. Do not install equipment until you are sure you want to keep it. Package items carefully in protective materials before returning them. Never ship an item in its original manufacturers packaging – it will arrive damaged. Please use a postal box or other adequate packaging to ensure your return or exchange is not damaged on the way back to AltRider.com.

To read more about our exchanges and returns policy, on the web, navigate to www.altrider.com/index.php/symfony/exchangesAndReturns

Excepting the warranties stated in the preceding paragraph, AltRider hereby disclaims all other warranties and conditions with regard to the Product including all implied warranties and conditions of merchantability and fitness for a particular purpose. There are no warranties which extend beyond the description on the face hereof. AltRider does not warrant against damages or defects arising out of use or installation of the Product. Installation instructions are provided for your convenience. AltRider is not responsible for any damages arising out of the installation, improper or otherwise, of the Product. No warranty of any kind, expressed or implied, is made regarding the safety of this Product.

To the extent allowed by law, AltRider shall not be held liable for any direct, indirect, punitive, incidental, special or consequential damages arising out of, or connected with, the use or misuse of this Product. Buyer assumes all risks and liability arising from use of this Product.

Entire Agreement

This document states the entire obligation of AltRider with respect to the Product. If any part of this agreement is determined to be void, invalid, unenforceable or illegal, including, but not limited to the warranty disclaimers and liability limitations set forth above, then the remainder of the agreement shall remain in full force and effect.

Applicable Law

This agreement is governed by the laws of Washington, USA. You hereby consent to the exclusive jurisdiction and venue of the courts of Washington, USA, in all disputes arising out of or relating to the use of this product.

