



YOSHIMURA

RESEARCH & DEVELOPMENT OF AMERICA, INC.

5420 DANIELS STREET STE A, CHINO CA., 91710 · (800) 634-9166 · (909) 628-4722 · FAX (909) 591-2198

www.yoshimura-rd.com

Street Series

Qualified Manufacturer Declared "Replacement Part"

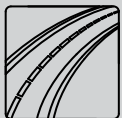
2006-2017

Yamaha YZF-R6

13630BP520 (SS/CF)

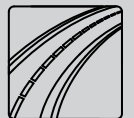
13630MP720 (TI/CF)

Alpha Taper Slip-On



All Street Series systems are:

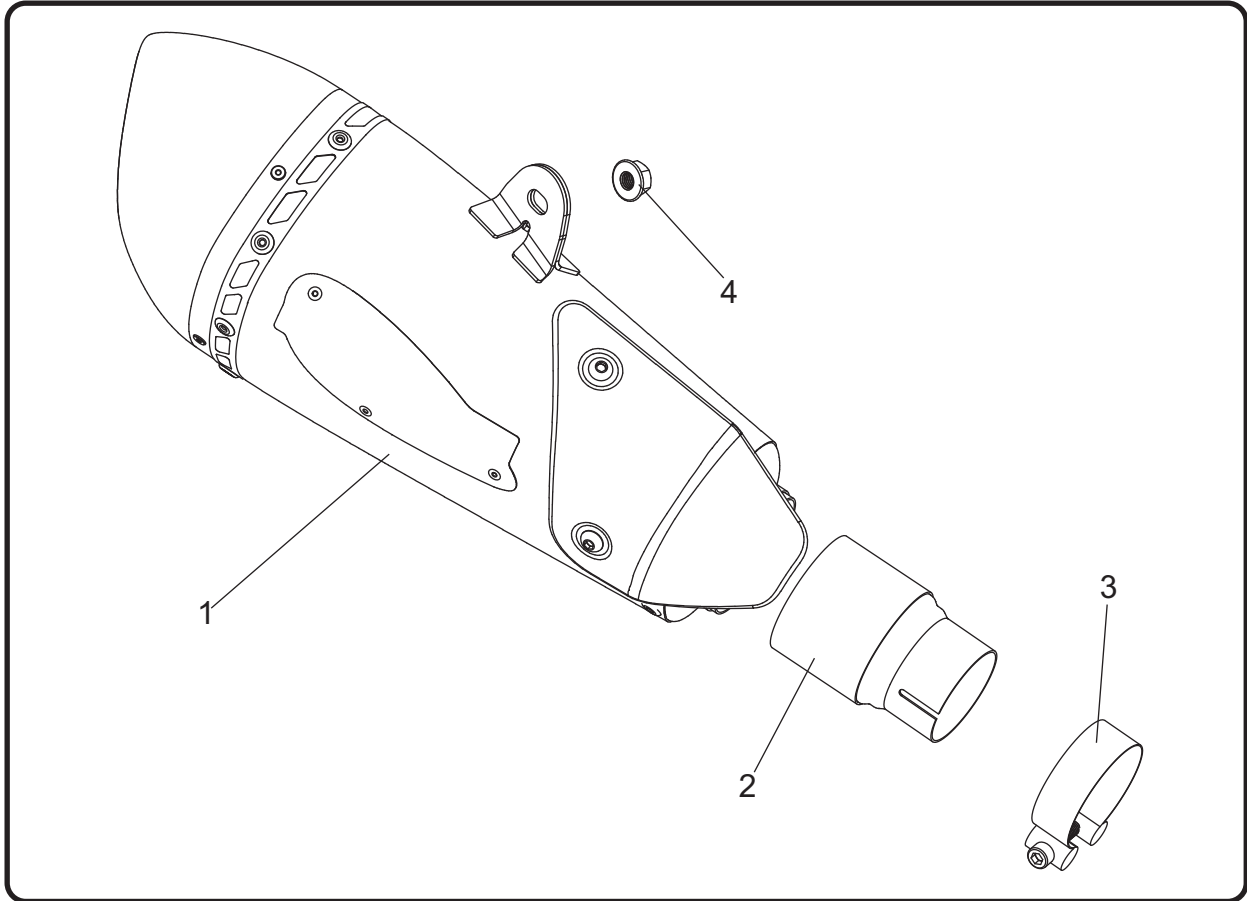
- Slip-on/Bolt-on applications that do not require tampering with the vehicle's emissions control system.
- CARB/EPA tail-pipe emissions compliant.
- Marked with appropriate EPA noise labels.
- Not tested for EPA new vehicle noise compliance.



✘ You must know how to remove and replace your stock exhaust in order to install this product otherwise have it installed by a professional mechanic. Keep all stock parts from your existing system as some components may be necessary to install your new Yoshimura exhaust depending on the application. Read through all instructions before beginning installation. Exhaust system can be extremely hot. Let motorcycle cool down before beginning installation. Always wear hand and eye protection and take precautionary measures to avoid injury. ✘

NOTE: IN THE STATE OF CALIFORNIA, IT IS ILLEGAL TO MODIFY THE EMISSION CONTROL SYSTEM, WHICH INCLUDES THE CARBURETORS OF ANY VEHICLE.

Assembly Diagram



No.	Item	Description	Qty.
1	13630BP520-RMA	Yoshimura Stainless Steel Muffler	1
	13630MP720-RMA	Yoshimura Titainum Muffler	
2	13630-ADP-SS	Yoshimura Stainless Steel Tailpipe	1
	13630-ADP-TI	Yoshimura Titainum Tailpipe	
3	27-61M	Barrel Band Clamp	1
4	8MMNUT	8mm Flange Nut	1
**	17029	Yoshimura Sticker Kit Sheet	1
**	INS-20-K	Alpha Sound Insert Kit	1

** Not shown on the diagram.

CAUTION: Exhaust system can be extremely hot. Let motorcycle cool down before beginning installation. Always wear hand and eye protection and take precautionary measures to avoid injury.

WARNING: Always properly support vehicle with a stand and/or lift when servicing or performing any work. Unstable vehicles may present dangerous conditions and may cause property damage and/or personal injury.

NOTE: Read through all instructions before beginning installation.

Removal

1. Remove right side fairing.
2. Remove the three bolts that secure the black muffler protector, exposing the exhaust valves and exhaust clamp.
3. Disconnect and remove the exhaust valve cables (refer to your service manual for complete removal instructions).

Note: Do not unplug servo motor. Unplugging the servo motor may cause the bike to run in a power limited fail safe mode.

4. Loosen the stock exhaust clamp
5. While securely supporting the stock muffler, remove the muffler mount bolt and carefully remove the stock muffler assembly by sliding toward the rear of motorcycle.

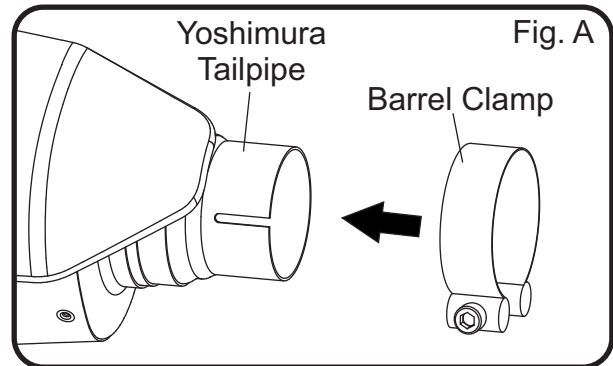
Note: The stock muffler clamp, exhaust gasket, and stopper ring will not be reused with Yoshimura Slip-On system.

Installation

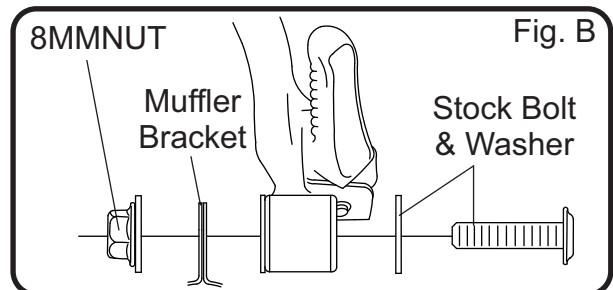
1. Confirm that (No. 2) 13630-ADP-SS/TI, Yoshimura tailpipe slot is facing the correct direction as shown in Assembly Diagram.

Note: The (No.2) 13630-ADP-SS/TI, Yoshimura tailpipe has a slight angle and it is critical that the slot is facing the correct direction for sufficient clearance between the muffler and swingarm.

2. Slide (No. 3) 27-61M, clamp over (No.2) 13630-ADP-SS/TI, Yoshimura tailpipe as shown in Fig. A.



3. Install (No. 1) muffler, onto the stock header outlet and align muffler bracket to the backside of the stock muffler mount bracket as shown in Fig. B.



4. Secure (No. 1) muffler, using the stock bolt, washer, and (No. 4) 8MMNUT, flange nut.
5. Torque muffler mount bolt to factory specification.
6. Torque (No. 3) 27-61M, exhaust clamp to 8.5 Nm (0.86 kg-m, 6 ft-lb).
7. Reinstall right fairing.
8. Before starting motorcycle, check for proper clearance between new exhaust system and rear suspension (i.e. tire, swing arm, brakes, rear shock, and etc.) If any problem is found, please carefully follow through the installation steps again. If problem still persists, please call Yoshimura Tech Department at (800) 634-9166 / in CA (909) 628-4722.
9. It is recommended that the muffler and tailpipe be wiped down with rubbing alcohol to remove oil and fingerprints. This will help prevent tarnishing of the finish after the exhaust is heated up.

Note: After starting motorcycle, it is normal for new exhaust system and muffler to emit smoke until oil residue burns off.