



YOSHIMURA

RESEARCH&DEVELOPMENT OF AMERICA, INC.

5420 DANIELS STREET STE A, CHINO CA. 91786 · (800)634-9166 · (909)628-4722 · FACSIMILE (909)591-2198

www.yoshimura-rd.com

PERFORMANCE EXHAUST SYSTEM

HONDA

02-03 CBR954RR

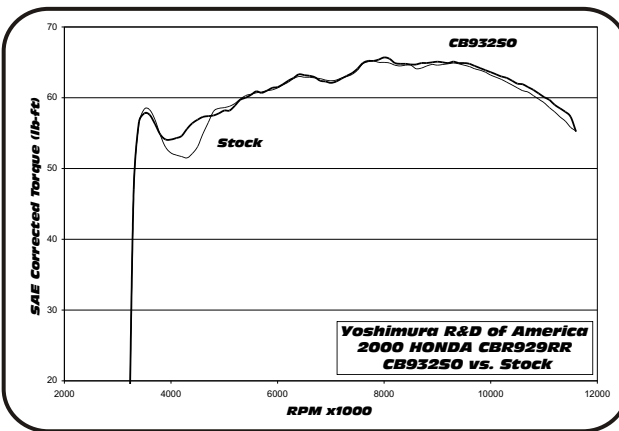
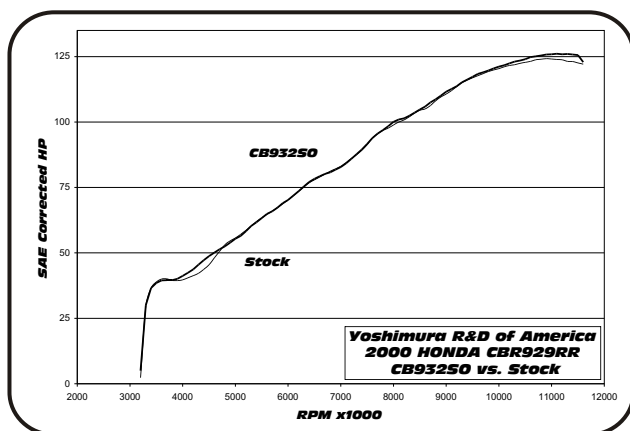
00-01 CBR929RR

CB930SOC

ZYCLONE BOLT-ON SYSTEM

CB93250

RACE ONLY BOLT-ON SYSTEM



Note: Dyno graphs are for comparison use only. Actual results may vary depending on operating and motorcycle condition.



THIS PRODUCT IS DESIGNED FOR USE IN CLOSED COURSE RACING AND IS NOT INTENDED FOR HIGHWAY USE.



NOTE: IN THE STATE OF CALIFORNIA, IT IS ILLEGAL TO MODIFY THE EMISSION CONTROL SYSTEM. WHICH INCLUDES THE CARBURETORS OF ANY VEHICLE.

Caution: Exhaust system can be extremely hot. Let motorcycle cool down before beginning installation.

Note: Read through all instructions before beginning installation.

Tools Needed:

12mm socket
3/8" ratchet and extension
12mm wrench
Torque wrench

Installation Steps:

- 1 Remove stock muffler and gasket.
- 2 Install new muffler gasket.
(Not supplied-Honda part no. 18291-MV400)
- 3 Install Yoshimura muffler using supplied bolts. Torque bolts to 2.3 kg-m (16.5 lb-ft)
- 4 Apply heat insulator to inside of muffler clamp and slide clamp onto muffler. (note direction of clamp in Fig. 2)
- 5 Mount clamp to stock muffler bracket using stock bolt, washer, and nut. (see Fig. 2)
Torque bolt to 2.5 kg-m (18 lb-ft)
- 6 Before starting, check for proper clearance between new muffler and motorcycle. (i.e. swing-arm, passenger foot-peg, rear wheel, etc.) If any problem is found, please carefully follow through the installation steps again. If problem still persists, please call Yoshimura tech. Dept. at (800)634-9166 / in CA (909)628-4722

Note: After starting motorcycle, it is normal for new muffler to smoke until oil residue burns off.



Fig. 1

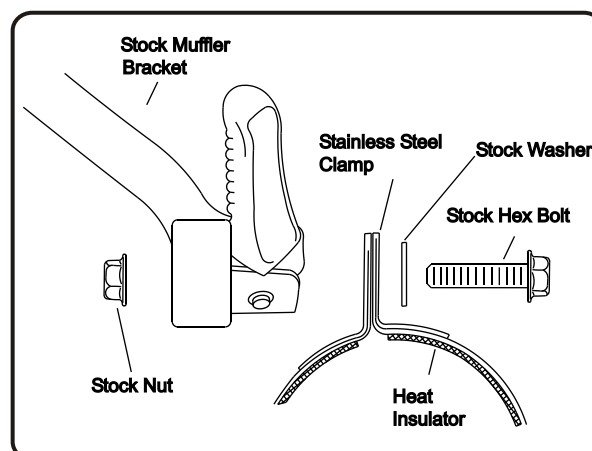
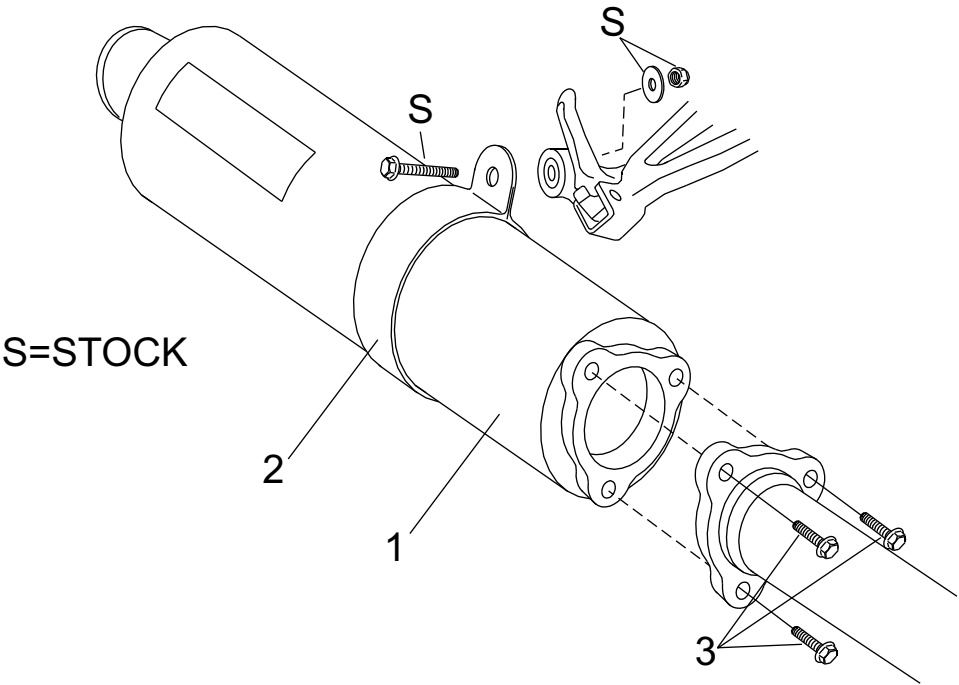


Fig. 2

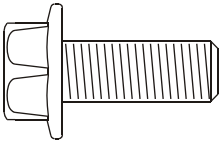
#CB930SOC/CB932SO



Parts Diagram

NO.	DESCRIPTION	QTY	PART #
1	Muffler Assembly	1	**
2	Stainless Steel Muffler Clamp	1	C500S8ASX
3	8 x 20mm Hex Head Bolt	3	M8X20H
**	5" Heat Insulator	1	HT SHLD5
**	Yoshimura Vinyl Sticker	1	17029

Nuts and Bolts Guide (Actual Size):



8mm x 20mm
Flange Hex Bolt