

26-0305 Under Fork Front Stand - Pin Lift Style



This stand is designed to lift from under the fork using the holes at the bottom of your fork tubes.

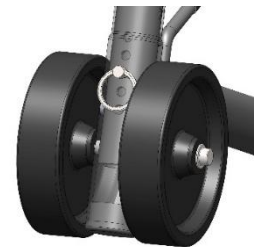
Thank you for choosing a Woodcraft front stand. **Please read the following instructions completely before using your new stand as they contain important information.**

Important Warnings – **ALWAYS** use front stands in conjunction with a rear stand. Front stands ARE NOT suitable to support a motorcycle by themselves. While the bike is on the stand, **do not sit on the bike or run the motorcycle**. Never transport the motorcycle with the stand in place.

Height Adjustment

There are 5 options for the height of the uprights. **IMPORTANT:** You must always use the detent pin when using the stand. Do NOT rely on the clamping force of the quick release clamp alone to secure the upright.

The stand is adjusted by (1) Removing the small silver hitch pin on the front side of the stand (2) un-clamp the quick release clamp (3) selecting the proper hole. Replace the locating pin and tighten the clamp.



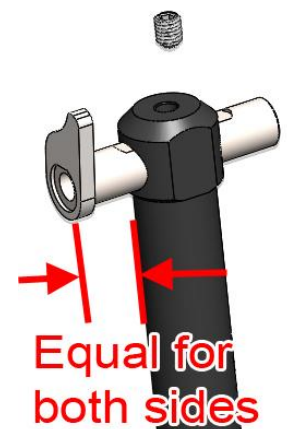
Adjust the height so that when the stand is locked in the lift position there is about 2 inches under the front tire. You want the lowest height that allows the wheel to clear the front fender when removed.

Width Adjustment

- Adjust the width of the lifters until the pins line up with centers of lower fork tube holes on both sides. **The width adjustment of the lift pins must be equal on both sides of the stand.** Make sure the flat on the lifter is on the top side and level with the top of the stand, then tighten the set screw onto the flat portion of the shaft (about 18 ft-lbs).

Lifter Use

- It is critical that the lift pins properly engage the fork lowers before attempting to lift the machine. The pins for the lifters must be completely seated in the center of the holes at the bottom of each fork tube. Be sure to visually check both with each use.
- Once both pins are placed in the center of the holes at the bottom of the forks, slowly lower the handle of the stand to the ground.



Transporting your stand

To save space when transporting your stand, the uprights may be removed and put in your tool box. When the stand is new, expect a very snug fit!