



# LEGEND

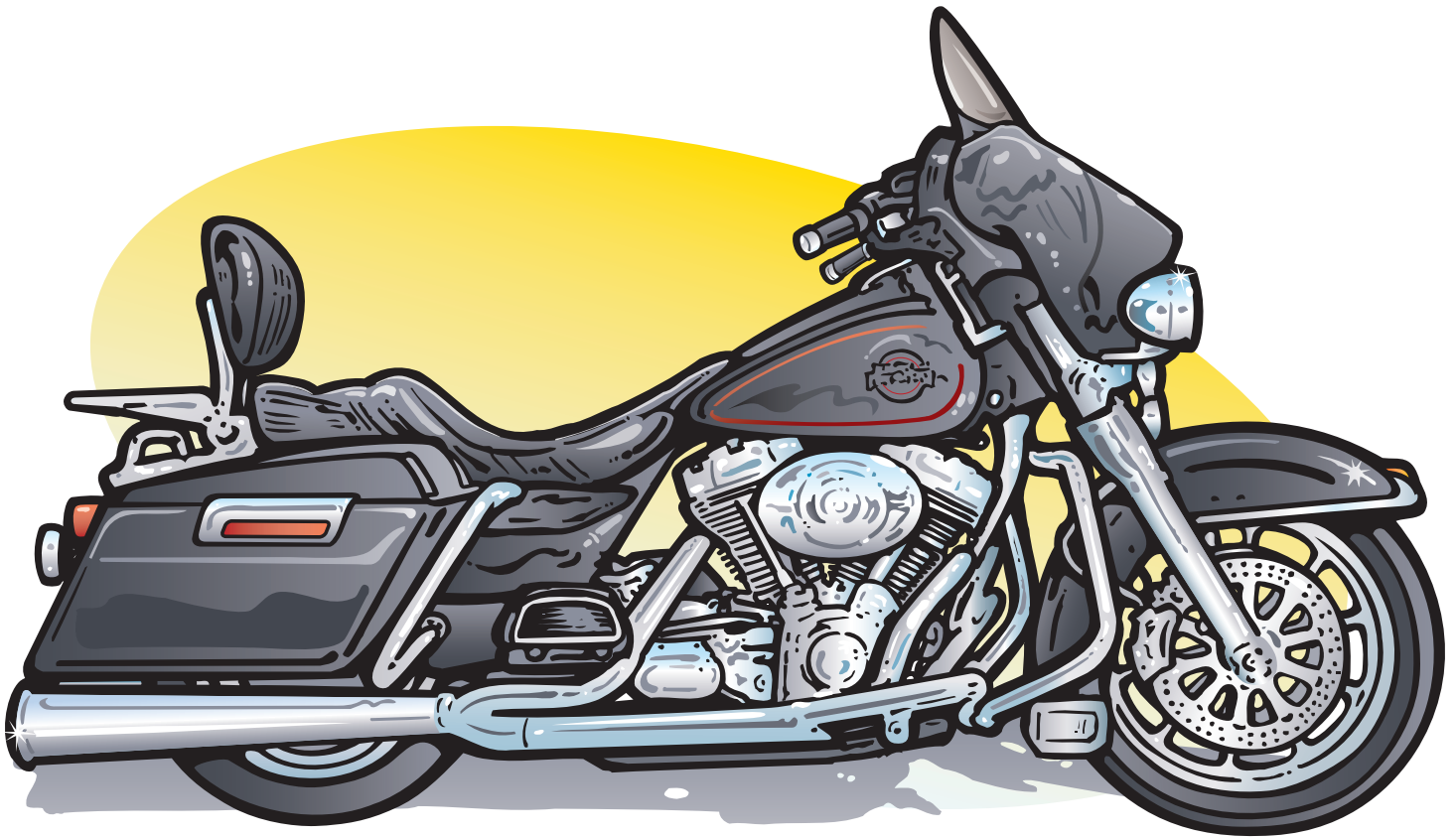
WWW.LEGENDSUSPENSIONS.COM

## INSTALLATION GUIDE

### **LEGEND GAUGE KITS:**

500-5201, 5202, 5203 & 5204

FITS HARLEY-DAVIDSON  
TOURING MODELS



WWW.LEGENDSUSPENSIONS.COM

P3001



MADE IN THE USA

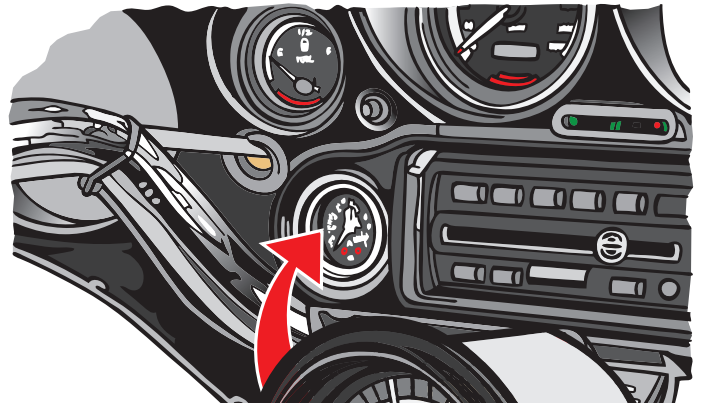
For Technical & Warranty Information: 605.720.4202 or [warranty@legendsuspensions.com](mailto:warranty@legendsuspensions.com)



**PROPERLY SUPPORT YOUR MOTORCYCLE PRIOR TO AIR SUSPENSION INSTALLATION!**



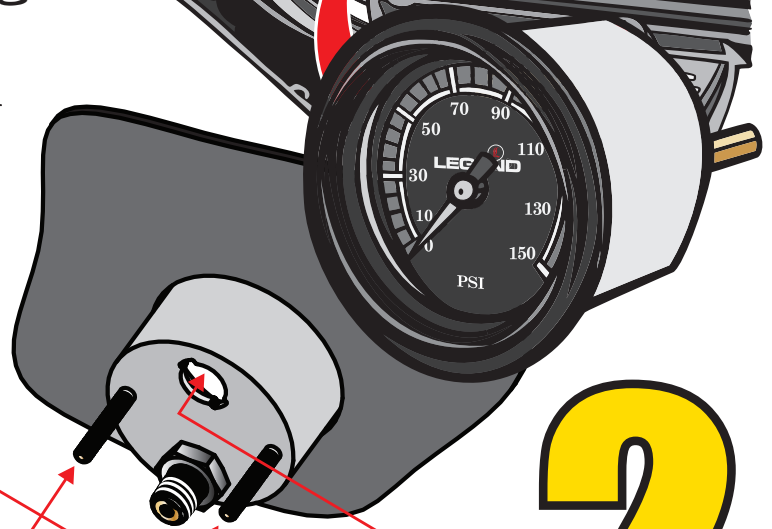
**LEGEND**  
WWW.LEGENDSUSPENSIONS.COM



**1**

### STEP 1: MOUNT AIR GAUGE

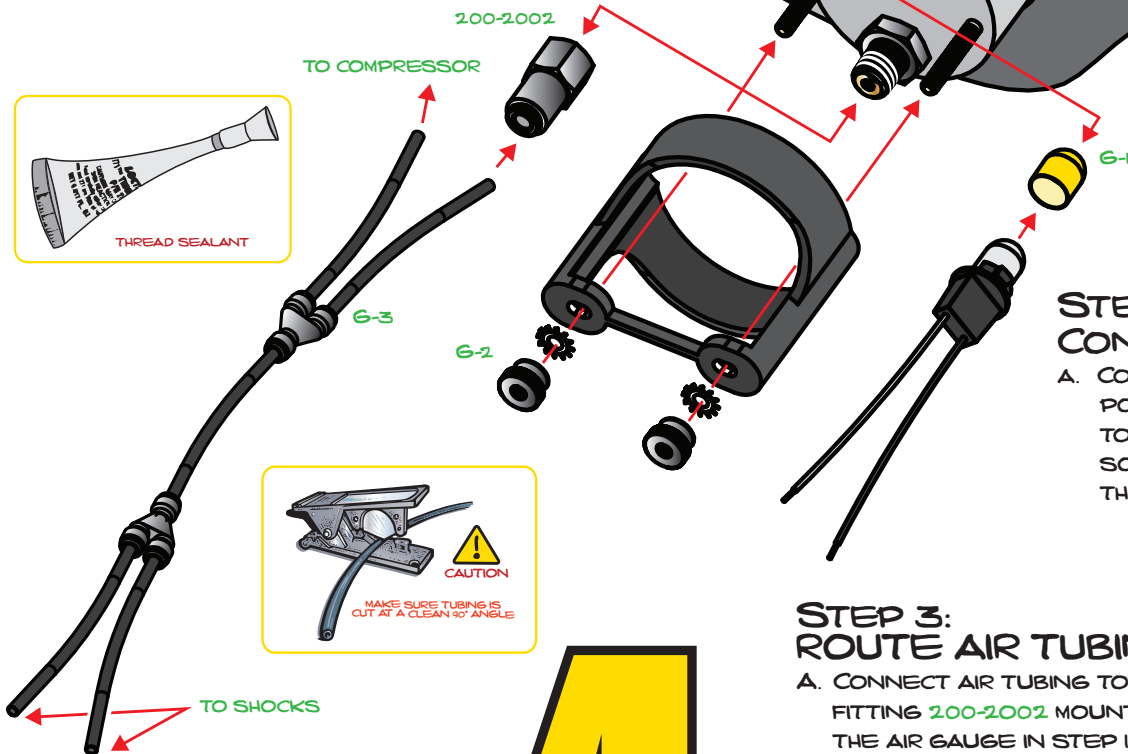
- REMOVE THE OUTER FAIRING AND DISCONNECT HEADLIGHT.
- REMOVE GAUGE OR COVER YOU WANT TO REPLACE WITH THE LEGEND GAUGE.
- APPLY SUPPLIED THREAD SEALANT TO THE MALE PIPE THREADS ON THE GAUGE AND ATTACH FITTING 200-2002.
- IF YOUR GAUGE HAS A BULB LIKE IN DIAGRAM G-1, COVER THE BULB WITH THE RUBBER COVER AS SHOWN. INSERT THE BULB INTO THE GAUGE AND TURN CLOCKWISE TO SECURE.
- INSERT GAUGE FROM FACE SIDE AND SECURE WITH THE PLASTIC CLAMP AND THUMB NUTS AS SHOWN IN DIAGRAM G-2.



**2**

### STEP 2: CONNECT WIRES

- CONNECT WHITE WIRE TO POSITIVE AND BLACK WIRE TO NEGATIVE OF THE POWER SOURCE FOR THE OE GAUGE THAT WAS DISCONNECTED.



### STEP 3: ROUTE AIR TUBING

- CONNECT AIR TUBING TO THE FITTING 200-2002 MOUNTED TO THE AIR GAUGE IN STEP 1.
- ROUTE AIR TUBING OUT OF THE FAIRING FOLLOWING FACTORY WIRING HARNESSES UNDER THE GAS TANK TO UNDER THE SEAT.
- LOCATE THE EXISTING AIR-TUBING GOING FROM THE COMPRESSOR TO THE SHOCKS.
- WITH THE SUPPLIED Y-FITTING TAP INTO THE AIR HOSE BETWEEN THE COMPRESSOR AND THE SHOCKS LIKE ILLUSTRATED IN DIAGRAM G-3.

**3**

### STEP 4: OPERATION

- ADD AIR TO THE SYSTEM AND MAKE SURE GAUGE IS WORKING.
- CHECK FOR AIR LEAKS WITH SOAPY WATER AROUND FITTINGS.
- RE-INSTALL SEAT AND OUTER FAIRING.

**4**