

INSTALLATION INSTRUCTIONS

DRAG SPECIALTIES SPOT LIGHT BAR P/N 2001-0371/0804

ATTENTION INSTALLER: (if other than owner): Please forward this Instruction Sheet to the purchaser of this product. These instructions contain valuable information necessary to the end user.

INTRODUCTION: These instructions describe the procedure for properly installing this spot light bar on the 2000 & later FLST models.

Review instructions carefully before beginning, as they contain important information. Please retain for future reference.

Particularly important information is distinguished in these instructions by the following notations.

NOTE: A NOTE provides key information to make procedures easier or clearer.

CAUTION: A CAUTION indicates special procedures that must be followed to avoid damage to the motorcycle and/or accessories.

WARNING!: A WARNING indicates special procedures that must be followed to avoid injury to a motorcycle operator or person inspecting or repairing the motorcycle.

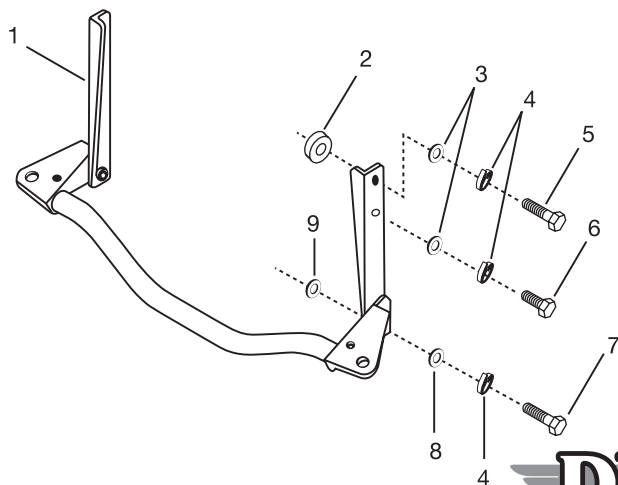


PROCEDURE:

1. Remove the two trim strips (one on each side of the fork tins) by removing the four button-head screws and set aside. They will not be re-used.
2. Take $\frac{5}{16}$ "-24x1- $\frac{1}{4}$ " hex bolt (item 7) and install $\frac{5}{16}$ " lock washer (item 4) and $\frac{5}{16}$ " flat washer (item 8) onto the $\frac{5}{16}$ " hex bolt.
3. While holding the light bar in place, slide the $\frac{5}{16}$ " spacer washer (item 9) between the fork and the lower mounting hole on the light bar. Insert the $\frac{5}{16}$ " hex bolt with washers and tighten only finger tight.
4. Take the $\frac{5}{16}$ "-24x1- $\frac{3}{8}$ " hex bolt (item 5) and install a $\frac{5}{16}$ " lock washer (item 4) and the larger $\frac{5}{16}$ " flat washer (item 3) on the hex bolt.
5. Hold the $\frac{5}{16}$ " spacer (item 2) between the upper light bar mount and the fork and install the $\frac{5}{16}$ " hex bolt with washers. Tighten finger tight.
6. Repeat steps 2 through 5 for the other side of the light bar.
7. Tighten all bolts securely to 10-12 ft-lbs.
8. $\frac{5}{16}$ "-24x1 bolts (item 6) and washers are used to secure the windshield to the light bar. If the windshield is not used, or a quick-detachable windshield is used, these bolts are not required.
9. Install spot lamps (not included) onto the two mounting locations according to the lamp manufacturer's instructions.

WARNING!:

Before operating motorcycle, be sure all hardware is tight.



KIT COMPONENTS

ITEM #	DESCRIPTION	QUANTITY
1	Light bar	1
2	$\frac{5}{16}$ "x $\frac{3}{4}$ " Upper Spacer	2
3	$\frac{5}{16}$ "x1- $\frac{1}{32}$ "x $\frac{1}{8}$ " Flat Washer	4
4	$\frac{5}{16}$ " Lock Washer	6
5	$\frac{5}{16}$ "-24x1- $\frac{3}{8}$ " Hex Bolt	2
6	$\frac{5}{16}$ "-24x1 Hex Bolt	2
7	$\frac{5}{16}$ "-24x1- $\frac{1}{4}$ " Hex Bolt	2
8	$\frac{5}{16}$ "x $\frac{1}{16}$ "x $\frac{1}{8}$ " Flat Washer	2
9	$\frac{5}{16}$ "x $\frac{1}{2}$ "x $\frac{5}{16}$ " Lower Spacer	2

DRAG
Specialties