



YOSHIMURA

RESEARCH & DEVELOPMENT OF AMERICA, INC.

5420 DANIELS STREET STE A, CHINO CA 91710 · (800) 634-9166 · (909) 628-4722 · FACSIMILE (909) 591-2198

WWW.YOSHIMURA-RD.COM

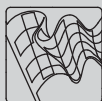
Signature Series

2008~2017

Suzuki RM-Z 450

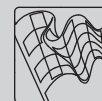
219210D320

RS-4 Stainless Steel Full-System



Signature Series systems are:

- CARB/EPA tail-pipe emissions compliant.
- Marked with appropriate EPA noise labels.
- Independent laboratory tested for EPA new vehicle noise compliance.

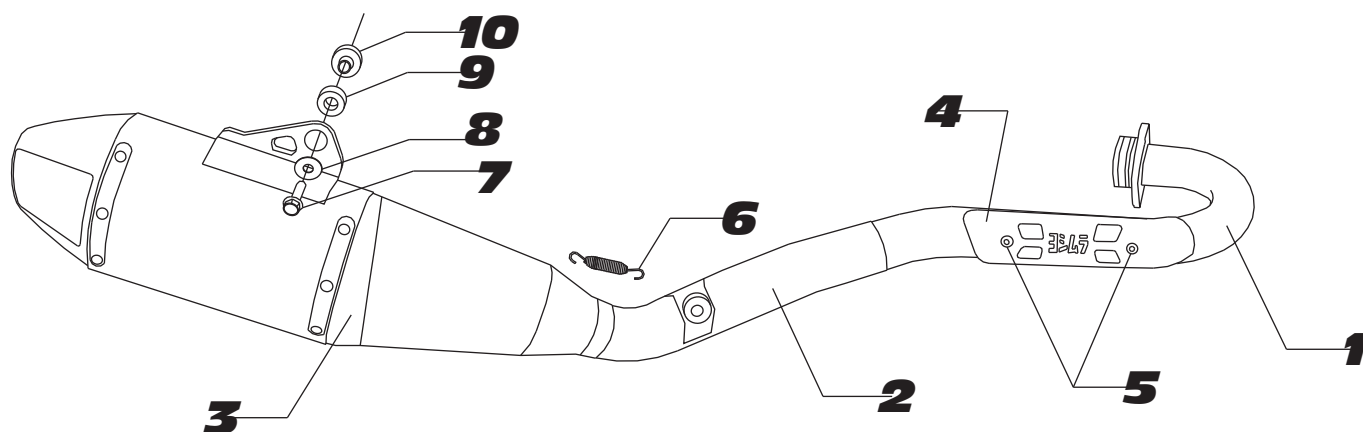


CAUTION: The muffler packing on this system **MUST** be replaced every 6-8 hours of use, or after each moto. Failure to follow recommended muffler re-packing interval can cause muffler damage and may void the warranty.



NOTE: IN THE STATE OF CALIFORNIA, IT IS ILLEGAL TO MODIFY THE EMISSION CONTROL SYSTEM, WHICH INCLUDES THE CARBURETORS OF ANY VEHICLE.

Assembly Diagram



NO.	DESCRIPTION	QTY	PART #
1	Yoshimura Header	1	2191-101
2	Yoshimura Tailpipe	1	2192-144
3	Signature Series Muffler	1	219210D320-RMA
4	Yoshimura Header Heatshield	1	2180-HS
5	Header Heatshield Bolts	2	RC116HSB
6	Short Exhaust Spring	1	RACE-SPX-1
7	8mm x 40mm Flange Head Bolt	1	M8X40H
8	8mm Flat Washer, Large	1	8MMWASHERL
9	Muffler Mount Rubber Grommet	1	Z1022
10	Aluminum Spacer	1	ALS-010
**	Low Volume Sound Insert (Installed)	1	INS-U-3
**	2-M Max Low Volume Sound Insert	1	INS-U-4
**	Adhesive Foil Heatshield	1	1200-00-01
**	Spring Puller Tool	1	ST-200
**	Yoshimura Vinyl Sticker	1	17029
**	Muffler Wash Plug	1	347PLUG
OPTIONAL REPLACEMENT PARTS			
Re-pack Kit		REPACK-RS4-PK29	

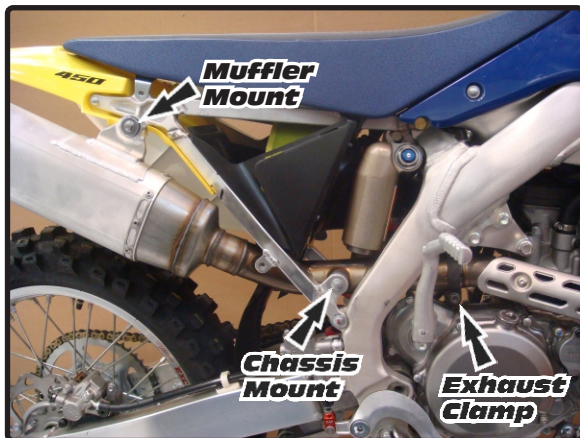
** Not shown in diagram.

Removal

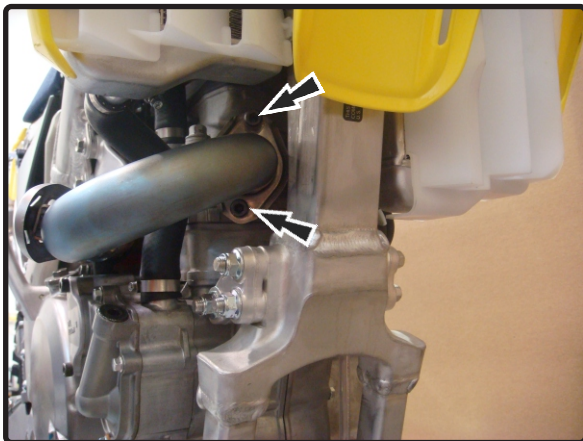
1. Remove the right rear number plate by removing the two screws shown below.



2. Loosen exhaust clamp between tailpipe and header.
3. Remove the chassis mount bolt and muffler mount bolt and carefully remove the stock muffler assembly.

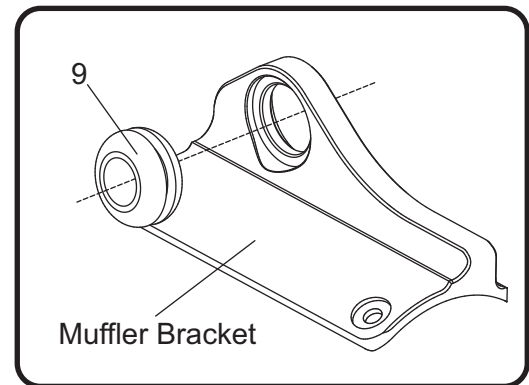


4. Remove the two header nuts and carefully remove the stock header. Inspect and replace exhaust port gasket if necessary.

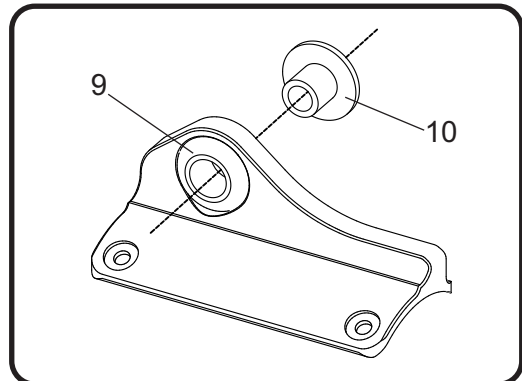


Installation

1. Install (No. 9) Z1022, rubber grommet into Yoshimura muffler bracket.



2. Install (No. 10) ALS-010, aluminum spacer into (No. 9) Z1022, rubber grommet as shown.



3. Install (No. 1) 2191-101, header using the stock header nuts. Do not torque at this time.
4. Install (No. 2) 2192-144, tailpipe onto (No. 1) 2191-101, header and secure using the stock chassis mount bolt.
5. It is necessary to trim the plastic tail for sufficient clearance between the muffler bracket and plastic. Trim along the dotted line shown below.



6. Secure (No. 3) Yoshimura muffler to subframe using (No. 7) *M8X40H*, bolt and (No. 8) *8MMWASHERL*, washer. Do not torque at this time.
8. Install (No. 6) *RACE-SPX-1*, exhaust spring between (No. 3) Yoshimura muffler and (No. 2) *2192-144*, Yoshimura tailpipe.
9. Torque muffler mount bolt to factory specification.
10. Torque chassis mount bolt to factory specification.
11. Torque header nuts to factory specification.
12. Install (No. 4) *2180-HS*, header heatshield onto header using (No. 5) *RC116HSB*, heatshield bolts.
13. Apply *1200-00-01*, adhesive foil heatshield to the inside of the number plate as shown below. The adhesive foil heatshield will prevent the number plate from discoloring and/or melting.

Note: Clean number plate thoroughly with soap and water before applying heatshield foil. Debris may hinder the foil from adhering to the surface.

14. Re-install the number plate.



15. It is recommended that the muffler and tailpipe be wiped down with rubbing alcohol to remove oil and fingerprints. This will help prevent tarnishing of the finish after the exhaust is heated up.

16. Before starting motorcycle, check for proper clearance between new exhaust system and rear suspension (i.e. tire, swingarm, brake, rear shock, etc.). If any problem is found, please carefully follow through the installation steps again. If problem still persists, please call Yoshimura tech department at (800) 634-9166 / in CA (909) 628-4722.

Note: After starting motorcycle, it is normal for new exhaust system and muffler to emit smoke until oil residue burns off.