

INSTALLATION INSTRUCTIONS

DRIVING LIGHTS, CHROME

5061

THANK YOU FOR CHOOSING KURYAKYN!

Protect yourself and others from possible injury and property damage or loss. Pay close attention to all instructions, warnings, cautions, and notices regarding the installation, use, and care of this product.

WARNING THIS INDICATION ALERTS YOU TO THE FACT THAT IGNORING THE CONTENTS DESCRIBED HEREIN CAN RESULT IN POTENTIAL DEATH OR SERIOUS INJURY.

CAUTION THIS INDICATION ALERTS YOU TO THE FACT THAT IGNORING THE CONTENTS DESCRIBED HEREIN CAN RESULT IN MINOR OR MODERATE POTENTIAL INJURY.

NOTICE THIS INDICATION ALERTS YOU TO THE FACT THAT IGNORING THE CONTENTS DESCRIBED HEREIN MAY NEGATIVELY AFFECT PRODUCT PERFORMANCE AND FUNCTIONALITY OR DAMAGE THE PRODUCT ITSELF OR THE PRODUCT TO WHICH IT IS BEING ATTACHED.

ENSURE THAT THE FOLLOWING PARTS HAVE BEEN INCLUDED IN THE KIT:

- | | | | |
|---|-----------------------------|----|-------------------------------------------|
| 2 | Victory Driving Lights | 1 | Hardware Kit, containing: |
| 1 | Victory Inner Fairing Mount | 2 | M6 x 1.0 x 60mm Socket Head Cap Screws |
| 1 | Mounting Kit, containing | 2 | 3/8-16 Locknuts |
| 1 | Right Hand Mount | 2 | Pivot Domes |
| 1 | Left Hand Mount | 1 | Wiring Kit, containing: |
| 2 | Pivot Mounts | 1 | Keyed Power Lead |
| | | 1 | Negative Y-Adaptor |
| | | 1 | Ground Y-Adaptor |
| | | 2 | Dielectric Grease Packets |
| | | 4 | Insulated Female Bullet Receptacles 22-16 |
| | | 4 | Male AMP Insulated Bullets 16-22 AWG |
| | | 1 | 1/4" Insulated Female Spade Connector |
| | | 1 | 1/4" Insulated Male Spade Connector |
| | | 10 | 6" Cable Ties |

YOU WILL ALSO NEED:

Hex key set (ball-end recommended), socket wrench set

NOTICE THESE INSTALLATION INSTRUCTIONS CONTAIN IMPORTANT INFORMATION. ENSURE THE END USER RECEIVES THIS COPY AND IS AWARE OF ITS IMPORTANCE FOR FUTURE USE.

WARNING THE END USER'S SAFETY DEPENDS UPON PROPER INSTALLATION OF THIS PRODUCT. IF A STEP IN THESE INSTRUCTIONS IS NOT WITHIN YOUR CAPABILITIES OR YOU DO NOT HAVE THE CORRECT TOOLS, HAVE YOUR DEALER PERFORM THE PROCEDURE. IMPROPER INSTALLATION OF THIS PRODUCT COULD RESULT IN DEATH OR SERIOUS INJURY.

ACCIDENTAL VEHICLE START-UP COULD CAUSE DEATH OR SERIOUS INJURY, REMOVE THE MAIN FUSE BEFORE PROCEEDING.

STEP 1 Read and understand all steps in the instructions before starting the installation. Park the motorcycle on a hard, level surface and turn off the ignition.

STEP 2 Remove the windshield using a hex key.



KURYAKYN.COM

INSTALLATION INSTRUCTIONS

DRIVING LIGHTS, CHROME

5061

-CONTINUED-

STEP 3 Remove the headlight frame using a body knife, or a padded shim.



STEP 4 Unscrew two top and bottom socket head cap screws from the headlight brackets.

Disconnect headlight wires and remove the light from bike. Set aside in a safe location.



STEP 5 Disconnect the Left Hand and Right Hand turn signal cables.

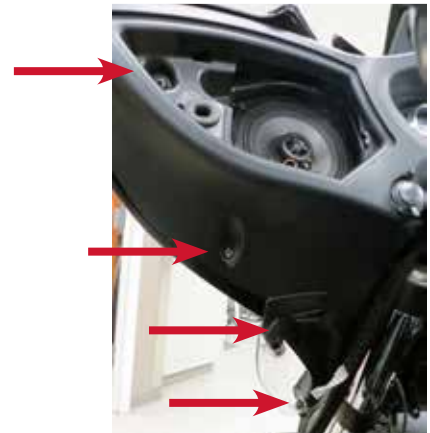


STEP 6 Remove the speaker grill, using a body knife or padded shim, to access the screw connecting the outer fairing to the motorcycle.



STEP 7 Remove screws connecting the outer fairing to the motorcycle.

Note: Remove wind deflectors from outer fairing of motorcycle if it is equipped with them.



INSTALLATION INSTRUCTIONS

DRIVING LIGHTS, CHROME

5061

-CONTINUED-

- STEP 8** With both of the turn signal wires disconnected, lift up and away to carefully remove outer fairing from bike. Refer to your motorcycle's service manual for assistance.

Place outer fairing on flat clean surface.

- STEP 9** Working on a flat clean surface, disconnect turn signal lights from outer fairing using a socket wrench.

Gently pull light out and away from outer fairing.

Set outer fairing aside until Step 16.

Set turn signal lights and hex head screw aside until Step 20.

- STEP 10** Remove the two hex head screws from inner fairing support bracket using a socket wrench. Set screws aside in a safe place, until Step 15.

- STEP 11** Locate the dark blue with pink tracer wire connected to the light blue wire labeled "Power" on the lower right (brake side) corner. These wires go to the Heated grips switch on the dash.

Disconnect the two.

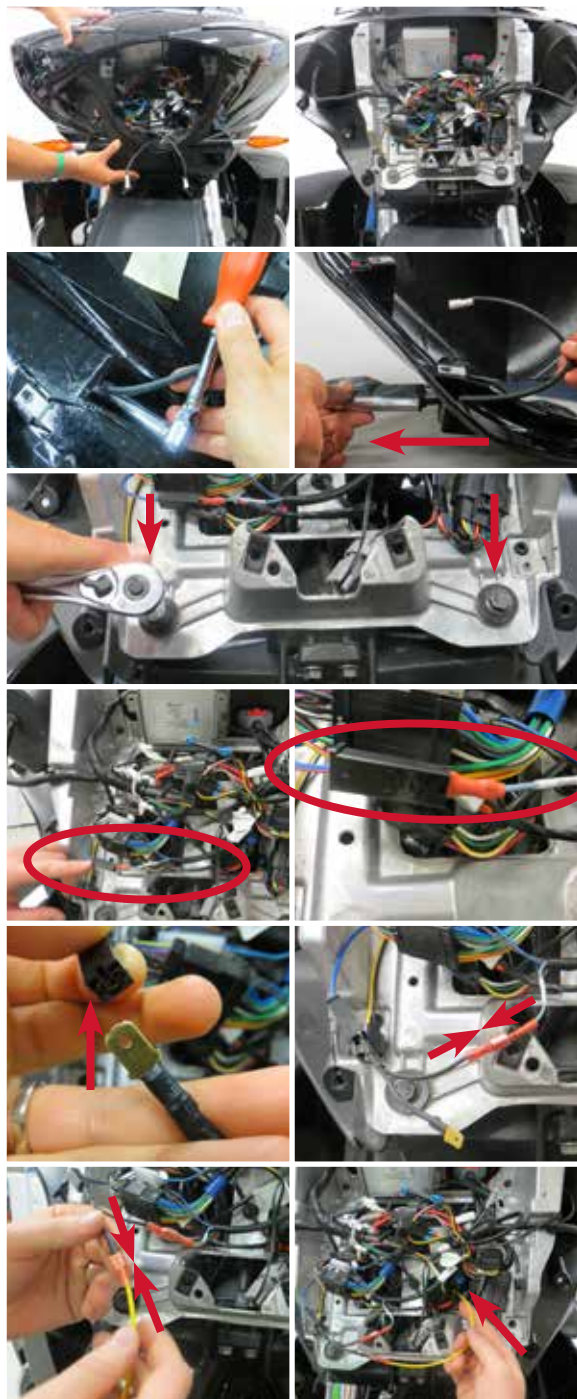
This will be used as Keyed Power for the Kuryakyn wire and relay kit.

- STEP 12** Locate the Negative Y-Adaptor. Connect the female connector, on the dark blue with pink tracer wire, to the single end of the Y-Adaptor.

Connect the light blue power wire to the female connector of the Negative Y-Adaptor.

- STEP 13** Locate the Keyed Power Lead (yellow wire with a female spade connector and bare wire end). Connect the female connector of the Keyed Power Lead to the male spade connector of the Negative Y-Adaptor.

Route the bare end of the wire through the inner fairing.



KURYAKYN.COM

INSTALLATION INSTRUCTIONS

DRIVING LIGHTS, CHROME

5061

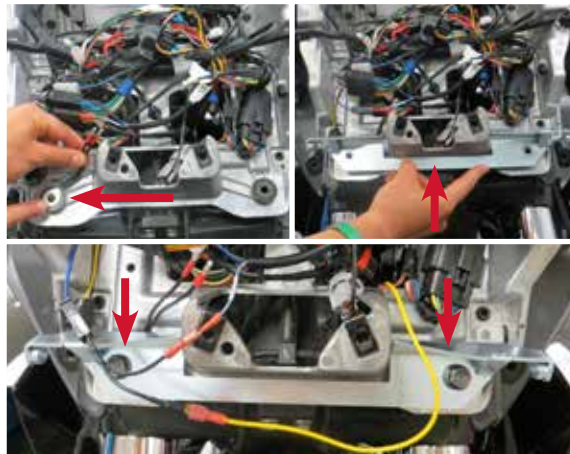
-CONTINUED-

STEP 14 Locate Ground Y-Adaptor from wiring kit.

Locate and align Inner Fairing Mount with holes, making sure to install the Ground Y-Adaptor between the Inner Fairing Mount and the inner fairing support bracket.

The black male bullet connectors will attach to the black female bullet connectors in the wiring and relay kits.

STEP 15 Attach the Inner Fairing Mount using the hex head screws that were removed in Step 10.



NOTICE

A KURYAKYN WIRING AND RELAY KIT IS REQUIRED FOR COMPLETION OF WIRING THE KEYED POWER LEAD, GROUND Y-ADAPTOR AND DRIVING LIGHTS.

WIRING AND RELAY KITS 2328 OR 2202 ARE SOLD SEPARATELY.

BE SURE THIS WIRING IS COMPLETED BEFORE MOVING ON TO THE NEXT STEP.

STEP 16 Reattach the outer fairing, making sure it is aligned and properly placed over the new Inner Fairing Mount.



STEP 17 Locate a Victory Driving Light, and one Pivot Mount from the Mounting Kit. With the beveled side of the Pivot Mount facing down towards the Driving Light, route the Driving Light's wire through the Pivot Mount. Be sure the wire is set inside the groove within the Pivot Mount. This will prevent pinching of the wire.



KURYAKYN.COM

INSTALLATION INSTRUCTIONS

DRIVING LIGHTS, CHROME

5061

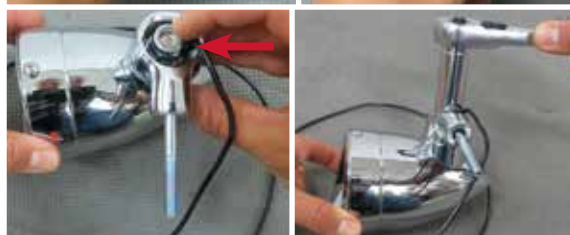
-CONTINUED-

STEP 18 Locate the Hardware Kit. Locate one Pivot Dome and place it into the Pivot Mount with the beveled side facing down.

Locate one M6 Socket Head Cap Screw and insert into the neck of the Pivot Mount.



STEP 19 Locate one 3/8-16 Locknut and attach it to the Driving Light Bolt. Align the mount as you would want it positioned on your motorcycle before fully tightening the Pivot Mount to the Driving Light.



STEP 20 Locate the Left Hand Victory Mount. Route the left turn signal wire through the bottom hole on the mount. Connect the turn signal light to the mount using the stock hex screw that was removed in Step 9.



STEP 21 Take the Driving Light/Pivot Mount assembly and insert the M6 socket head cap screw through the top hole of the Left Hand Victory Mount. Set the Driving Light wire in the groove of the mount.



STEP 22 Starting with the turn signal connector, feed the wires of the lights through the farthest back hole on the left side of the outer fairing. Align and insert the light assembly to the outer fairing.



STEP 23 Adjust the driving lights to desired position. Secure the light assembly in place by tightening the M6 socket head cap screw, using a ball-end hex key.



INSTALLATION INSTRUCTIONS

DRIVING LIGHTS, CHROME

5061

-CONTINUED-

STEP 24 Repeat Steps 17-23 for the opposite side.

Reinstall the main fuse, turn the ignition on, and test for proper function of the lights. The Victory Driving Lights are running lights. Turn ignition off.

STEP Reconnect the headlight and reinstall the headlight frame and windshield in the reverse order they were removed.



ADJUSTING THE DRIVING LIGHTS

⚠ WARNING

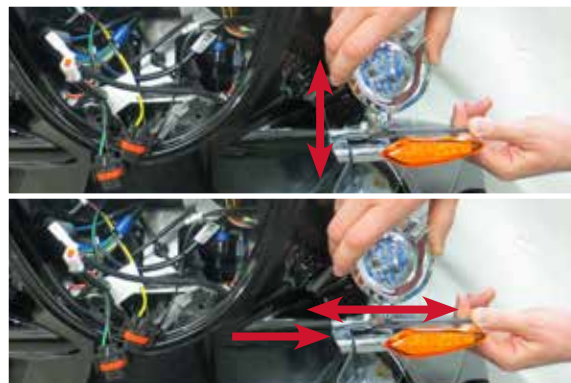
WARNING! IT IS THE INSTALLERS RESPONSIBILITY TO ADJUST THE NEW DRIVING LIGHTS TO THE PATTERN RECOMMENDED IN THE SERVICE MANUAL FOR THE DRIVING LIGHTS. FAILURE TO PROPERLY ADJUST THE LIGHT PATTERN MAY DISTRACT ONCOMING DRIVERS RESULTING IN SERIOUS INJURY OR DEATH.

STEP 1 For up and down adjustments, loosen the M6 fastener that secures the light assembly to the mount and tilt the assembly in the desired direction. When the light is in the desired position, tighten the fastener securely.

STEP 2 For side to side adjustments, loosen the stock turn signal fastener and remove the turn signal so you can access the 3/8" Locknut that is located in the Pivot Mount of the light assembly. Loosen the 3/8" Locknut and tilt the assembly in the desired direction. When the light is in the desired position, re-tighten the locknut securely, and reassemble the turn signal.

NOTICE

IT IS THE END USER'S RESPONSIBILITY TO ENSURE THAT ALL FASTENERS (INCLUDING PRE-ASSEMBLED) ARE TIGHTENED BEFORE OPERATION OF THE MOTORCYCLE. KURYAKYN WILL NOT PROVIDE WARRANTY COVERAGE ON PRODUCTS OR COMPONENTS LOST OR DAMAGED DUE TO IMPROPER INSTALLATION OR LACK OF MAINTENANCE. PERIODIC INSPECTION AND MAINTENANCE ARE REQUIRED ON ALL FASTENERS.



KURYAKYN.COM

INSTALLATION INSTRUCTIONS

DRIVING LIGHTS, CHROME

5061

-CONTINUED-

REPLACING THE LIGHT BULB

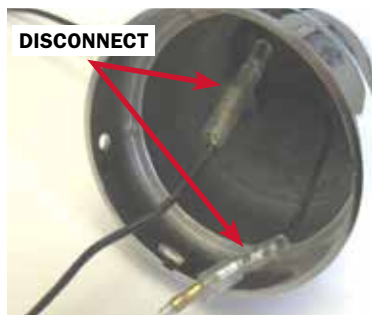
- STEP 1** Remove the Button Head Cap Screw located at the bottom of the light housing.



- STEP 2** Remove the light bezel by twisting the bezel counter clockwise and pulling the bezel outward.

- STEP 3** Remove the rubber inner seal from the light housing. The glass light housing should now be free.

Note: Please note the orientation of the locating ring. This will greatly help when reassembling the lights.



- STEP 4** Pull the glass housing out way from the light housing and disconnect the wires.

- STEP 5** Remove the screws to gain access to the light bulb. Pull the light bulb from the mount, with the white wire attached.

- STEP 6** Take the new light and insert the white wire through the mount from the front side. (The wire should fit through the rubber boot on the backside of the mount.)



NOTICE

DO NOT HANDLE THE GLASS PORTION OF THE NEW BULB WITH YOUR BARE HANDS. OIL FROM YOUR FINGERS WILL STAY ON THE BULB AND CREATE A HOT SPOT, SHORTENING THE LIFE OF THE BULB. IF YOU DO TOUCH THE BULB, CLEAN IT WITH AN AMMONIA BASED CLEANER, SUCH AS WINDOW CLEANER OR WITH ALCOHOL BEFORE INSTALLATION.

- STEP 7** Reassemble the glass housing and the light housing in the reverse order they were disassembled.

WARNING

BEFORE RIDING, ENSURE THAT THE INSTALLATION OF THIS PRODUCT DOES NOT INTERFERE WITH THE PROPER OPERATION OF THE MOTORCYCLE.



INSTALLATION INSTRUCTIONS

DRIVING LIGHTS, CHROME

5061

-CONTINUED-

LIMITED WARRANTY

Kuryakyn warrants that any Kuryakyn products sold hereunder, shall be free of defects in materials & workmanship for a period of one (1) year from the date of purchase by the consumer excepting the following provisions:

1. Kuryakyn shall have no obligation in the event the customer is unable to provide a receipt showing the date the customer purchased the product(s).
2. The product must be properly installed, maintained & operated under normal conditions.
3. Kuryakyn shall not be liable for any consequential & incidental damages, including labor & paint, resulting from failure of a Kuryakyn product, failure to deliver, delay in delivery, delivery in nonconforming condition, or for any breach of contract or duty between Kuryakyn & a customer.
4. Kuryakyn products are often intended for use in specific applications. Kuryakyn makes no warranty if a Kuryakyn product is used in applications other than intended.
5. Kuryakyn electrical products are warranted for one (1) year from the date of purchase by the consumer. L.E.D.'s contained in components of Kuryakyn products will be warranted for defects in materials & workmanship for 3 years from the date of purchase whereas all other components shall be warranted for one (1) year.
6. All warranty claims must be directed to the place of purchase. Merchandise sold through internet auction sites or any other unauthorized reseller shall not carry a Kuryakyn warranty. If unsure, please contact the place of purchase to verify they are an authorized Kuryakyn reseller.

RETURN POLICY

Merchandise determined to be defective may be returned up to one year from the date of purchase. Returns must be processed through original seller. Returned merchandise for any other reason other than warranty claims must be in like new condition & subject to a 20% restocking fee. All returns are subject to inspection for determination of full or partial credit. Any returned part that shows evidence of being used or installed contrary to manufacturer's instructions, &/or subjected to improper handling, packaging or return shipping by the customer, will not be eligible for exchange, refund or warranty consideration. All returned electrical items will be inspected & tested. If electrical item is deemed functional, no credit will be issued & item will be returned. All sales are final on discontinued or closeout merchandise.

©2015 KURYAKYN HOLDINGS, LLC ALL RIGHTS RESERVED

KURYAKYN, KURYAKYN K logo and the marks appearing on this instruction sheet are registered and common law trademarks of Kuryakyn Holdings except noted third-party trademarks. A full listing of trademarks and trademark registrations owned by Kuryakyn Holdings can be found at www.kuryakyn.com/legal-notice.

Emissions Notice: The California Air Resources Board (CARB) does not permit the use of aftermarket emission-related parts(s) that alter the performance of OEM emission-related devices unless CARB has issued an Executive Order, other than on racing vehicles on closed courses. Check your local laws and manufacturer's information.

Listed Manufacturers and product model names are for reference only. All product and company names are trademarks or registered trademarks of their respective holders. Use of them does not imply any affiliation with or endorsement by them. All specifications are subject to change without notice.

For additional information on third-party product and company names, please consult our Web page at www.kuryakyn.com/legal-notice

KURYAKYN.COM

