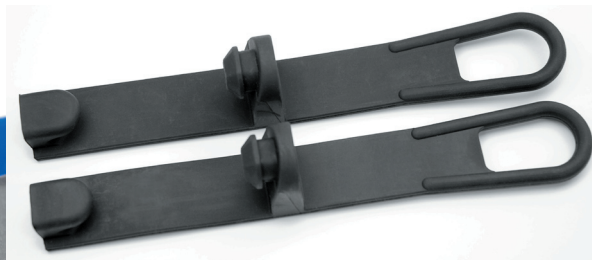


X2 FEATURES AND WIRING

RUBBER MOUNTING STRAPS:

RUBBER MOUNTING STRAPS:

The two rubber straps wrap around the forks. They hold the light to the motorcycle and extend the life of the light by providing anti-vibration isolation. Rubber straps install with no tools. Use isopropyl rubbing alcohol as lubricant when attaching the rubber straps to the light. Take care not to rip or tear.



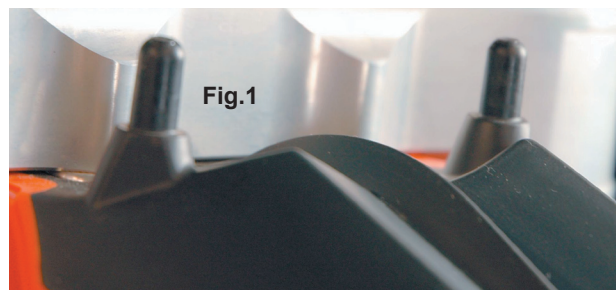
LOWER MOUNTING PINS:

MOUNTING PINS:

There are four holes on the bottom of X2. 2 pins go through the holes to secure the bottom of X2 to the fender. Choose between the forward or rear holes to aim X2's beam. The pins reduce "excessive play" commonly found with other mounting techniques. There are several pin options:

A) O.E.M. MOUNTING PINS:

Some motorcycles (KTM) arrive from the manufacturer with mounting pins built in (Fig.1). If they are present, use them.



B) MOUNTING PLATE:

Some motorcycles (CRF450R, WR450) arrive from the manufacturer with the fender bolted to the triple tree (with a 56-60mm bolt spacing and M6 bolts.) Sandwich the included mounting plate between the triple tree and fender, providing mounting pins for X2. Use Loctite thread locking compound to ensure the triple tree bolts do not back out during riding.

Fig.2



C) DOWN-PINS:

If option A or B will not work, use the included "down pins." To install, place X2 on the motorcycle using the rubber fork straps. Turn on X2 and aim the beam to the desired height. Determine which set of holes to use on X2 (the down-pins are reversible, side specific, and usually look best if the screw is to the rear of the light, as shown in Fig.3.) Use a marking pen to mark where two holes should be drilled in the fender. Remove the light from the motorcycle and drill the two 8mm (5/16") holes. Screw the down pins to X2 as shown in (Fig.3). X2 should now have two pins that fit into two drilled holes on the fender.

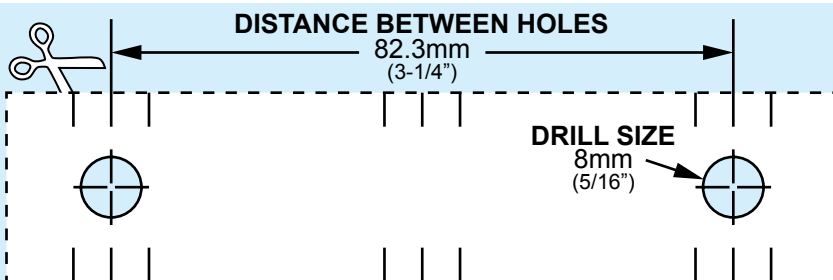
Fig.3



The down-pin drill template to the right may be used if using the down-pin option.

1. Mount X2 using fork straps, align beam angle.
2. With beam angle in place, center X2 right-left on the fender. Cut out and tape down-pin drill template in correct position on fender.
3. Drill down-pin holes and install X2.

Drill 1 set of holes ONLY. Drilling 2 sets of holes can cause fender plastic to break out.



X2 FEATURES AND WIRING

CABLE GUIDE:

CABLE GUIDE:

To install, thread the cables through the cable guide, then screw the cable guide to X2 as shown to the right.

Be sure the cables are routed properly. The forks compress a lot during riding, make sure the cables have enough room to move up and down without causing damage. MX bikes should use Enduro brake lines for optimum X2 fitment. Example: CRF uses CRFX brake line, YZF uses WRF line, etc.



ROCK GUARD:

DEBRIS SHIELD:

Protect X2 from rocks and flying debris. Installs with an insertion tab and a screw. Intended for racing, the rock guard is optional. X2 will operate with or without the rock guard in place. If you run X2 without the rock guard, avoid gravel roosts. The lamp glass is extremely difficult to damage, and is optically very clear.



ROCK GUARD VENT:

SILICONE HUMIDITY PLUG:

The rock guard works with a silicone gasket on X2 to create a water-resistant barrier inside. Occasionally, water may still find its way in. If fogging or moisture buildup occurs, remove the vent plug (shown below as a red dot.) Use a paper clip to poke through the silicone vent plug to allow air inside the light.

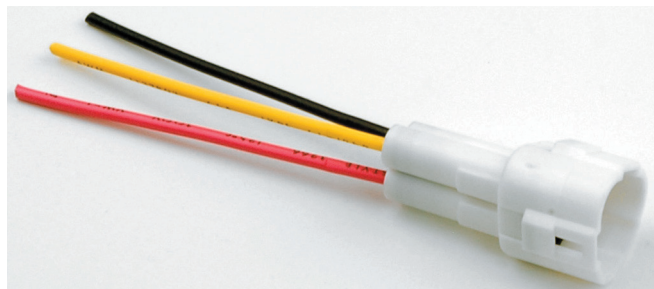


STUB CONNECTOR:

WIRE COLOR	FUNCTION	CONTROLS
YELLOW	HIGH BEAM	4" SC4 BULB
RED	LOW BEAM	2" MR16 BULB
BLACK	GROUND	GROUND

CONNECT TO POWER:

Use the included wire stub connector to connect X2 to power. The white connector allows for quick disconnect and removal of X2 from the motorcycle. An on/off switch is recommended. A fuse (10-20 amp) will protect from any power spikes.



*This stub connector is included in all X2 kits.
Complete wire harness with on/off switch sold separately.*