



YOSHIMURA

RESEARCH&DEVELOPMENT OF AMERICA, INC.

5420 DANIELS STREET STE A, CHINO CA 91710 · (800)634-9166 · (909)628-4722 · FACSIMILE (909)591-2198

WWW.YOSHIMURA-RD.COM

OFF-ROAD PERFORMANCE EXHAUST SYSTEM

Kawasaki
2009
KX250F

2426703

RS2 STAINLESS STEEL SLIP-ON WITH ALUMINUM SLEEVE

NOTE: THIS SYSTEM IS DESIGNED FOR USE IN CLOSED COURSE COMPETITION AND IS NOT INTENDED FOR ANY OTHER USE.



THIS PRODUCT IS DESIGNED FOR USE IN CLOSED COURSE RACING AND IS NOT INTENDED FOR ANY OTHER USE.



CAUTION: The muffler packing on this system **MUST** be replaced every 8-10 hours of use, or every 1-2 motos. Failure to follow recommended muffler re-packing interval can cause muffler damage and may void the warranty.



NOTE: IN THE STATE OF CALIFORNIA, IT IS ILLEGAL TO MODIFY THE EMISSION CONTROL SYSTEM, WHICH INCLUDES THE CARBURETORS OF ANY VEHICLE.

Caution: Exhaust system can be extremely hot. Let motorcycle cool down before beginning installation. Always wear hand and eye protection and take precautionary measures to avoid injury.

Note: Read through all instructions before beginning

Tools Needed:

Metric Socket Set
Ratchet Wrench and Extension
Torque Wrench

Installation Steps:

1. Remove stock exhaust system.

- Remove right rear number plate (see Fig. 1 for bolt locations).
- Loosen exhaust clamp and slide forward onto header.
- Remove muffler mounting bolt and remove muffler. (Fig. 2)
- Remove exhaust clamp from header.
- Loosen header nuts.

2. Install Yoshimura Slip-on system.

- Insert supplied exhaust clamp onto header.
- Insert supplied rubber grommet into muffler bracket.
- Insert aluminum spacer into rubber on the subframe side. (See Fig. 4)
- Install Yoshimura muffler/tailpipe assembly. (Note: Yoshimura system does not retain stock gasket)
- Use supplied hardware to bolt muffler to the subframe. Orientation is as follows: Supplied bolt, Supplied Washer, Rubber Grommet (Inserted into muffler bracket), Supplied Aluminum spacer. (See Fig. 3) Do not torque at this time.
- Bolt tailpipe to subframe using stock bolt. (See Fig. 3) Do not torque at this time.
- Torque header nuts to 15 lb-ft (2.0 kg-m).



Fig. 1



Fig. 2



Fig. 3

-Move exhaust clamp onto tailpipe and torque to 9 lb-ft (1.25 kg-m) .

3. It is recommended that the muffler and tailpipe be wiped down with rubbing alcohol to remove oil and fingerprints. This will help prevent tarnishing of the finish after the exhaust is heated up.
4. Before starting motorcycle, check for proper clearance between new exhaust system and rear suspension (i.e. tire, swingarm, brake, rear shock, etc). If any problem is found, please carefully follow through the installation steps again. If problem still persists, please call Yoshimura tech department at (800) 634-9166 / in CA (909) 628-4722.

5. Reinstall number plate using reverse steps of removal.

NOTE: After starting motorcycle, it is normal for new exhaust system and muffler to emit smoke until oil

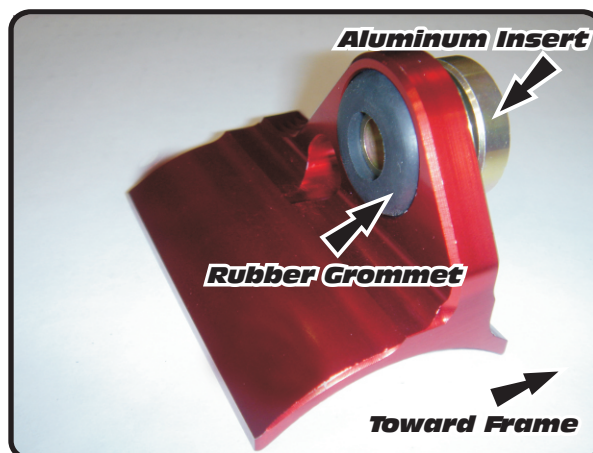
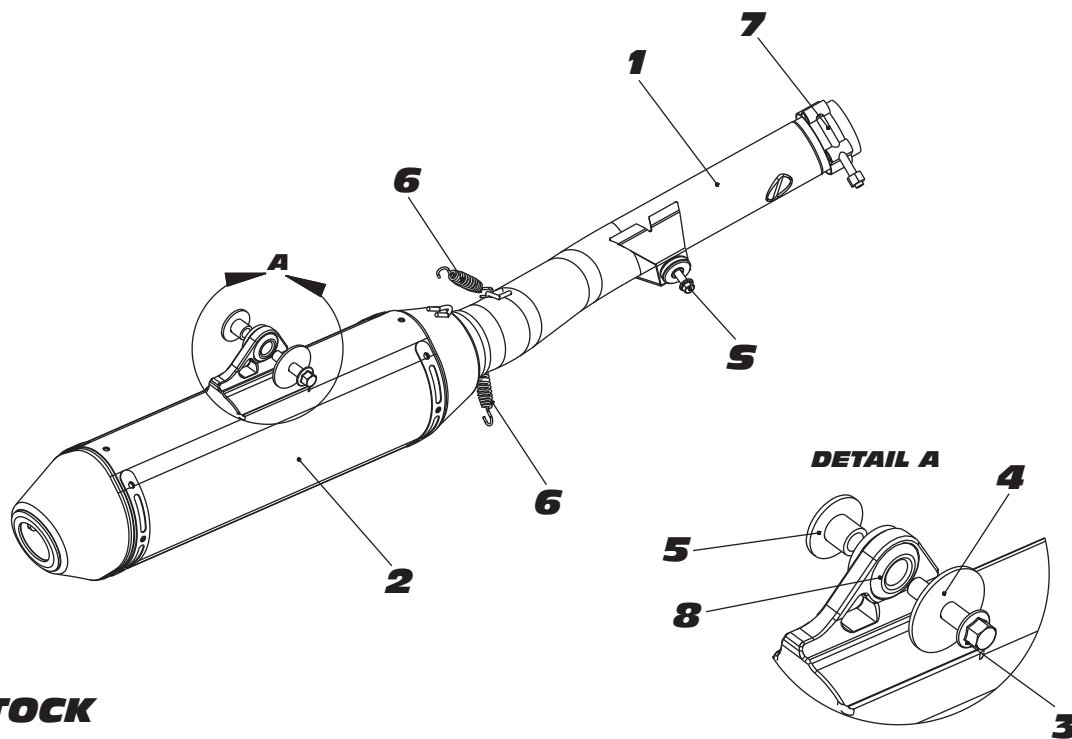


Fig. 4

#2426703



Parts Diagram

NO.	DESCRIPTION	QTY	PART #
1	Yoshimura Tailpipe	1	2426-152-01
2	Yoshimura Race Muffler with Aluminum Sleeve	1	2445503-RMA
3	8mm x 35mm Flange Bolt	1	M8X35H
4	8mm Large Washer	1	8MMWASHERL
5	Aluminum Insert for Rubber Grommet	1	ALS-003
5	Medium Exhaust Spring	2	RACE-SPX-1
7	20060 Collector Clamp	1	20060
8	Muffler Mount Rubber Grommet	1	Z1022
**	Spring Puller Tool	1	ST-200
**	Yoshimura Offroad Endcap Plug	1	347PLUG
**	Yoshimura Vinyl Sticker	1	17029



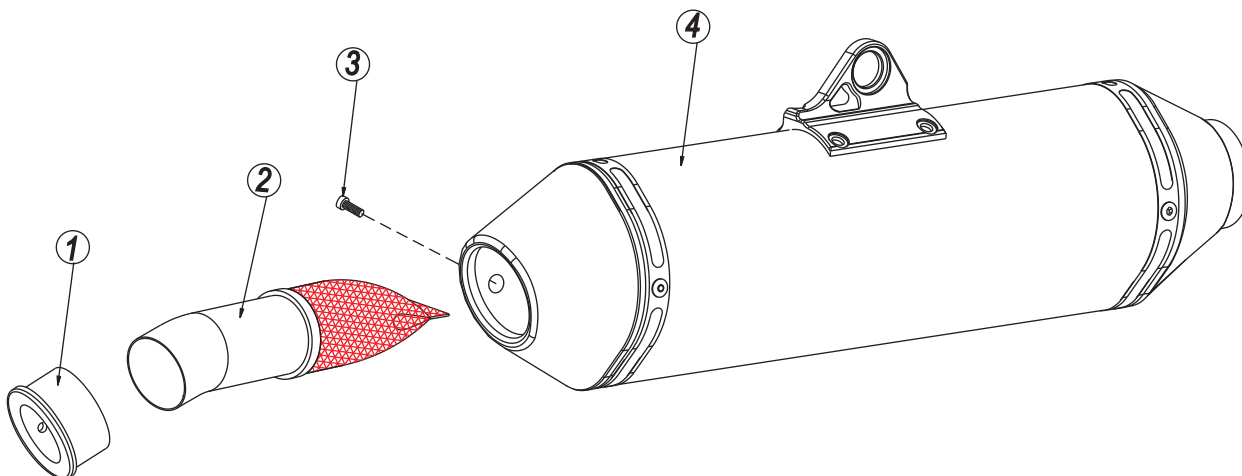
YOSHIMURA

RESEARCH & DEVELOPMENT OF AMERICA, INC.

5420 DANIELS STREET SUITE A, CHINO, CA 91710 · (800)634-9166 · (909)628-4722 · FACSIMILE (909)591-2198

www.yoshimura-rd.com

Spark Arrester Cleaning Information



Parts Diagram

Caution: *Muffler can be extremely hot. Let muffler cool down before removing spark arrester.*

Note: *Read through all instructions before beginning disassembly.*

Tools Needed:

4mm Allen Key
Wire Brush
Pair of Gloves
Safety Glasses

Cleaning Steps:

- 1 Using a 4mm Allen key, remove the bolt that secures the aluminum ring and spark arrester to the muffler (see Parts Diagram for location).
- 2 Remove the spark arrester from the muffler.

NO.	DESCRIPTION	QTY
1	Aluminum Ring	1
2	Spark Arrester	1
3	Spark Arrester Securing Bolt	1
4	Muffler Assembly	1

- 3 Using a wire brush, remove carbon deposits from spark arrester screen. Inspect the screen for excessive wear or damage. If spark arrester is excessively worn or damaged, the spark arrester must be replaced. Cleaning and inspection should be performed after every 60 hours of use.

CAUTION: *Gloves and safety glasses should be worn while cleaning spark arrester.*

- 4 Re-install spark arrester and aluminum ring. Torque the spark arrester securing bolt to 1.0 kg-m (7.3 lb-ft).

NOTE: *It is recommended that a low strength "Loc-tite" is used on the spark arrester securing bolt.*