



ROLAND SANDS DESIGN®

ASSEMBLY INSTRUCTIONS

0048-0835

REVISION A

9/8/11

PAGE 1



CLARITY AIR CLEANER

For Fuel injected models, you must recalibrate the ECM or buy an aftermarket fuelpack from Vance & Hines to properly calibrate your new intake. Failure to do so may result in engine damage.

NOTE: Inserts are required for use with 1993-1999 HD Evolution applications.

To install inserts thread a 3/8-16 bolt through the insert and thread both the bolt and insert completely into the breather hole then remove the 3/8" bolt. Once the inserts are installed you can begin air cleaner installation.

NOTE: Some models may require use of 3/8-16 to 1/2-13 thread reducers (supplied).

1. Turn your motorcycle off. Extinguish all cigarettes and open flames.
2. Remove existing air cleaner and breathers. (Refer to HD owners Manual)
3. Install 2 breathers (9) and backing plate (7) with 2 slotted breather bolts (10) using blue locrite 243, torque to 15 ft. lbs. Install three 1/4-20 bolts (3), torque to 8 ft. lbs.

NOTE: For 08/09 FL models reuse throttle body support bracket as shown in Fig. A

4. Install rubber breather tubes (13/14) as shown in Fig. B. They should fit snugly into the machined recesses
5. Install the secondary plate (8) and ensure that it sits flat and there is no obstruction from the breather tubes below.

6. Install (1,2,5,12,16,17,18) as an assembly with five spacers (11) using five 1/4-20 x 2 1/2 bolts (4) to backing plate (7), torque to 8 ft. lbs.

NOTE: Upon assembly use blue Locrite 243 on the 1/4" fasteners.

NOTE: Make sure the inside of the Lexan window is clean prior to installation. Clean with Plexus if necessary.

7. Go for a ride!

CAUTION:

CLARITY WINDOW IS PERMANENTLY INSTALLED AT THE FACTORY AND SHOULD NOT BE REMOVED OR SERVICED. IF

REMOVAL IS NECESSARY CONTACT THE

TECH DEPARTMENT FOR SPECIAL SERVICE

INSTRUCTIONS. PERFORMANCE MACHINE THE

MANUFACTURER IS NOT RESPONSIBLE FOR

DAMAGE TO THE CLARITY WINDOW CAUSED BY

IMPROPER SERVICE.

USE ONLY LEXAN APPROVED CLEANERS SUCH

AS PLEXUS TO CLEAN YOUR CLARITY WINDOW.

HARSH CHEMICALS MAY CAUSE DAMAGE.

CAUTION !!! - INTENDED FOR OFF HIGHWAY USE ONLY. DOES NOT COMPLY WITH EMISSIONS REGULATIONS

PRODUCT DESCRIPTION

P/N

93-06 Big Twin w/ CV Carb, 02-07 FL w/ Delphi EFI 0206-2059

2001-2012 FXST Softail, 2004-2012 Dyna 0206-2059

2008-2012 FL 0206-2060

1993-2006 Twin Cam w/ S&S E/G Carb 0206-2062



FIG. A

THROTTLE BODY SUPPORT



FIG. B



ROLAND SANDS DESIGN®

ASSEMBLY INSTRUCTIONS

0048-0835

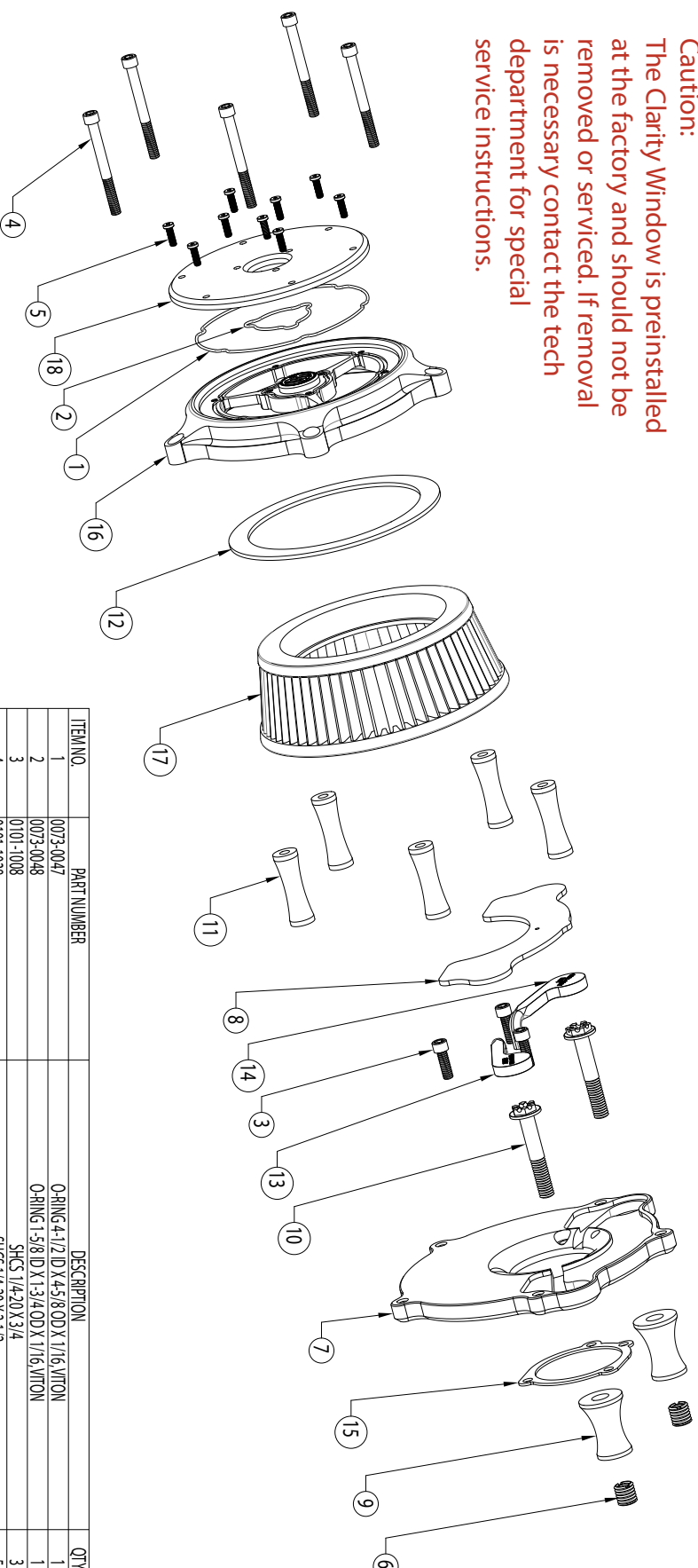
Revision A

9/8/11

PAGE 2

Caution:

The Clarity Window is preinstalled at the factory and should not be removed or serviced. If removal is necessary contact the tech department for special service instructions.



ITEM NO.	PART NUMBER	DESCRIPTION	QTY.
1	0073-0047	O-RING 4-1/2 ID X 4.5/8 OD X 1/16 W/TON	1
2	0073-0048	O-RING 1-5/8 ID X 1-3/4 OD X 1/16 W/TON	1
3	0101-1008	SHCS 1/4-20 X 3/4	3
4	0101-1038	SHCS 1/4-20 X 2-1/2	5
5	0101-9033	SHCS LOW HEAD 8-32 X 1/2	9
6	0116-0007 - ONLY 0206-2059 & 0206-2062	THREADED INSERT 3/8-16 TO 1 7/2-1 3/2 LENGTH	2
7	0206-0002/0010/0013/0030	BACKING PLATE VENTURI AIR CLEANER 93-06 BT 01-07 ST 04-07 DYNA	1
8	0206-0003/0011/0014	SECONDARY PLATE VENTURI AIR CLEANER	1
9	0206-0004/0015/0031	BREATHER STANDOFF VENTURI AIR CLEANER	2
10	0206-0006M/0012M/0016	BREATHER HEX BOLT 3/8-16 X 2-1/4 GRADE 5 CLEAR ZINC	2
11	0206-0008	AIR BOX SPACER VENTURI AIR CLEANER	5
12	0206-0009	FOAM SPACER VENTURI AIR CLEANER	1
13	0206-0018/0020	OIL TUBE - RIGHT	1
14	0206-0019/0021	OIL TUBE - LEFT	1
15	0206-0038/0039/0040	GASKET	1
16	0206-0083	OUTER PLATE RSD CLARITY AIR CLEANER	1
17	0206-0094	AIR FILTER OPEN FRONT, K&N	1
18	0206-0086	COVER WINDOW, RSD CLARITY AIR CLEANER	1