



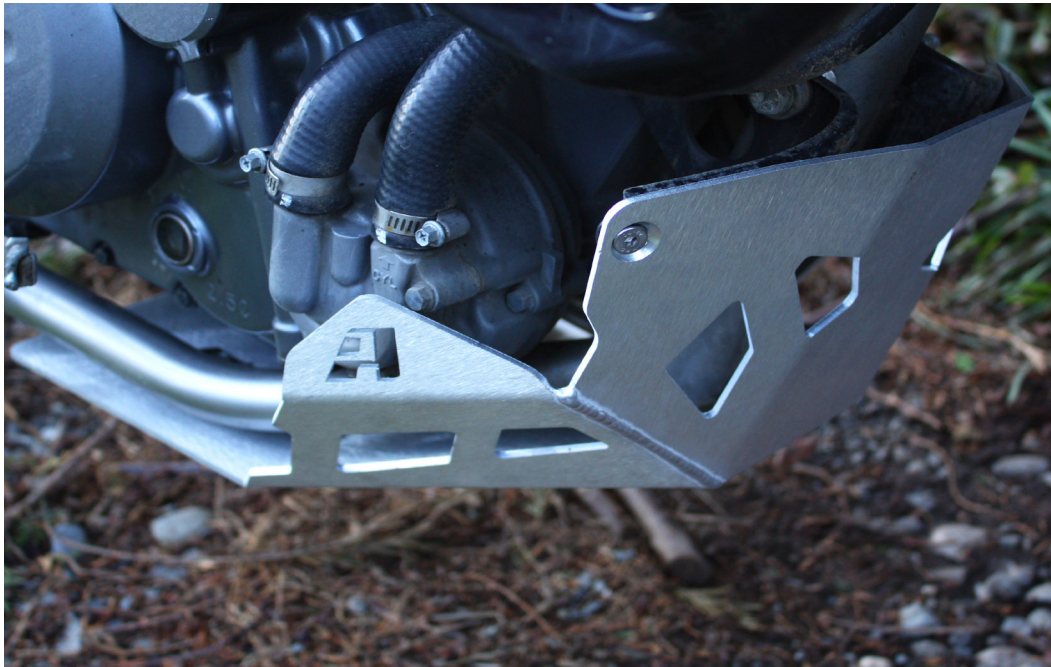
AltRider Skid Plate for Kawasaki KLR650

INSTALLATION INSTRUCTIONS

Dear Rider,
Thank you for choosing AltRider! Whether a seasoned world adventurer or a first time ADV-Newbie, we welcome you to the AltRider experience. You can install your new product with the utmost confidence. AltRider designs, tests, and manufactures all of its products here in the United States. We are proud to do what we do, and honored to present to you the product of our labors.

Enjoy it, show it off, and most of all, RIDE IT!

Venture On,
Jeremy LeBreton



Kawasaki KLR 650 Skid Plate

Package Contents:

- skid plate
- hardware kit
- instructions

AltRider LLC

Global

mailing: 4000 Aurora Ave N Ste 100
Seattle, WA 98103 USA
phone: 206-922-3618
email: info@altrider.com
web: www.altrider.com

Europe

mailing: Oude Middenweg 231-M
2491 AG DEN HAAG
Netherlands
email: info@altrider.eu
web: www.altrider.eu

Rev 0
MADE IN THE USA





KL08-1/2-1201 Kit:

- ① Skid plate
- ② (2) M6 x 1 Nylock nuts
- ③ (2) M6 x 12 OD stainless washers
- ④ (2) M6 x 16mm flat head screws
- ⑤ (2) M6 x 22mm flat head screws
- ⑥ (2) 13mm aluminum spacers
- ⑦ (8) 1.25 diameter rubber split o-rings
- ⑧ (8) thin-wall zip ties

Additional Pieces for Pre-2008 and \ Upgrade Kit:

- ⑨ (2) Stainless steel brackets
- ⑩ (2) M8 x 85mm hex head bolts
- ⑪ (2) M8 flat washers

Tools necessary:

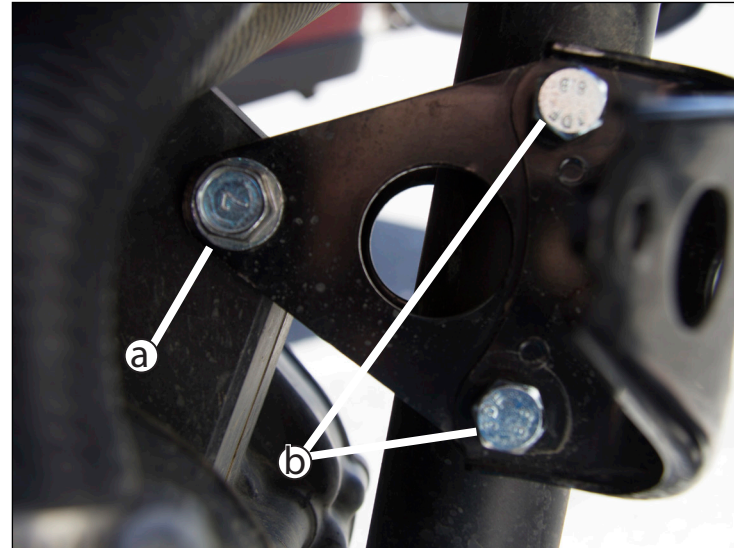
- ① 1/2" drive
- ② 1/2" extension
- ③ 1/4" drive
- ④ 1/4" extension
- ⑤ 12mm wrench
- ⑥ 12mm socket
- ⑦ 13 mm wrench
- ⑧ 13mm socket
- ⑨ 14mm wrench
- ⑩ 14mm socket
- ⑪ M4 allen driver
- ⑫ 10mm wrench or 10mm socket
- ⑬ 1 .5 ml of thread locker



- ① Remove OEM skid plate by removing the (4) 6mm bolts with an 8mm socket. Set these screws aside however you will not need them any longer.



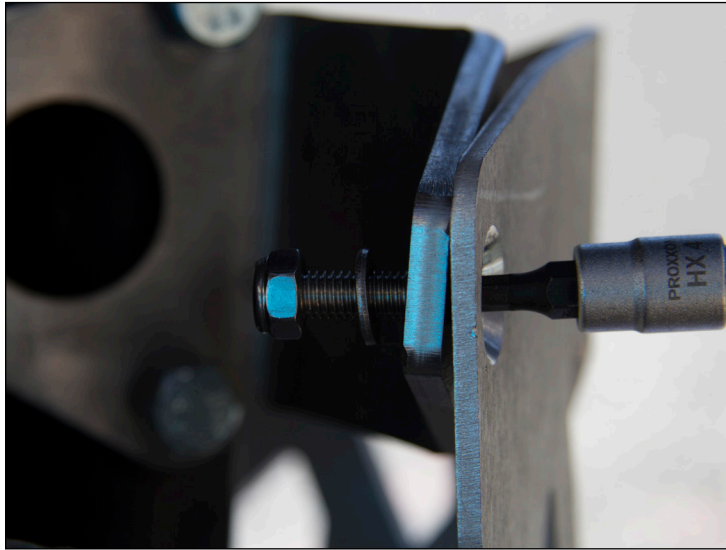
- ③ Pre-2008 and upgrade: Install stainless steel brackets used the OEM M10 engine bolt and nut, and (2) AltRider supplied M8 x 85mm hex head bolts, washers, and nylock nuts. Completely tighten all three of these bolts.



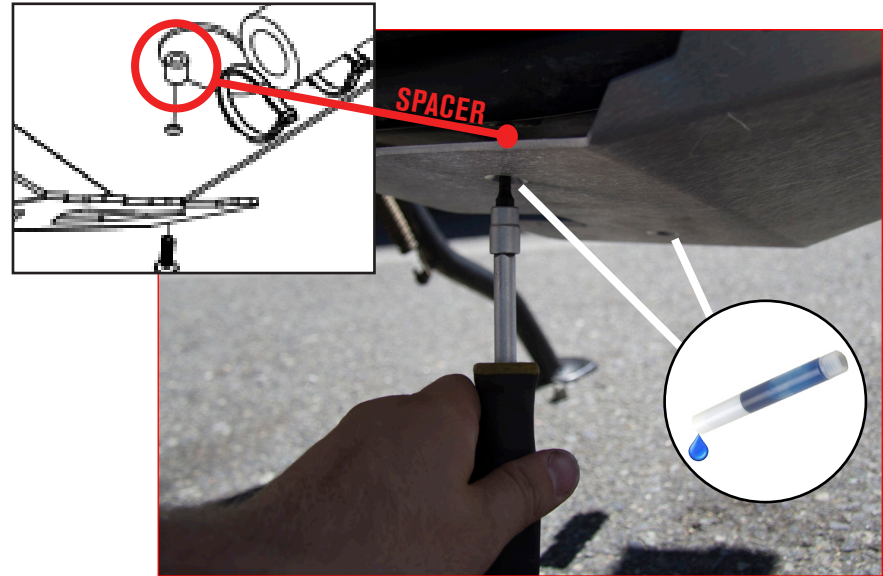
- ② Pre-2008: Remove both (a) and (b) bolts. Remove bolt (a) using a 14mm socket and wrench, save this bolt. Remove bolts (b) using a 13mm socket and 12mm wrench. 2008-Newer: leave oem brackets in place unless you have purchased the KL08-1/2-1200 kit with upgrade brackets.



- ④ All years: add (4) of the rubber split-ring grommets to each side of the frame rails directly under the engine and wrap (1) zip-tie around each grommet with the zip-tie laying inside the slot of the grommet. You can use oil as lube to help set zip-ties into grommets. There should be a total of (8) grommets installed on the bike.



- ⑤ Hold skid plate up to front brackets and start the (2) M6 x 16 flat head screws in the front of the skid plate. Add washers and nylock nuts. Do not tighten all the way.



- ⑥ On the bottom of the skid plate start the (2) M6 x 22 flat head screws. Add the (2) 13mm aluminum spacers and a drop of thread locker to each screw before inserting it into the threaded bosses on frame rail. Now you can tighten all (4) M6 flat head screws.

CONGRATULATIONS!

You've completed your installation. If at any point you have questions about your installation or have any feed back for us, we'd love to hear it. A downloadable version of these instructions can be found at our web site. www.AltRider.com

Global Office:

email: info@AltRider.com
phone: +1 206-922-3618
address: 4000 Aurora Ave N
 Ste 100
 Seattle, WA 98103

Europe Office:

email: info@AltRider.eu
address: Oude Middenweg 231-M
 2491 AG DEN HAAG
 Netherlands

TERMS OF USE, WARRANTY AND LIABILITY WAIVER

AltRider LLC, a Washington company, having its principal place of business in Seattle, WA ("AltRider") offers its motorcycle accessories (the "Product") with the terms, conditions and notices as follows:

Terms of Use

This Product is offered to you conditioned upon your acceptance without modification of the terms, conditions, and notices contained herein. Installation and/or use of this product implies acceptance of all such terms, conditions, and notices. If you do not agree to these terms, do not buy the Product. If you have already bought the Product and do not agree to these terms, return this Product promptly including the packaging and all written materials, to AltRider.

Limitation of Liability and Warranty Disclaimer

You may return your merchandise for a full refund or exchange, less any original or return shipping fees under these conditions:

1. Only if the merchandise is in 100% factory condition. Original manufacturer's packaging and same condition as sold – original boxes, packaging material, instructions, documentation, parts, and attached tags.
2. Only unused, unscratched, uninstalled, undamaged merchandise will be accepted. Do not install equipment until you are sure you want to keep it. Package items carefully in protective materials before returning them. Never ship an item in its original manufacturers packaging – it will arrive damaged. Please use a postal box or other adequate packaging to ensure your return or exchange is not damaged on the way back to AltRider.com.

To read more about our exchanges and returns policy, on the web, navigate to www.alt rider.com/index.php/symfony/exchangesAndReturns

Excepting the warranties stated in the preceding paragraph, AltRider hereby disclaims all other warranties and conditions with regard to the Product including all implied warranties and conditions of merchantability and fitness for a particular purpose. There are no warranties which extend beyond the description on the face hereof. AltRider does not warrant against damages or defects arising out of use or installation of the Product. Installation instructions are provided for your convenience. AltRider is not responsible for any damages arising out of the installation, improper or otherwise, of the Product. No warranty of any kind, expressed or implied, is made regarding the safety of this Product.

To the extent allowed by law, AltRider shall not be held liable for any direct, indirect, punitive, incidental, special or consequential damages arising out of, or connected with, the use or misuse of this Product. Buyer assumes all risks and liability arising from use of this Product.

Entire Agreement

This document states the entire obligation of AltRider with respect to the Product. If any part of this agreement is determined to be void, invalid, unenforceable or illegal, including, but not limited to the warranty disclaimers and liability limitations set forth above, then the remainder of the agreement shall remain in full force and effect.

Applicable Law

This agreement is governed by the laws of Washington, USA. You hereby consent to the exclusive jurisdiction and venue of the courts of Washington, USA, in all disputes arising out of or relating to the use of this product.

