



401 South Grand Ave., Santa Ana, CA 92705
Tel: 714.550.6070 Fax: 714.550.9661 www.twobros.com



2006-07 Suzuki GSX-R600 / 750

V.A.L.E.™ Full Exhaust System with M-2H Canister
Part # 005-1470106V / 005-1470107V / 005-1470108V



Parts List



Qty.	Description	Part Number
1	Suzuki GSX-R600/750 Muffler Canister M-2H	Varies
1	Muffler Clamp	Varies
1	Suzuki GSX-R600/750 "New V.2" S-tube	005-14704SV2
1	Header Kit	005-21301H
1	HARDWARE KIT	005-147-3C
1	X-Lite™ V.A.L.E.™ Retaining Ring	005-7-2-2
1	Servo Stop	005-125-05-01
1	Barrel Clamp	005-27-63MSH
1	Mounting Bracket	005-147-19-3
1	8x40mm Socket Head Cap Screw	005-SH840
1	8x20mm Flange Bolt	005-FB820
2	8mm Flat Washer	005-WF8
2	8mm Lock Nut	005-NN8
1	5mm Long Handle Ball end hex key	005-9-18610
1	Permatex Ultra Black Gasket Maker	031-P22072
4	6x14mm Socket Head Cap Screw	005-SH614
4	M6 Split Lock Washer	005-WL6

IMPORTANT - PLEASE READ CAREFULLY

We recommend that this performance part be installed by a qualified motorcycle technician. If you have any doubts as to your ability to install this performance part, please consult with your local motorcycle dealer. Read all instructions first before starting installation. Make sure the motorcycle and exhaust system are completely cool before starting the installation. Also, make sure the bike is secure on a centerstand or ideally a service lift during installation. Be sure to save all stock components for possible use later.

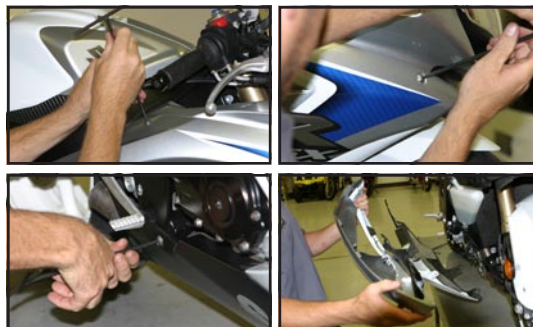
Installation Instructions

1. Make sure the bike is completely cool before starting the installation. Make sure the bike is secure on a centerstand or ideally a service lift.

2. Remove OEM muffler assembly.



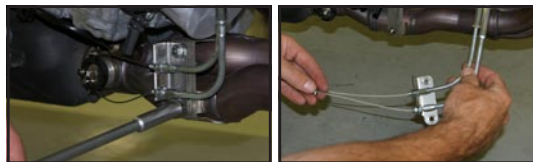
3. Remove left and right fairings.



4. Remove radiator mounting bolts to expose header bolts for easier access.



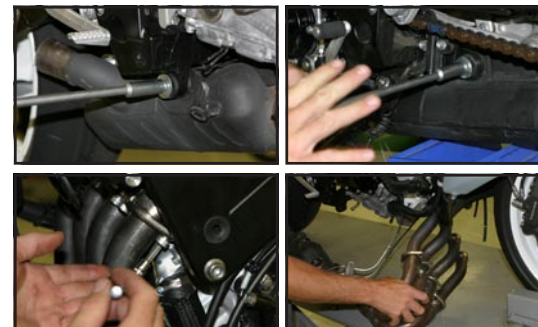
5. Remove OEM servo cables from header assembly.



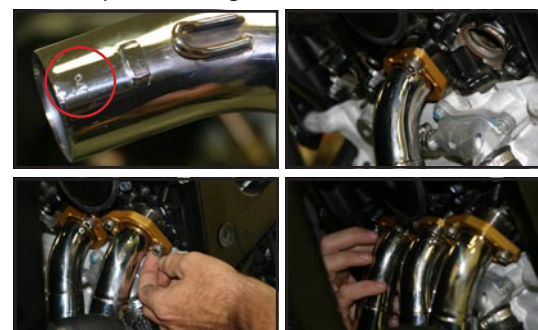
6. Remove O2 Sensor.



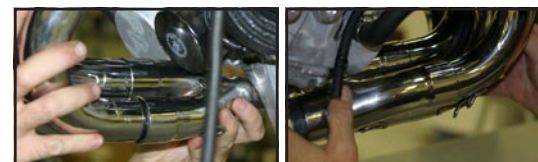
7. Remove OEM headpipe.



8. Install TBR header assembly using the OEM gaskets between cylinder head and head pipe. Loosely install the headers in order 2, 1, 3, 4 where 1 is the very left header if you are sitting on the bike.



9. Install the left and right collector to the headers using a small amount of high temp silicone on the inside of the collector tube.



10. Install the merge collector to the header collectors again using high temp silicone on the inside of the merge collector tube.



(Continued on page 2)



401 South Grand Ave., Santa Ana, CA 92705
Tel: 714.550.6070 Fax: 714.550.9661 www.twobros.com



2006-07 Suzuki
GSX-R600 / 750
V.A.L.E.™ Full Exhaust System with M-2H Canister
Part # 005-1470106V / 005-1470107V / 005-1470108V

(Continued from page 1)

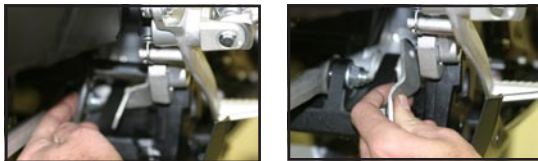
11. Attach the 6 provided spring hooks to the collectors.



12. Remove lower rear set bracket bolt and install new 8x40mm socket head cap screw provided.



13. Use the threaded portion of this bolt sticking out the inside of the bracket to mount the supplied muffler mounting bracket. Use the 8mm nut to secure in the correct location after the muffler is positioned.



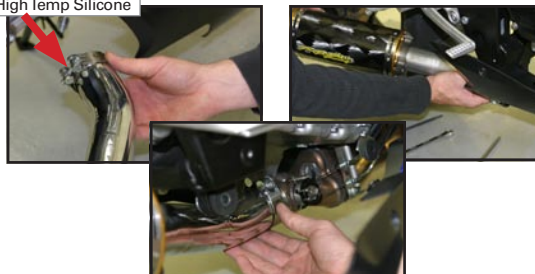
14. Use the 6x14mm Socket Head Cap Screws and split lock washers to loosely join the s-bend to muffler. Do not tighten yet.



V.A.L.E.™ Assembly Detail

15. Slide the barrel clamp over s-bend and join to headpipe. Do not tighten yet. Use High Temp Silicone.

Use High Temp Silicone



16. Slide the rubber lined muffler clamp over the muffler and join the muffler clamp to the muffler bracket. The muffler clamp goes inside of the bracket as shown. Use the supplied bolt and washer.



17. Tighten muffler bracket (muffler will sit at an angle, this is normal).

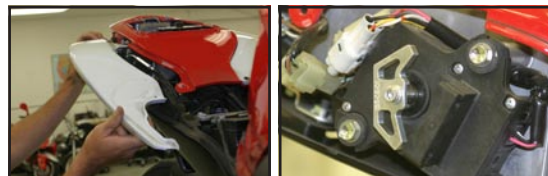
18. Tighten the 4 6x14mm socket head cap screws or V.A.L.E.™ assembly.



19. Tighten barrel clamp.



20. Remove right rear tail section to access exhaust servo. Change servo bracket with TBR servo bracket and install servo block. Remove cable from bike.



Installation Instructions

21. Check for clearance on the frame, linkage, and swingarm.



22. Re-install side panels.

23. Double check your work to ensure everything is tight and properly installed.

24. Before you run the bike, clean off all fingerprints and dirt, as any oily residue will etch the metal and become somewhat permanent when the system gets hot. Run the bike and enjoy. It is normal for some white smoke to appear the first time you start the bike. This is packing/manufacturing oil from inside the pipe burning off. Check for gaps or leaks. If you find a leak, a little high temperature silicon sealant should fix it. After 50 to 100 miles, recheck all fasteners for tightness.

Note: We recommend adding the Juice Box™ Premium Fuel Controller for absolute best performance results.

Care & Cleaning

Care & Cleaning

Keep system free of dirt and moisture. Store in a cool, dry place. Make sure vehicle is completely cool before maintenance.

Stainless Header System: Polished stainless steel pipes will turn a light golden hue after a few heat cycles, this is a normal characteristic of high quality stainless steel. Clean using a mild water based spray cleaner. Always apply cleaner or polish with a soft, clean cloth.

Titanium Header System: Polished titanium pipes will experience color shift ranging from deep blue/purple through amber after a few heat cycles. This is a normal characteristic of high quality titanium. Clean using a mild water based spray cleaner. Always apply cleaner or polish with a soft, clean cloth.

Polished Aluminum Canisters: Use an aluminum or mag wheel polish to restore the bright finish to factory spec.

Brushed Aluminum Canisters: Clean using a mild water based spray cleaner. Always apply cleaner or polish with a soft, clean cloth.

Carbon Fiber Canisters: Clean using a mild water based spray cleaner. Always apply cleaner or polish with a soft, clean cloth. Always make sure the fiberglass packing inside is in good condition and not burned out, as exhaust heat inside an empty canister will deteriorate the carbon fiber sleeve. TBR sells repack kits (Road - #005-10038, Offroad - #005-10038MX) that include everything you need to easily do it yourself.

Titanium Mufflers: For cleaning use a mild water based spray cleaner. Always apply cleaner or polish with a soft, clean cloth. Always make sure the fiberglass packing inside is in good condition and not burned out, as exhaust heat inside an empty canister will deteriorate the carbon fiber sleeve. TBR sells repack kits (Road - #005-10038, Offroad - #005-10038MX) that include everything you need to easily do it yourself.

Repack all road canisters every 3,000 miles. Part #005-10038
Repack all offroad canisters after every 10 hours of use. Part #005-10038MX

NEVER dyno test your bike with carbon fiber or titanium canisters installed - the intense heat and lack of cooling air can quickly burn through the canister material. Two Brothers Racing does not provide a warranty for burned canisters.



401 South Grand Ave., Santa Ana, CA 92705
Tel: 714.550.6070 Fax: 714.550.9661 www.twobros.com

V.A.L.E.
VARIABLE AXIS LOCKING EXHAUST

2006-07 Suzuki GSX-R600 / 750

V.A.L.E.™ Full Exhaust System with M-2H Canister
Part # 005-1470106V / 005-1470107V / 005-1470108V



Parts List



Qty.	Description	Part Number
1	Suzuki GSX-R600/750 Muffler Canister M-2H	Varies
1	Muffler Clamp	Varies
1	Suzuki GSX-R600/750 "New V.2" S-tube	005-14704SV2
1	Header Kit	005-21301H
1	HARDWARE KIT	005-147-3C
1	X-Lite™ V.A.L.E.™ Retaining Ring	005-7-2-2
1	Servo Stop	005-125-05-01
1	Barrel Clamp	005-27-63MSH
1	Mounting Bracket	005-147-19-3
1	8x40mm Socket Head Cap Screw	005-SH840
1	8x20mm Flange Bolt	005-FB820
2	8mm Flat Washer	005-WF8
2	8mm Lock Nut	005-NN8
1	5mm Long Handle Ball end hex key	005-9-18610
1	Permatex Ultra Black Gasket Maker	031-P22072
4	6x14mm Socket Head Cap Screw	005-SH614
4	M6 Split Lock Washer	005-WL6



005-1470106V



005-1470107V



005-1470108V