



# YOSHIMURA

RESEARCH & DEVELOPMENT OF AMERICA, INC.

5420 DANIELS STREET STE A, CHINO CA., 91786 · (800)634-9166 · (909)628-4722 · FACSIMILE (909)591-2198  
[www.yoshimura-rd.com](http://www.yoshimura-rd.com)

## RS-3 OVAL PERFORMANCE EXHAUST SYSTEM

**YAMAHA**

**'94-07**

**YZF600/R**

**YZ60650**

STAINLESS STEEL RACE ONLY SLIP ON



**WARNING**

**CAUTION**

**NOTE**

Please read this manual and follow the instructions

carefully. To emphasize special information, the symbol **⚠** and the words **WARNING**, **CAUTION**, And **NOTE** have special meanings. Pay special attention to the messages highlighted by these signal words.

**NOTE:** Indicates special information to make maintenance easier or instructions clearer.

### **WARNING**

Indicates potential hazard that could result in death or injury.

### **CAUTION**

Indicates potential hazard that could result in vehicle damage.



**THIS PRODUCT IS DESIGNED FOR USE IN CLOSED COURSE RACING AND IS NOT INTENDED FOR HIGHWAY USE.**



NOTE: IN THE STATE OF CALIFORNIA, IT IS ILLEGAL TO MODIFY THE EMISSION CONTROL SYSTEM. WHICH INCLUDES THE CARBURETORS OF ANY VEHICLE.

**CAUTION**

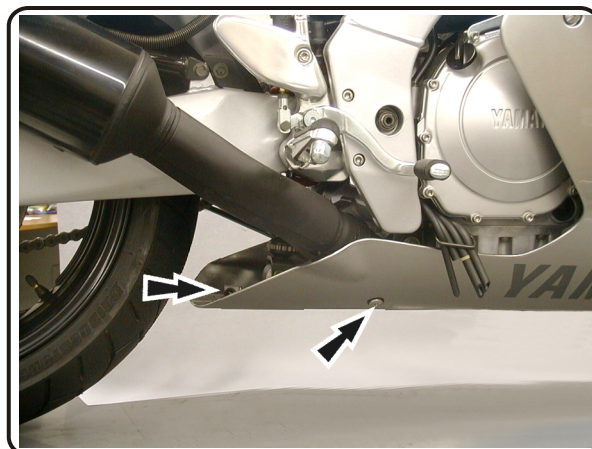
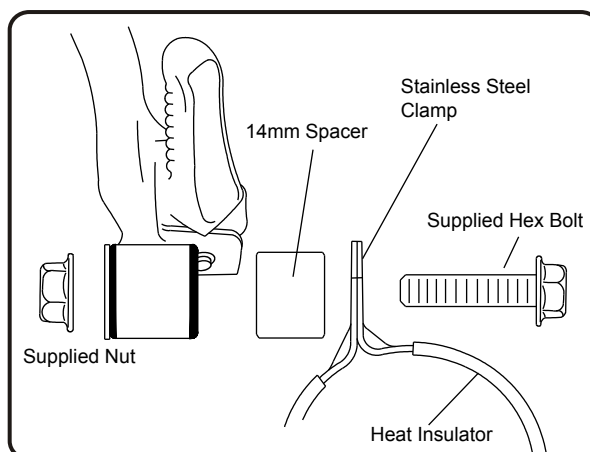
Exhaust system can be extremely hot. Let motorcycle cool down before beginning installation

**Tools Needed:**

11mm (7/16") deep socket  
3/8" ratchet  
12mm & 14mm socket  
13/64" drill bit  
Power drill  
Safety glasses  
Torque wrench

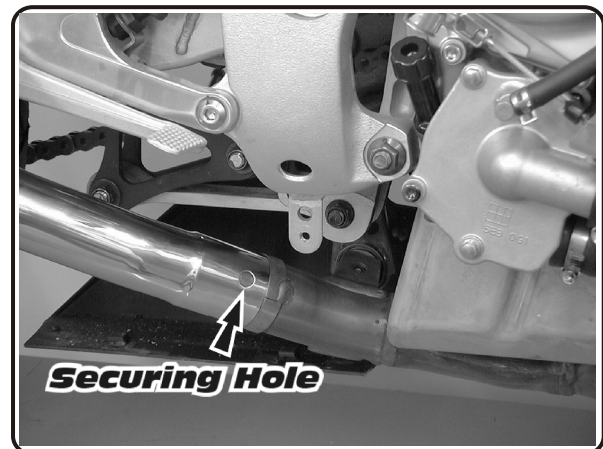
**Installation Steps:**

- 1 Remove 2 lower cowling fasteners. (See Fig. 1)
- 2 Use shop towels to hold lower cowling away from pipe while working. (See Fig. 2)
- 3 Remove stock muffler and tailpipe assembly.
- 4 Slip 2" stainless steel exhaust clamp over Yoshimura tailpipe with muffler and slip onto stock header.
- 5 Apply muffler clamp heat insulator to inside of muffler clamp and slide clamp onto muffler. (Note direction of clamp in Fig. 3)
- 6 Mount clamp to stock muffler bracket using stock bolt, washers and nut. (See Fig. 3) Hand tighten bolt only at this point.
- 7 Standing at the back of the motorcycle, check the orientation of the muffler (the exhaust tip should be pointing down and the muffler should not be canted in either direction)
- 8 Check for clearance between swing arm, rear brake and muffler.
- 9 Torque muffler clamp bolt to 2.5 kg-m (18 lb-ft)

**Fig. 1****Fig. 2****Fig. 3**

- 8 Drill 13/64" hole thru end of header at the center of the securing hole in Yoshimura tailpipe. (See Fig.4) (Caution: Always wear eye protection when using any power tool.)
- 9 Install securing rivet into drilled hole, slide 2" stainless steel exhaust clamp over rivet and tighten clamp to 1.25 kg-m (9 lb-ft.).

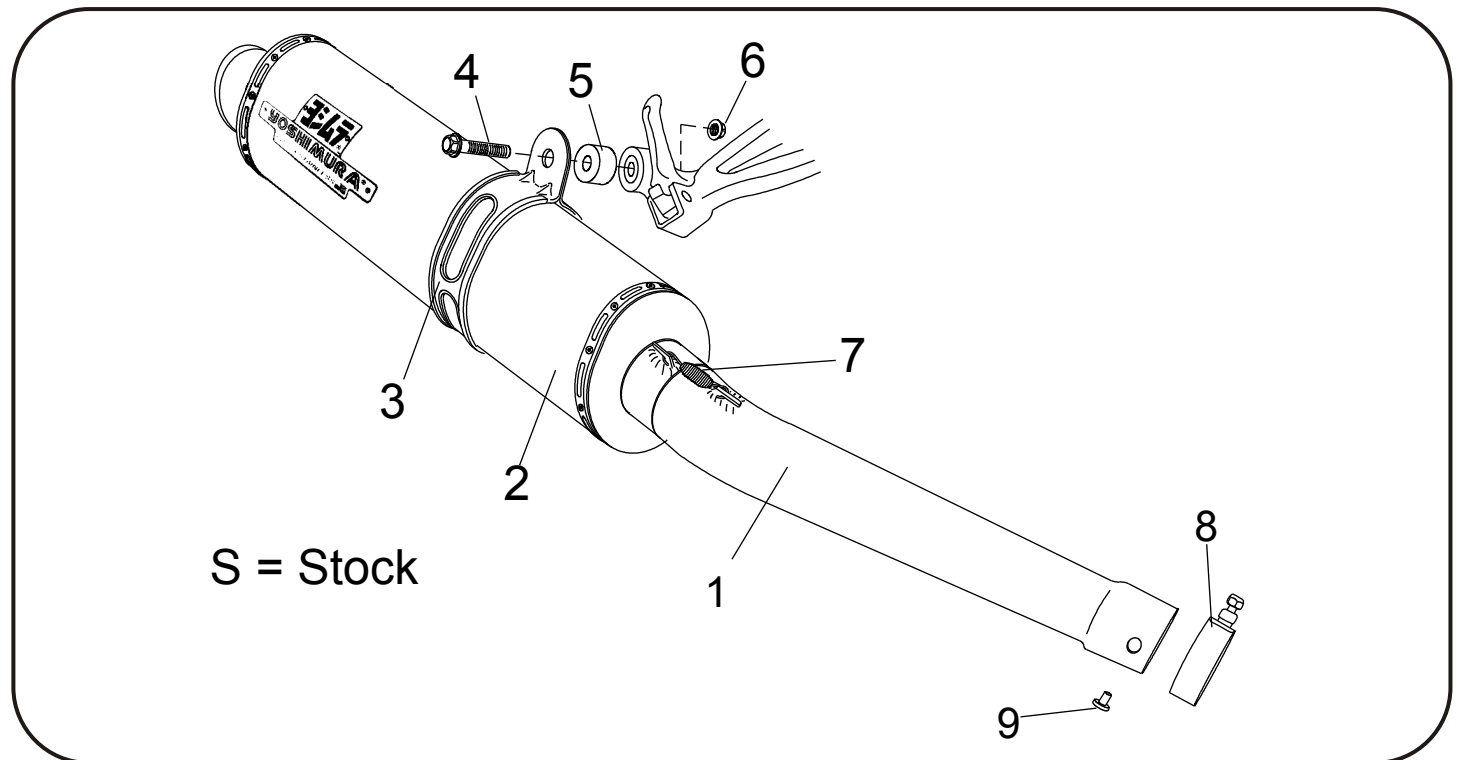
CAUTION
Failure to install securing rivet may allow exhaust to rotate and contact the motorcycle.

**Fig. 4**

- 10 It is recommended that the muffler and tailpipe be wiped down with rubbing alcohol to remove oil and fingerprints. This will help prevent tarnishing of the finish after the exhaust is heated up.
- 11 Check for proper clearance between new exhaust system and swing arm. If any problem is found, please carefully follow through the installation steps again. If problem still persists, please call Yoshimura tech. Dept. at (800)634-9166 / in CA (909) 628-4722
- 12 Remove shop towels and install cowling bolts.
- 13 Check for proper clearance between new exhaust system and cowling.

**Note:** After starting motorcycle, it is normal for new exhaust system and muffler to emit smoke until oil residue burns off.

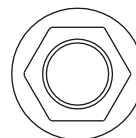
**#YZ606SO**



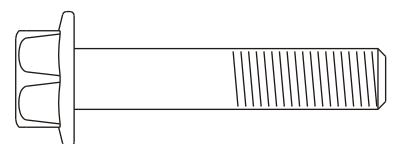
Parts Diagram

	DESCRIPTION	QTY	PART #
1	Stainless Steel Race Only Tailpipe	1	YZ606SOT
2	RS-3 Oval Muffler Assembly	1	**
3	Stainless Steel Muffler Clamp Stainless Steel or Titanium Sleeve uses Carbon Fiber Sleeve uses	1	COS450S8ASX COS450S8AS
4	8mm X40mm Flanged Head Bolt	1	M8X40H
5	14mm Aluminum Spacer	1	8X14SPC
6	8mm Nut	1	8MMNUT
7	2.3" Exhaust Spring	2	RACE-SPS-1
8	2" Stainless Steel Exhaust Clamp	1	20060
9	Securing Rivet	1	S-RIVET
**	Muffler Clamp Heat Insulator	1	HT SHLDTRS
**	Yoshimura Vinyl Sticker	2	17028-BLK

**Nuts and Bolts Guide (Actual Size):**



8mm Flange Nut



8mm x 40mm  
Flange Hex Bolt