



YOSHIMURA

RESEARCH&DEVELOPMENT OF AMERICA, INC.

5420 DANIELS STREET STE A, CHINO CA., 91710 · (800)634-9166 · (909)628-4722 · FACSIMILE (909)591-2198

www.yoshimura-rd.com

YOSHIMURA PERFORMANCE EXHAUST SYSTEM

2008-2010

**SUZUKI
GSX-R600
GSX-R750**

1170086	R55 STAINLESS STEEL FULL SYSTEM WITH STAINLESS STEEL ENDCAP
1170088	R55 STAINLESS STEEL FULL SYSTEM WITH CARBON FIBER ENDCAP



THIS PRODUCT IS DESIGNED FOR USE IN CLOSED COURSE RACING AND IS NOT INTENDED FOR HIGHWAY USE.



NOTE: IN THE STATE OF CALIFORNIA, IT IS ILLEGAL TO MODIFY THE EMISSION CONTROL SYSTEM INCLUDING THE FUEL INJECTION SYSTEM OF ANY VEHICLE.

Caution: Exhaust system can be extremely hot. Let motorcycle cool down before beginning installation. Always wear hand and eye protection and take precautionary measures to avoid injury.

Tools Needed:

Metric socket set
3/8" ratchet and extension
12mm wrench
4mm and 6mm allen wrench
Torque wrench
Small flat head screwdriver

Installation Steps:

- 1 Remove left and right side fairings (see Fig. 1 and Fig. 2).
- 2 Remove stock muffler (see Fig. 3 and Fig. 4).
- 3 Remove stock rear muffler bracket.
- 4 Remove lower radiator support bracket and swing radiator forward to ease removal of stock header.
- 5 Remove stock header and exhaust port gaskets.

NOTE: This Yoshimura full system is designed to be installed without exhaust port gaskets. If exhaust port gaskets are used, there may be insufficient clearance between the header and radiator.

- 6 Install Yoshimura manifolds and flanges into exhaust ports using stock header nuts (see Fig. 5 for flange orientation).
- 7 Torque header nuts to 1.0 kgf-m (7.3 lb-ft).
- 8 Install Yoshimura header from one end of the engine to the other by slipping one tube at a time onto manifolds.



Fig. 2

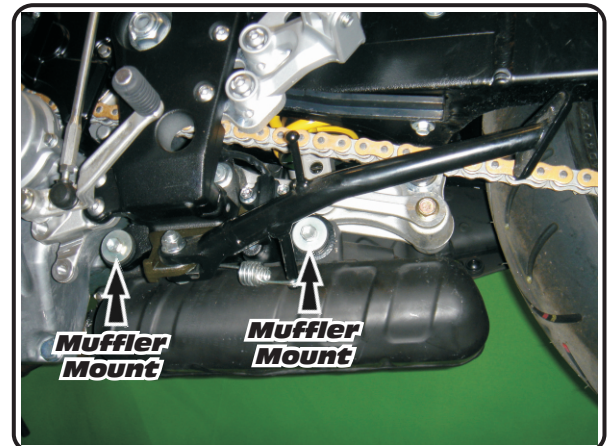


Fig. 3

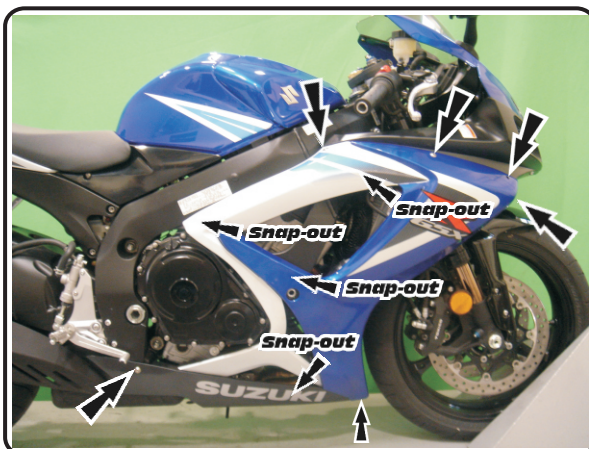


Fig. 1



Fig. 4

- 9 Connect header to flanges using the supplied springs (see Fig. 5 for spring locations).
- 10 Slide Yoshimura oval muffler onto Yoshimura header outlet and connect together using the supplied small exhaust springs (see Parts Diagram on page 6).
- 11 Bolt oval muffler to stock muffler mount location using stock muffler mount bolts, supplied large washer, supplied nuts, rubber grommet, small aluminum spacer, and springs (see Fig. 6 and Parts Diagram on page 6). Do not torque at this time.
- 12 Unbolt stock right rearset from stock right adjustable mounting plate.
- 13 Unhook spring from rear brake light switch.
- 14 Sandwich Yoshimura R55 aluminum muffler bracket between the stock right rearset and stock right adjustable rearset mounting plate using stock bolts (see Fig.7).
- 15 Torque stock right rearset bolts to 2.8 kgf-m (20 lb-ft).
- 16 Reinstall rear brake light switch spring.
- 17 Slide Yoshimura R55 muffler onto Yoshimura tailpipe. Connect R55 muffler to tailpipe using the supplied exhaust springs (see Parts Diagram on page 6).
- 18 Mount R55 muffler to R55 mounting bracket using the supplied bolt, small washer, and spacer nut (see Parts Diagram on page 6). Do not torque at this time.
- 19 Adjust muffler to obtain sufficient clearance with swingarm.

Note: Adjustment of muffler and/or oval muffler may be needed to get proper clearance.
- 20 Torque oval muffler mount bolts to stock specifications.
- 21 Torque muffler mount bolt to 2.3 kgf-m (16.5 lb-ft).
- 22 Reinstall lower radiator bracket and the left and right side fairings.
- 23 It is recommended that the muffler and tailpipe be wiped down with rubbing alcohol to remove oil and fingerprints. This will help prevent tarnishing of the finish after the exhaust is heated up.
- 24 Check for proper clearance between new exhaust system and motorcycle. (i.e. Swing-arm, body work, etc.) If any problem is found, please carefully follow through the installation steps again. If problem still persists, please call Yoshimura technical department at (800)634-9166 / in CA (909)628-4722.

Note: After starting motorcycle, it is normal for new exhaust system and muffler to smoke until oil residue burns off.

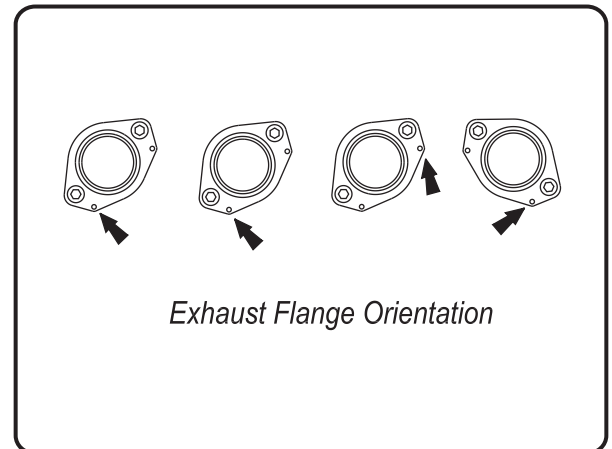


Fig. 5

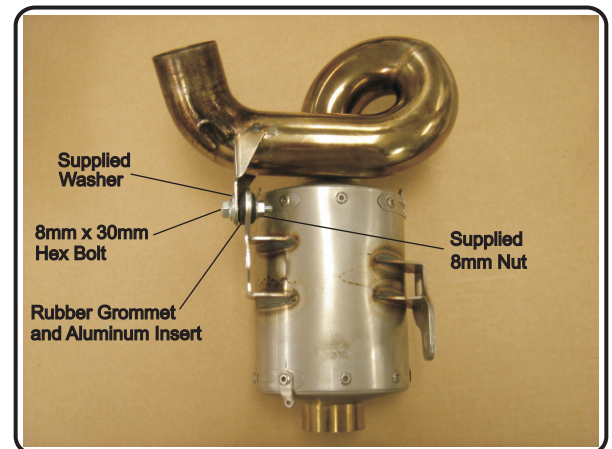


Fig. 6

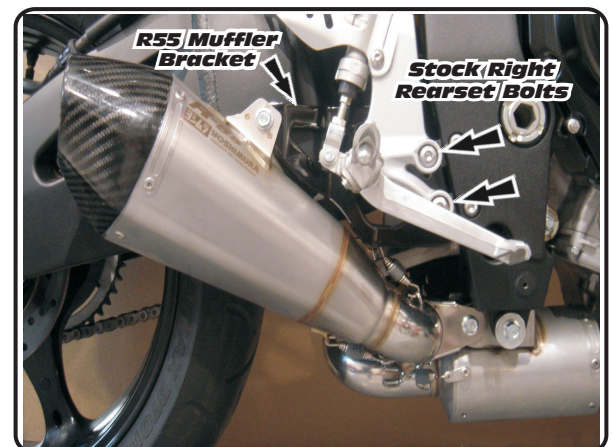
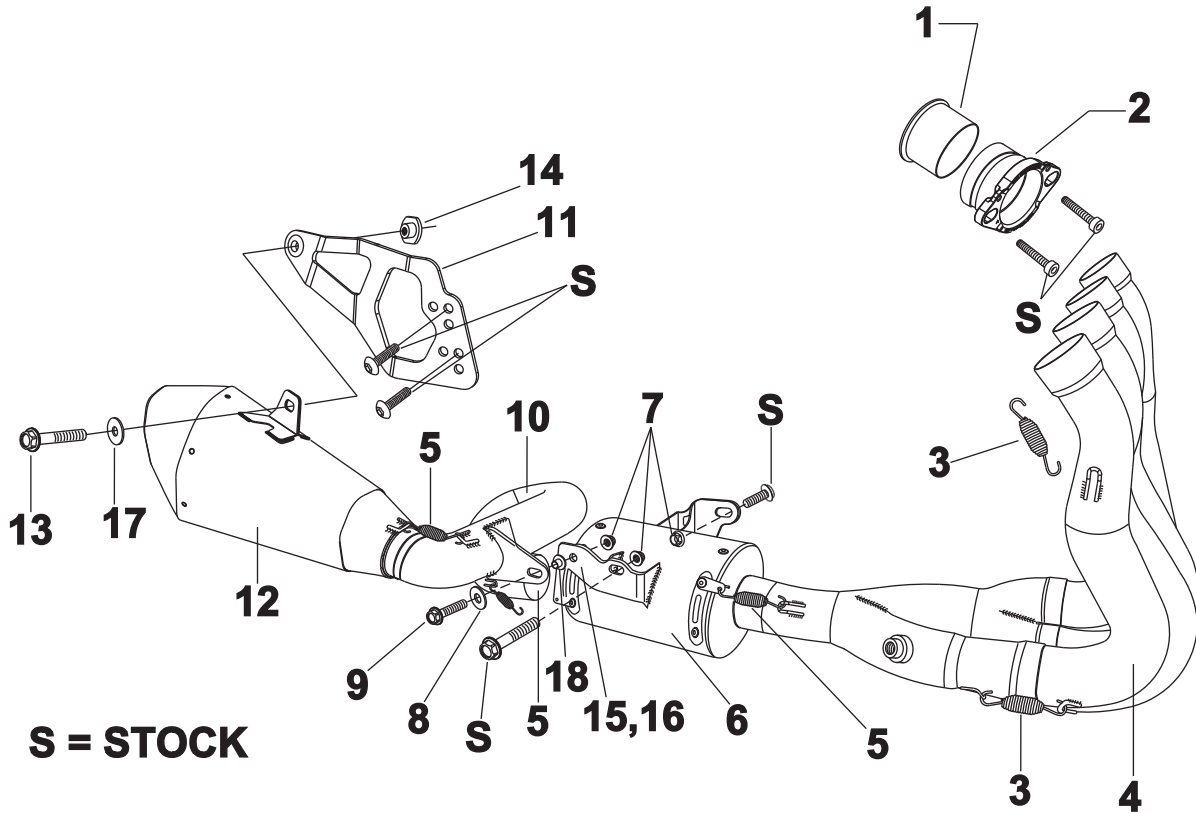


Fig. 7

#1170086 / #1170088



Parts Diagram

NO.	DESCRIPTION	QTY	PART #
1	Yoshimura Manifold	4	1228SMT
2	Yoshimura Flange	4	1170SDY
3	Medium Race Spring	8	RACE-SPS-1
4	Yoshimura Header	1	1170-404
5	Small Race Spring	6	RACE-SPX-1
6	Yoshimura Oval Muffler	1	1104075-CMA
7	Flanged 8mm Nut	2	8MMNUT
8	Large Washer	1	8MMWASHERL
9	8mm x 30mm Hex Head Bolt	1	M8X30H
10	Yoshimura Tailpipe	1	1104-439
11	Yoshimura Aluminum Muffler Mount Bracket	1	1104MBR55-B
12	Yoshimura R55 Muffler with Stainless Steel Endcap with Carbon Fiber Endcap	1	1104286-RMA 1104288-RMA
13	8mm x 20mm Button Head Bolt	1	M8X20BHS
14	Stainless Steel Threaded Spacer Nut	1	SPCR-NUT-B
15	Rubber Grommet	2	Z1022
16	Small Washer	1	8MMWASHER-SS
17	Aluminum Spacer	1	ALS-003
**	Spring Puller Tool	1	ST-200
**	Yoshimura Vinyl Sticker	1	17029