



YOSHIMURA

RESEARCH&DEVELOPMENT OF AMERICA, INC.

5420 DANIELS STREET STE A, CHINO CA., 91710 · (800)634-9166 · (909)628-4722 · FACSIMILE (909)591-2198

www.yoshimura-rd.com

R77 PERFORMANCE DUAL EXHAUST SYSTEM

SUZUKI
2007-2008
GSX-R1000

11170E0220	R77 DUAL SLIP-ON W/ CARBON FIBER SLEEVE; CARBON FIBER ENDCAP
11170E0520	R77 DUAL SLIP-ON W/ STAINLESS STEEL SLEEVE; CARBON FIBER ENDCAP
11170E0550	R77 DUAL SLIP-ON W/ STAINLESS STEEL SLEEVE; STAINLESS STEEL ENDCAP



This product is 50-state legal and complies with Federal and State regulations. Any attempts to modify this product will render it non-compliant with Federal law and void warranty. If modified, the vehicle can no longer be used on public roads and can only be used for off-highway closed course competition. In the state of California, it is illegal to modify the emission control system, which includes the fuel injections system of any vehicle.



NOTE: IN THE STATE OF CALIFORNIA, IT IS ILLEGAL TO MODIFY THE EMISSION CONTROL SYSTEM, WHICH INCLUDES THE FUEL INJECTION OF ANY VEHICLE.

Caution: Exhaust system can be extremely hot. Let motorcycle cool down before beginning installation.

Note: Read through all instructions before beginning installation.

Tools Needed:

10mm, 11mm, and 12mm socket
3/8" ratchet and extension
12mm wrench
Power Drill
13/64" Drill Bit
Torque wrench
Metric Allen Wrench Set

Installation Steps:

- 1 Remove stock right side tailpipe heatshield (see Fig. 1).
- 2 Remove stock rubber stopper from stock right side tailpipe and install on right side Yoshimura tailpipe (see Fig. 2 for stock rubber stopper location).
- 3 Loosen left and right stock collector clamps (see Fig. 2 and 3).
- 4 Unbolt and remove left and right stock mufflers from passenger foot rest mounts. Remove the stock tailpipe exhaust gaskets.

NOTE: The stock exhaust gaskets that were used between the stock underbelly muffler and the stock tailpipes will not be used with the Yoshimura slip-on system. The Yoshimura tailpipes are designed to be installed with no gaskets.

- 5 Slip supplied collector clamps over inlets of Yoshimura tailpipes.
- 6 Install rubber heat insulator to inside of muffler clamps.
- 7 Slide the Yoshimura muffler clamps over the Yoshimura mufflers.
- 8 Slip left and right Yoshimura mufflers and tailpipes onto the stock underbelly muffler.

NOTE: No exhaust gasket is used between the Yoshimura tailpipes and the stock underbelly muffler outlets.

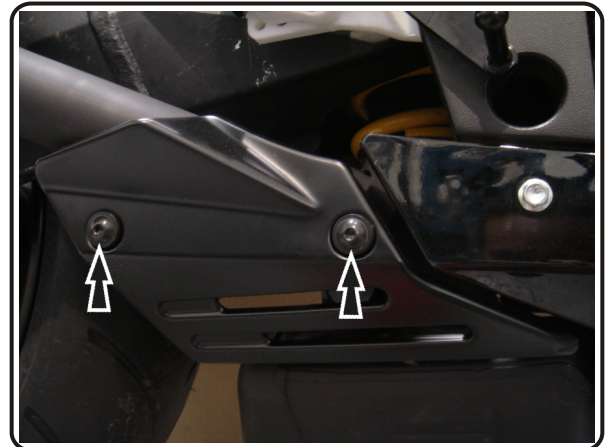


Fig. 1

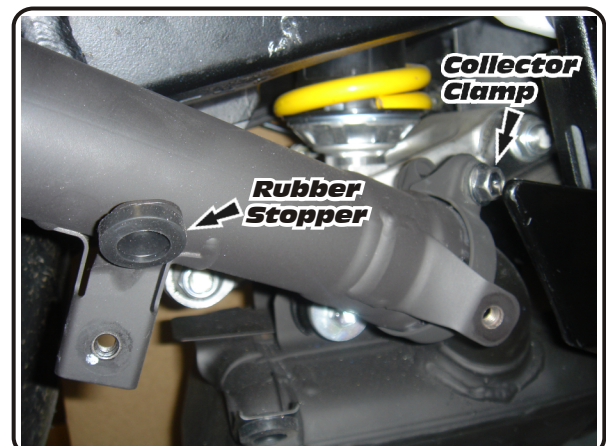


Fig. 2

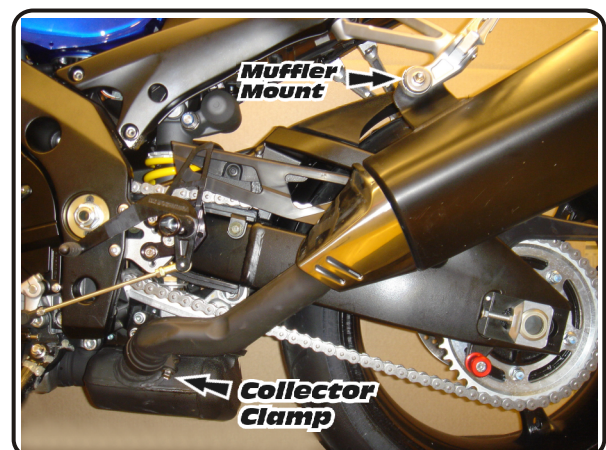


Fig. 3

- 9 Mount Yoshimura muffler clamps to the inside of the stock muffler brackets using stock bolts, washers, and nuts (see Fig. 4 and 5).

NOTE: Hand tighten only at this point.

- 10 Standing at the back of the motorcycle, check for proper alignment of the mufflers. Adjust if necessary.

NOTE: To adjust fitment, it may be necessary to rotate the tailpipe or the muffler independently until proper alignment of the mufflers is achieved.

NOTE: We will be installing a securing rivet in each tailpipe to prevent the tailpipes from rotating while the motorcycle is in operation.

- 11 Drill a 13/64" hole thru the outlets of the stock underbelly muffler, using the securing holes located near the Yoshimura tailpipe inlets as your guides (see Fig. 6).

CAUTION: Always wear eye protection when using any power tools.

- 12 Insert securing rivet into drilled hole, slide supplied stainless steel collector clamp over rivet and torque clamp to 1.25 kg-m (9 lb-ft).
- 13 Torque muffler clamp bolts to 2.5 kg-m (18 lb-ft).
- 14 Torque supplied collector clamps to 1.25 kg-m (9 lb-ft).
- 15 Install stock heatshield onto right Yoshimura tailpipe using the stock hardware and install Yoshimura heatshields onto left and right Yoshimura tailpipes using the supplied hardware (see Parts Diagram on page 4).
- 16 It is recommended that the muffler and tailpipe be wiped down with rubbing alcohol to remove oil and fingerprints. This will help prevent tarnishing of the finish after the exhaust is heated up.
- 17 Check for proper clearance between new exhaust system and motorcycle (i.e. swing-arm, body work, etc.). If any problem is found, please carefully follow through the installation steps again. If problem still persists, please call Yoshimura technical department at (800)634-9166 / in CA (909)628-4722.

NOTE: After starting motorcycle, it is normal for a new exhaust system and muffler to smoke until oil residue burns off.

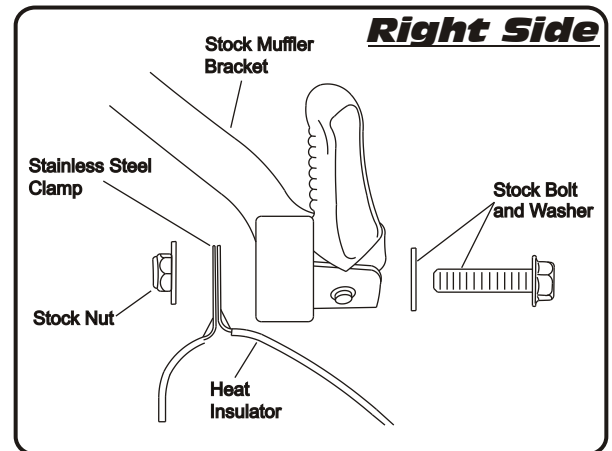


Fig. 4

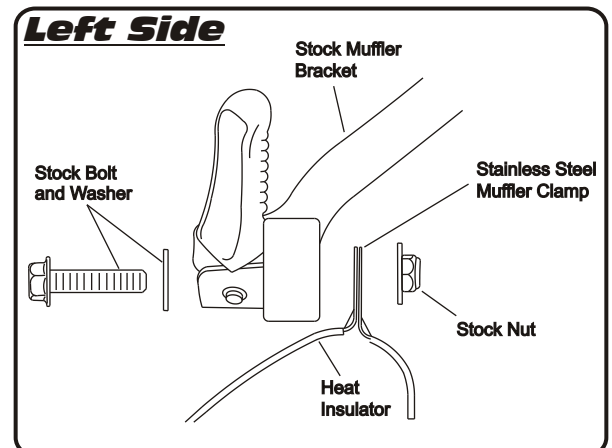
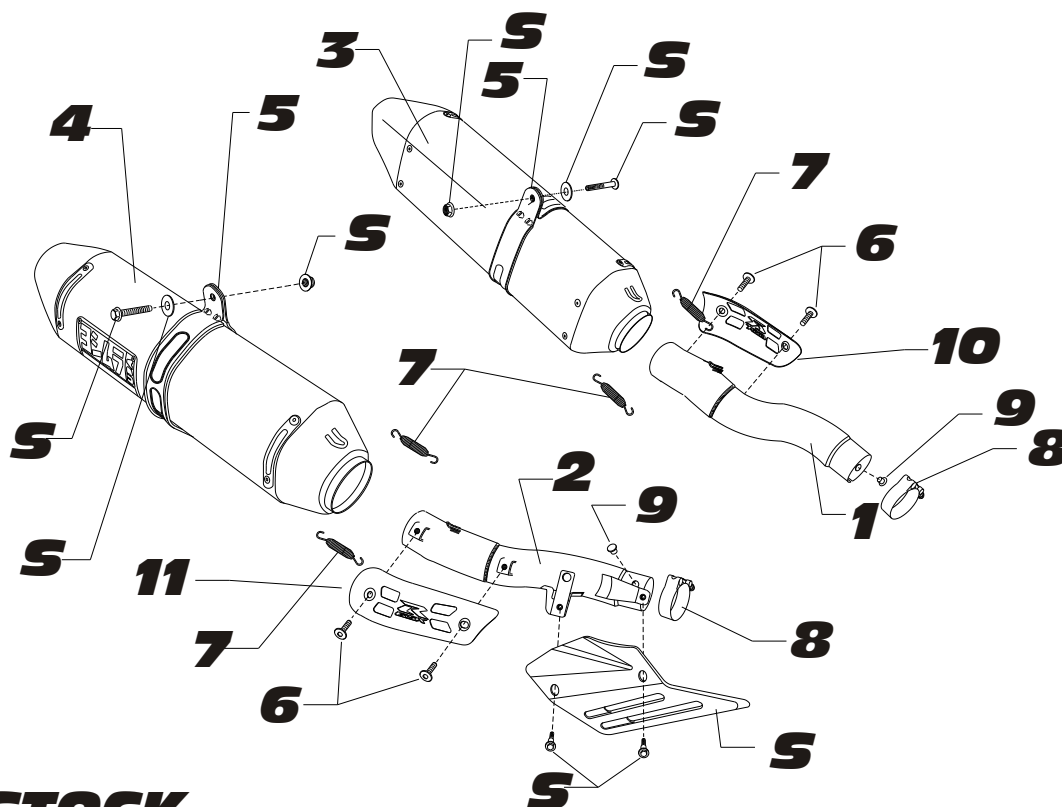


Fig. 5



Fig. 6

#11170E0(220,520,550)

S = STOCK
Parts Diagram

NO.	DESCRIPTION	QTY	PART #
1	Yoshimura Race Slip-On Tailpipe (Left)	1	1117-426
2	Yoshimura Race Slip-On Tailpipe (Right)	1	1117-427
3	R77 Muffler Assembly (Left) with Carbon Fiber Sleeve with Stainless Steel Sleeve with SS Sleeve and SS Endcap	1	N/A
4	R77 Muffler Assembly (Right) with Carbon Fiber Sleeve with Stainless Steel Sleeve with SS Sleeve and SS Endcap	1	N/A
5	R77 Stainless Steel Muffler Clamp Carbon Fiber Sleeve uses Stainless Steel or Titanium Sleeve uses	2	1121-MPCR 1121-MPCR X
6	Heatshield Bolt	4	RC116HSB
7	Medium Exhaust Spring	4	RACE-82MM
8	Exhaust Collector Clamp	2	22059
9	Securing Rivet	2	S-RIVET
10	Yoshimura Heatshield (Left)	1	1117-HSL
11	Yoshimura Heatshield (Right)	1	1117-HSR
**	Heat Insulator for Muffler Clamps	2	HT SHLDR77
**	Yoshimura Vinyl Sticker	1	17029