



401 South Grand Ave., Santa Ana, CA 92705
Tel: 714.550.6070 Fax: 714.550.9661 www.twobros.com



2005-06 Kawasaki ZX636-R/RR

Slip-On Exhaust System with Dual M-2 Exhaust Canisters
Part # 005-1250406G / 005-1250407G / 005-1250408G



Parts List

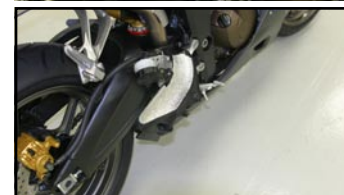
Qty.	Description	Part Number
1	Dual Slip-On Tube	005-12504T
1	M-2 Muffler Canister - Left Side	Varies
1	M-2 Muffler Canister - Right Side	Varies
2	Muffler Canister Clamp	005-2C-6
1	Fuel Injector Light Fix	005-125-05-01
1	HARDWARE KIT	005-125-3
4	X-Ring (half)	005-7-2-3
2	8mm Flange Nut	005-FN8
2	8x40mm Socket Head Cap Screw	005-SH840
8	6x14mm Socket Head Cap Screw	005-SH614
8	Split Lock Washer	005-WL6
1	License Plate Bracket	005-12504B
2	License Plate Lamps	005-8504LT
2	Replacement Turn Signals	005-88T2
1	6" Strand Wire for Left Turn Signal	005-PW218
2	3" Strand Wire for Right Turn Signal / License Plate Lamps	005-PW218
6	Butt Splice Wire Connectors	005-BS1614
6	In-Line Wire Locks (Scotch Locks)	005-BS
4	Zip Ties	005-ZT458B
4	Adhesive Zip Tie Tabs	005-ZTM4
1	Permatex Hi-Temp Sealant	031-P22072
1	5mm Long Handle Ball End Hex Key	005-9-18610

IMPORTANT - PLEASE READ CAREFULLY

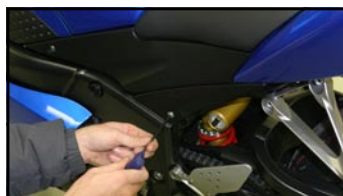
We recommend that this performance part be installed by a qualified motorcycle technician. If you have any doubts as to your ability to install this performance part, please consult with your local motorcycle dealer. Read all instructions first before starting installation. Make sure the motorcycle and exhaust system are completely cool before starting the installation. Also, make sure the bike is secure on a centerstand or ideally a service lift during installation. Be sure to save all stock components for possible use later.

Installation Instructions

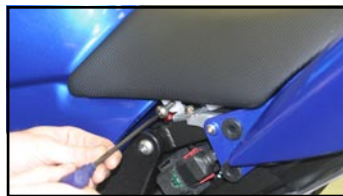
1. Make sure the bike is completely cool before starting the installation. Make sure the bike is secure on a centerstand or ideally a service lift.
2. Expect this installation to take approximately an hour and a half. Also, portions of this installation are best carried out with an assistant.
3. Depending on your bike's configuration, remove either the passenger seat or rear cowl.
7. Remove exhaust pipe heat shield cover and move it aside leaving it connected to the brake fluid reservoir.



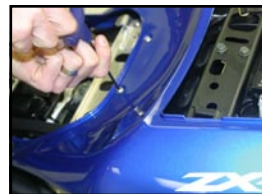
4. Remove 4mm hex head cap screws from side panels (both sides).
8. Remove turn signal bolts and disconnect wiring. Mark turn signal and plate light wiring for later identification. Set both passenger seat brackets aside for later use.



5. Remove seat bolts and seat assembly.



6. Remove rear cowl bolts and push-pins (push center in and pull out).



9. Remove upper plastic heat shield cover. Remove rear seat mounting bracket and set aside for later re-use.



10. Remove seat base bracket.





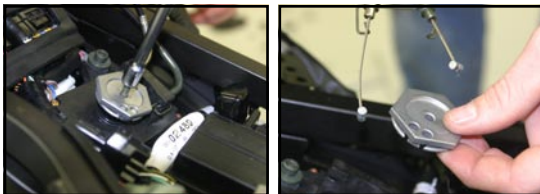
401 South Grand Ave., Santa Ana, CA 92705
Tel: 714.550.6070 Fax: 714.550.9661 www.twobros.com



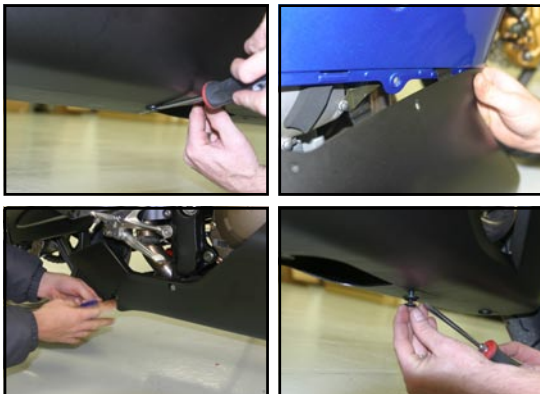
2005-06 Kawasaki ZX636-R/RR

Slip-On Exhaust System with Dual M-2 Exhaust Canisters
Part # 005-1250406G / 005-1250407G / 005-1250408G

11. Remove exhaust valve servo and disconnect cables.



12. Remove right side lower cowl.



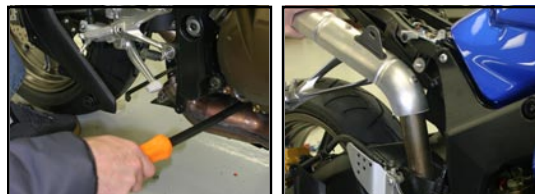
13. Loosen the upper T-bolt clamp that connects the muffler to the riser tube.



14. Remove muffler assembly.



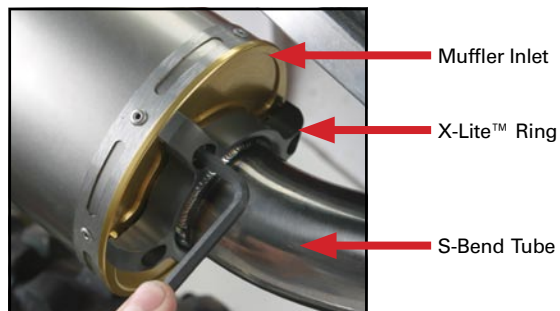
15. Remove junction tube - push lower collector assembly down while pulling junction tube out. **Note: Assistance may be required for this step**



16. You will use lower collector gasket.



17. Use the 6x14mm socket head cap screws and lock washers to loosely attach the V.A.L.E. muffler canisters to the tube assembly.



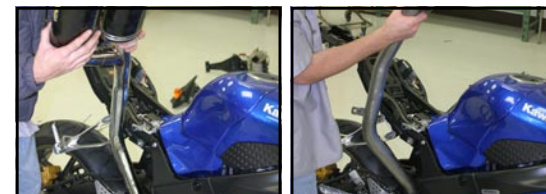
V.A.L.E.™ Assembly Detail

18. Place a bead of silicone sealant around new junction tube.



Installation Instructions

19. Rotate muffler assembly into position making sure junction tube seats firmly into collector.



20. Slip new junction tube into collector.



21. Slip the riser tube's mounting tab onto the mounting bolt and loosely attach the OEM nut.



22. Slide a muffler clamp over each canister and attach to frame using provided 8mm nuts and 8mm x 40mm bolts. Leave loose for now.





401 South Grand Ave., Santa Ana, CA 92705
Tel: 714.550.6070 Fax: 714.550.9661 www.twobros.com



2005-06 Kawasaki ZX636-R/RR

Slip-On Exhaust System with Dual M-2 Exhaust Canisters
Part # 005-1250406G / 005-1250407G / 005-1250408G

23. Attach license plate bracket and passenger seat mounting bracket using existing bolts. Tighten securely.



24. Making sure canisters are properly oriented and straight, tighten the 8 6x14mm socket head cap screws with the supplied ball-end allen wrench to lock the V.A.L.E. assembly in place.



25. Tighten lower T-bolt clamp securing junction tube to collector.

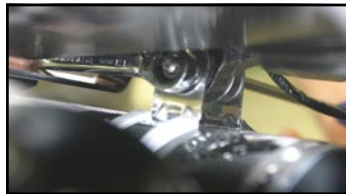


Installation Instructions

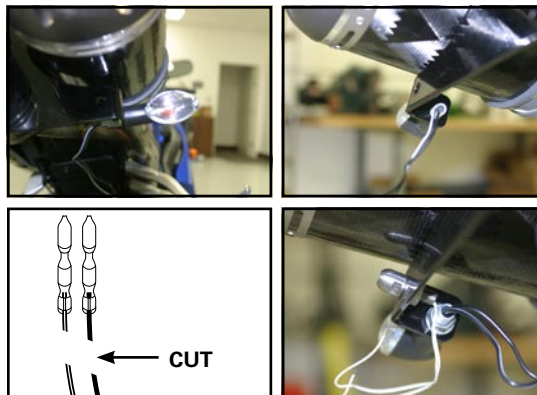
26. Tighten nut securing mounting tab on the riser tube to the frame.



27. Securely tighten the bolts holding the rubber-lined canister clamps for both canisters.

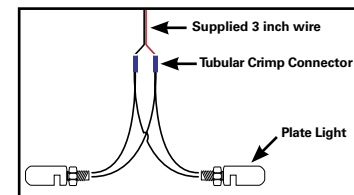
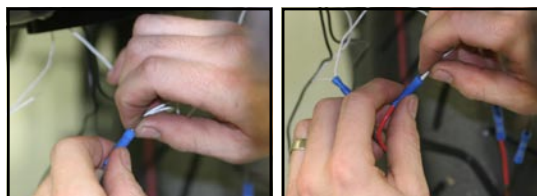


28. Attach left and right turn signals and plate lights to license plate mounting frame as shown. Cut off metal connectors from ends of turn signals and discard. Strip away 1/4 inch of insulation from each wire.



29. **Plate light wiring:**

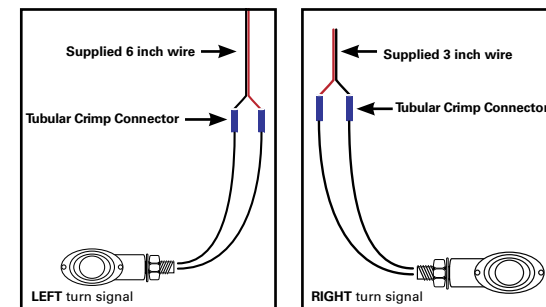
Strip 1/4 inch of insulation from the end of one of the supplied 3 inch wires leaving 2 exposed ends. Take one wire from each plate light and twist the ends together. Repeat for the other two plate light wires. Insert one twisted pair of wires into one end of a tubular crimp connector and the stripped end of the black wire into the other end of the connector. Crimp with a crimping tool to secure. Repeat with the other twisted pair from the plate lights and the red wire.



(Continued from step 30)

30. **Turn signal wiring:**

Strip 1/4 inch of insulation from the end of the supplied 6 inch wire leaving 2 exposed ends. Attach LEFT turn signal to 6 inch supplied wire as shown and crimp with a crimping tool to secure. Repeat with RIGHT turn signal.



31. Route plate light and turn signal wiring behind license plate mounting bracket

32. Attach one scotch lock to the bike's left side turn signal wire by running one wire through the open side of the lock just below the existing modular connector. Attach another scotch lock to the other wire, just below the existing modular connector. Slide one end of one wire in the existing 6 inch assembly into the scotch lock's other opening - the one which dead-ends. It doesn't matter which one of the wires you use - color doesn't matter.





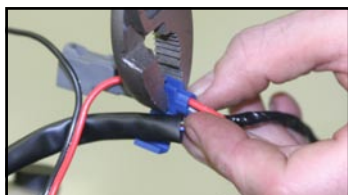
401 South Grand Ave., Santa Ana, CA 92705
Tel: 714.550.6070 Fax: 714.550.9661 www.twobros.com



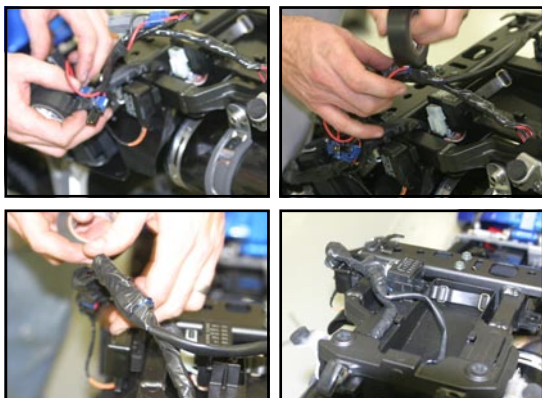
2005-06 Kawasaki ZX636-R/RR

Slip-On Exhaust System with Dual M-2 Exhaust Canisters
Part # 005-1250406G / 005-1250407G / 005-1250408G

33. With a pair of pliers, squeeze the metal tab of the scotch lock to lock the wiring in place and complete the connection. Flip the plastic "L" tab over and snap it in place to lock the unit. Repeat these steps for the RIGHT turn signal and also for the plate lights.



34. Securely wrap new wiring in electrical tape

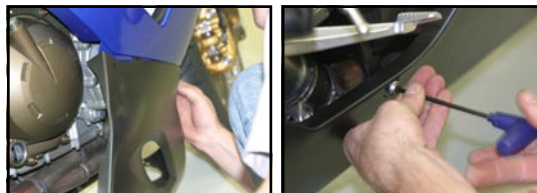


35. Use adhesive zip-tie tabs and zip-ties to secure newly installed wiring behind license plate bracket and away from muffler canisters and exhaust tubes.

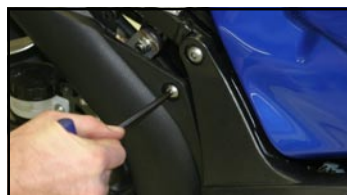


Installation Instructions

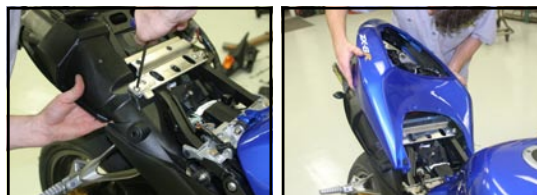
36. Reinstall heat shield cover and lower cowl.



37. Reinstall heat shield base plate and plastic heat shield.



38. Reinstall seat bracket, and rear cowl or seat.



39. Carefully double check your work to insure that all hardware is securely fastened and all wiring is away from contact with exhaust canisters and tubing.

40. Before you run the bike, clean off all fingerprints and dirt, as any oily residue will etch the metal and become somewhat permanent when the system gets hot. Run the bike and enjoy. It is normal for some white smoke to appear the first time you start the bike. This is packing/manufacturing oil from inside the pipe burning off. After 50 to 100 miles, recheck all fasteners for tightness.



Care & Cleaning / Warranty

Care & Cleaning

Keep system free of dirt and moisture. Store in a cool, dry place. For cleaning use a mild spray cleaner. Always apply cleaner or polish with a soft, clean cloth.

Stainless Header System: Polished stainless steel pipes will turn a light golden hue after a few heat cycles, this is a normal characteristic of high quality stainless steel.

Carbon Fiber Mufflers: Always make sure the fiberglass packing inside is in good condition and not burned out, as exhaust heat inside an empty canister will deteriorate the Carbon Fiber sleeve. TBR sells repack kits (TBR part # 005-10038) that include new rivets and repack material as well as a drill bit (#30), making it easy to do yourself. Also, NEVER dyno test your bike with carbon fiber mufflers installed - the intense heat and lack of cooling air can quickly cause the CF material to burn. Two Brothers Racing does not provide a warranty for burned carbon fiber.

Aluminum Mufflers: Use an aluminum or mag wheel polish such as Mother's to restore the bright finish to factory spec.

Two Brothers Racing products are intended for closed course competition purposes only, and therefore are sold "as is" without warranty. Two Brothers Racing specifically disclaims any warranties of merchantability or fitness for a particular purpose and disclaims all responsibility for consequential and incidental damages or any other losses arising from the use of these products or parts.



401 South Grand Ave., Santa Ana, CA 92705
Tel: 714.550.6070 Fax: 714.550.9661 www.twobros.com



2005-06 Kawasaki ZX636-R/RR

Slip-On Exhaust System with Dual M-2 Exhaust Canisters
Part # 005-1250406G / 005-1250407G / 005-1250408G



005-1250406G



Qty.	Description	Part Number
1	Dual Slip-On Tube	005-12504T
1	M-2 Muffler Canister - Left Side	005-125-206GL
1	M-2 Muffler Canister - Right Side	005-125-206GR
2	Muffler Canister Clamp	005-2C-6
1	Fuel Injector Light Fix	005-125-05-01
1	HARDWARE KIT	005-125-3
4	X-Ring (half)	005-7-2-3
2	8mm Flange Nut	005-FN8
2	8x40mm Socket Head Cap Screw	005-SH840
8	6x14mm Socket Head Cap Screw	005-SH614
8	Split Lock Washer	005-VL6
1	License Plate Bracket	005-12504B
2	License Plate Lamps	005-8504LT
2	Replacement Turn Signals	005-88T2
1	6" Strand Wire for Left Turn Signal	005-PW218
2	3" Strand Wire for Right Turn Signal / Lamp	005-PW218
6	Butt Splice Wire Connectors	005-BS1614
6	In-Line Wire Locks (Scotch Locks)	005-BS
4	Zip Ties	005-ZT458B
4	Adhesive Zip Tie Tabs	005-ZTM4
1	Permatex Hi-Temp Sealant	031-P22072
1	5mm Long Handle Ball End Hex Key	005-9-18610

005-1250407G



Qty.	Description	Part Number
1	Dual Slip-On Tube	005-12504T
1	M-2 Muffler Canister - Left Side	005-125-207GL
1	M-2 Muffler Canister - Right Side	005-125-207GR
2	Muffler Canister Clamp	005-2C-6
1	Fuel Injector Light Fix	005-125-05-01
1	HARDWARE KIT	005-125-3
4	X-Ring (half)	005-7-2-3
2	8mm Flange Nut	005-FN8
2	8x40mm Socket Head Cap Screw	005-SH840
8	6x14mm Socket Head Cap Screw	005-SH614
8	Split Lock Washer	005-VL6
1	License Plate Bracket	005-12504B
2	License Plate Lamps	005-8504LT
2	Replacement Turn Signals	005-88T2
1	6" Strand Wire for Left Turn Signal	005-PW218
2	3" Strand Wire for Right Turn Signal / Lamp	005-PW218
6	Butt Splice Wire Connectors	005-BS1614
6	In-Line Wire Locks (Scotch Locks)	005-BS
4	Zip Ties	005-ZT458B
4	Adhesive Zip Tie Tabs	005-ZTM4
1	Permatex Hi-Temp Sealant	031-P22072
1	5mm Long Handle Ball End Hex Key	005-9-18610

005-1250408G



Qty.	Description	Part Number
1	Dual Slip-On Tube	005-12504T
1	M-2 Muffler Canister - Left Side	005-125-208GL
1	M-2 Muffler Canister - Right Side	005-125-208GR
2	Muffler Canister Clamp	005-2C-6
1	Fuel Injector Light Fix	005-125-05-01
1	HARDWARE KIT	005-125-3
4	X-Ring (half)	005-7-2-3
2	8mm Flange Nut	005-FN8
2	8x40mm Socket Head Cap Screw	005-SH840
8	6x14mm Socket Head Cap Screw	005-SH614
8	Split Lock Washer	005-VL6
1	License Plate Bracket	005-12504B
2	License Plate Lamps	005-8504LT
2	Replacement Turn Signals	005-88T2
1	6" Strand Wire for Left Turn Signal	005-PW218
2	3" Strand Wire for Right Turn Signal / Lamp	005-PW218
6	Butt Splice Wire Connectors	005-BS1614
6	In-Line Wire Locks (Scotch Locks)	005-BS
4	Zip Ties	005-ZT458B
4	Adhesive Zip Tie Tabs	005-ZTM4
1	Permatex Hi-Temp Sealant	031-P22072
1	5mm Long Handle Ball End Hex Key	005-9-18610



401 South Grand Ave., Santa Ana, CA 92705
Tel: 714.550.6070 Fax: 714.550.9661 www.twobros.com

2005 Kawasaki ZX6R/RR Dual V.A.L.E.™ Slip-on Exhaust System Fuel Injector Light Fix



IMPORTANT - PLEASE READ CAREFULLY

We recommend that this performance part be installed by a qualified motorcycle technician. If you have any doubts as to your ability to install this performance part, please consult with your local motorcycle dealer. Read all instructions first before starting installation. Make sure the motorcycle and exhaust system are completely cool before starting the installation. Also, make sure the bike is secure on a centerstand or ideally a service lift during installation. Be sure to save all stock components for possible use later.

Warranty

Two Brothers Racing products are intended for closed course competition purposes only, and therefore are sold "as is" without warranty. Two Brothers Racing specifically disclaims any warranties of merchantability or fitness for a particular purpose and disclaims all responsibility for consequential and incidental damages or any other losses arising from the use of these products or parts.

Parts List

Qty.	Description
1	Billet aluminum cable stay replacement
1	5mm x 10mm socket head cap screw

Installation Instructions

1. Make sure the bike is completely cool before starting the installation. Make sure the bike is secure on a centerstand or ideally a service lift.
2. Remove the seat to expose the hexagonal cable stay (Fig. 1).
3. Remove the retaining screw (a) and cable stay (b) (Fig.2).

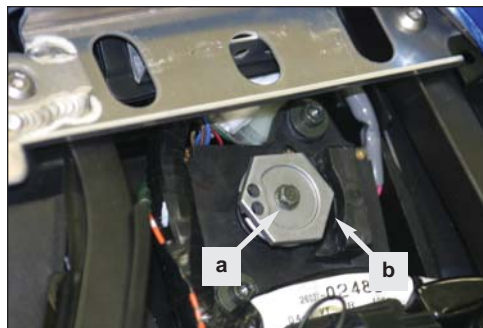


Fig. 1



Fig. 2

4. There is a line inscribed on the top surface of the servo shaft. Make sure that this line is facing away from the stop block. (Fig. 3) If necessary, the shaft can be rotated by momentarily turning the ignition key to engage the electrical system. When the line reaches the correct position, disengage the electrical system.



Fig. 3

4. Orient the new servo cap vertically with the legs facing the left side of the bike and the OEM stop block (Fig. 4). Make sure that the milled area of the servo cap matches the flats of the servo shaft. Using the supplied screw, attach the new servo cap to the servo shaft and tighten securely (Fig. 5).



Fig. 4



Fig. 5

5. Making sure that the area surrounding the new servo cap is unobstructed by tools, body parts, etc., turn the ignition key of the bike to engage the electrical system. Observe that the servo cap rotates to the top of the block (Fig. 6), to the bottom of the block (Fig. 7), then comes to rest. When the engine is running the servo cap will move in response to throttle activity - this is normal.



Fig. 6



Fig. 7

6. Replace seat.