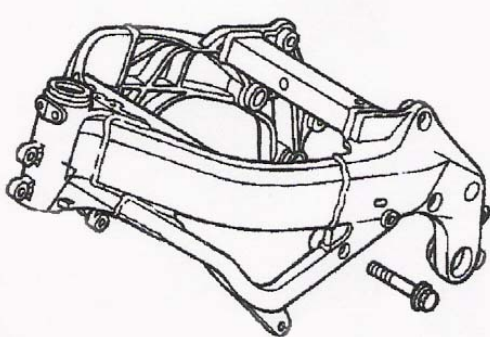
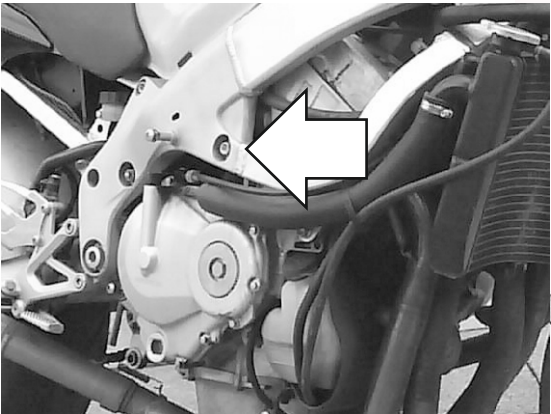


HONDA CBR 600 F4 / F4i

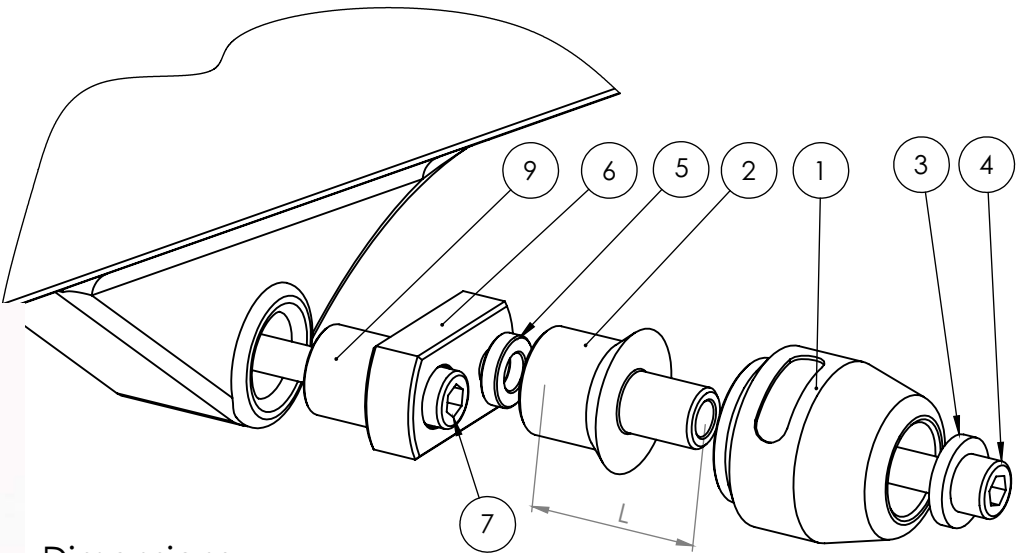
year of production: '99-
product code: SR102



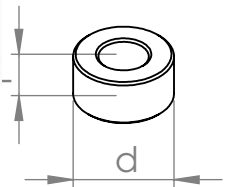
Assembly position
(both sides)

Assembly instructions

- 1. Remove the fairings on both sides.
 - 2. Please check the assembly positions on the image above. Remove the original bolts indicated with the arrow on the image above.
 - 3. Replace the original bolts with the new mounting bolts (parts #7), spacers (parts #9) and metal adapters (parts #6) and put these parts in the right order shown on the assembly scheme on the right page. Put the adapters (parts #6) in the right positions according to the assembly scheme.
 - 4. Mark the positions of the holes on the fairings. The correct positions are opposite to the threaded holes in the adapters (parts #6).
 - 5. Drill the holes in the fairings. We suggest to drill small holes first (eg. 0,20" in diameter). Then check if the holes are in correct positions by putting the fairings on. If the positions of the holes are correct, drill the final holes. Final holes should be ca. 1,3" in diameter.
 - 6. Please assemble the fairings.
 - 7. Assemble the sliders, round cylindrical body, the bolts, steel sleeve and the spacers (parts #1, #2, #3 and #4) according to the drawing on the right page. Put them into the threaded holes in the adapter (part #6).
- We suggest to use the threadlocker (eg. Loctite) to make sure that the vibrations of the engine do not loosen the bolts.



Dimensions
of the spacers



Assembly scheme (both sides)

Part #	Part name	Left side (as You sit on the motorbike)	Right side
1	Slider	1 pcs.	1 pcs.
2	Round cylindrical body	50 mm	45 mm
3	Steel M10 sleeve	1 pcs.	1 pcs.
4	Allen bolt (8,8 class)	M10x70 mm	M10x60 mm
5	Spacer	-	-
6	Adapter	Steel	Aluminium
7	Mounting bolt 1	M10x1,25x80 (Allen)	M10x1,25x100 (Hex)
8	Mounting bolt 2	-	-
9	Spacer 1	t=20mm, d=20 mm	T=20mm, d=20 mm
10	Spacer 2	-	-
11	Nut	-	-
12	Washer	-	M10, 1 pcs. to be put on M10x1,25x100 Hex bolt

This product is a professional accessory to be used on the race track. Manufacturer and Seller take no responsibility for any damages occurred despite of using protective accessories. For more information go to vortexracing.com